

Appendix K - East Dorset Locality Overview

The East Dorset locality is largely rural with a higher proportion of older people compared to the rest of Dorset and almost double the national average. The locality is the least deprived in Dorset. Housing growth will be concentrated in Ferndown and Colehill, providing these developments are completed. An analysis of health and the wider determinants of health highlights poor outcomes for self-reported limiting long term illness, incidences of breast cancer and prostate cancer and elective hospital admissions for hip replacements.

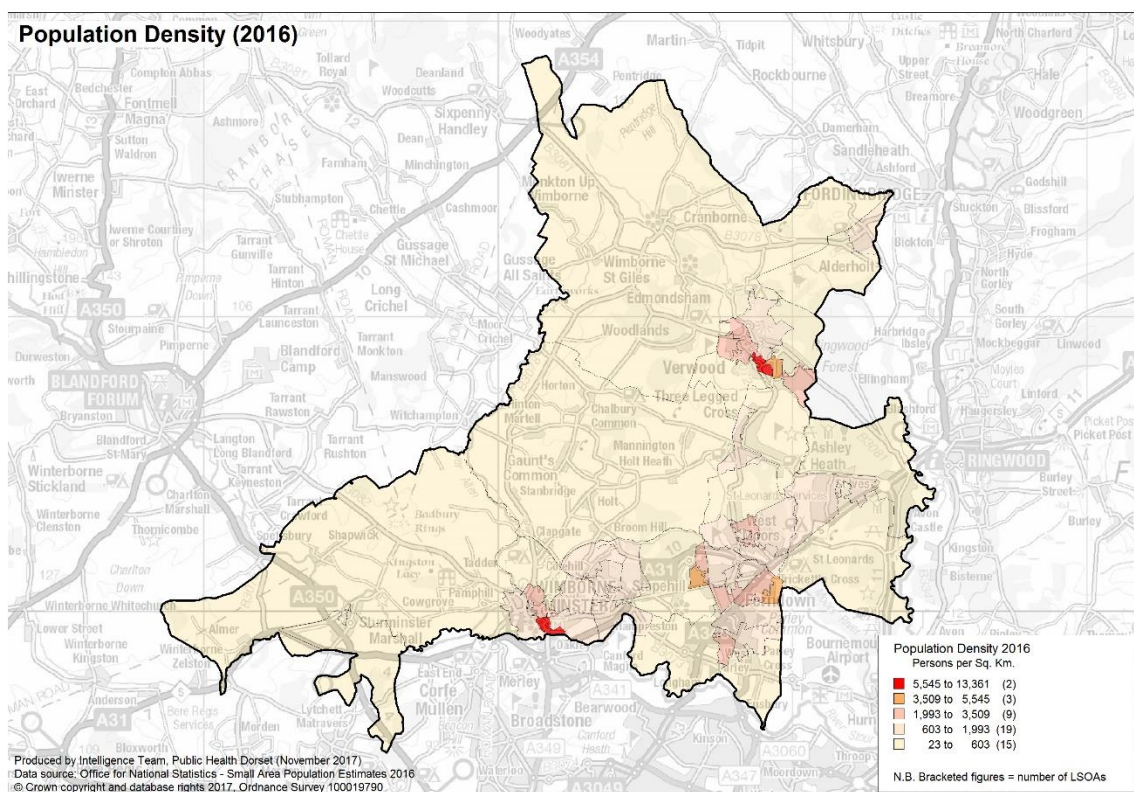
The following headings have been used to describe the locality in more detail:

- Demographics
- Housing
- Health and Wider Determinants

Demographics

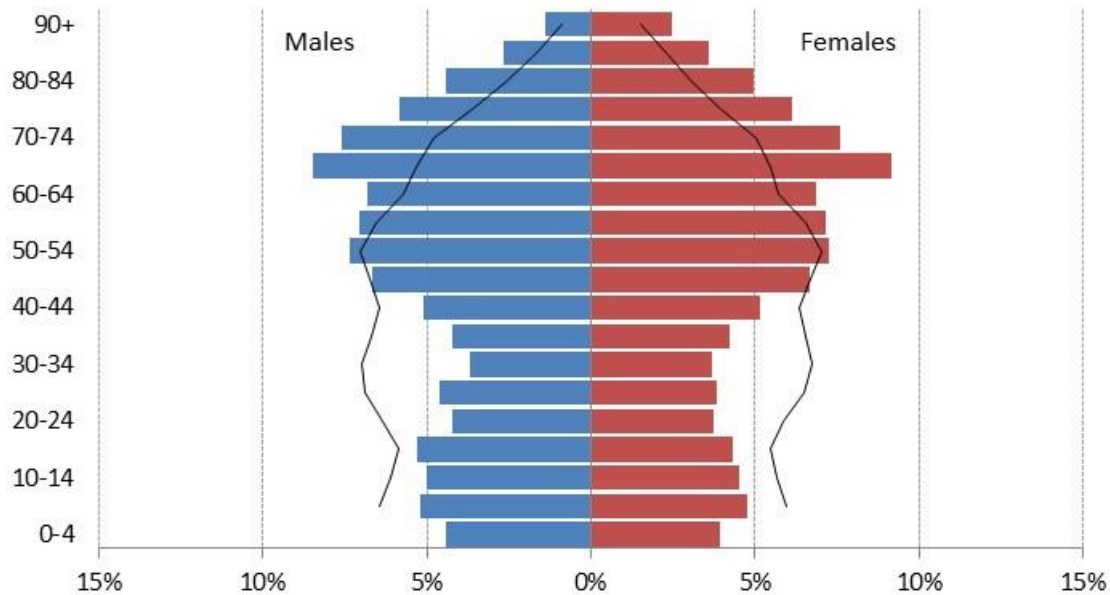
Population

ONS 2016 mid-year population estimates show that there are approximately 76,500 people living in the East Dorset locality (36,700 males and 39,800 females). The area covered by the locality is largely rural, with population density being highest around Verwood, Ferndown and Wimborne.



Compared to the Dorset CCG average, East Dorset has a higher proportion of people aged 55 to 79, and a lower proportion of people aged 15 to 44. The proportion of the population aged 65 & over in East Dorset is significantly higher than the national average (32% compared with 18%).

East Dorset Population Pyramid with national comparator (2016 data)



Locally produced projections suggest that the population of the Eat Dorset locality will rise at a slower rate (just under +1.5%) than both the Dorset CCG average (+2%) and the national average (+2%) between 2018 and 2021. Within this trend, the proportion of the population aged 65 & over will remain significantly higher than the national average.

Ethnicity

The vast majority of the population in East Dorset are White British. Ethnic minority groups account for a much smaller proportion of the population locally than in England as a whole (just under 2% compared with 15% - see table below which is based on 2011 Census data).

	East Dorset	England
White	98.21%	85.42%
Mixed	0.68%	2.25%
Asian	0.87%	7.82%
Black	0.14%	3.48%
Other	0.11%	1.03%

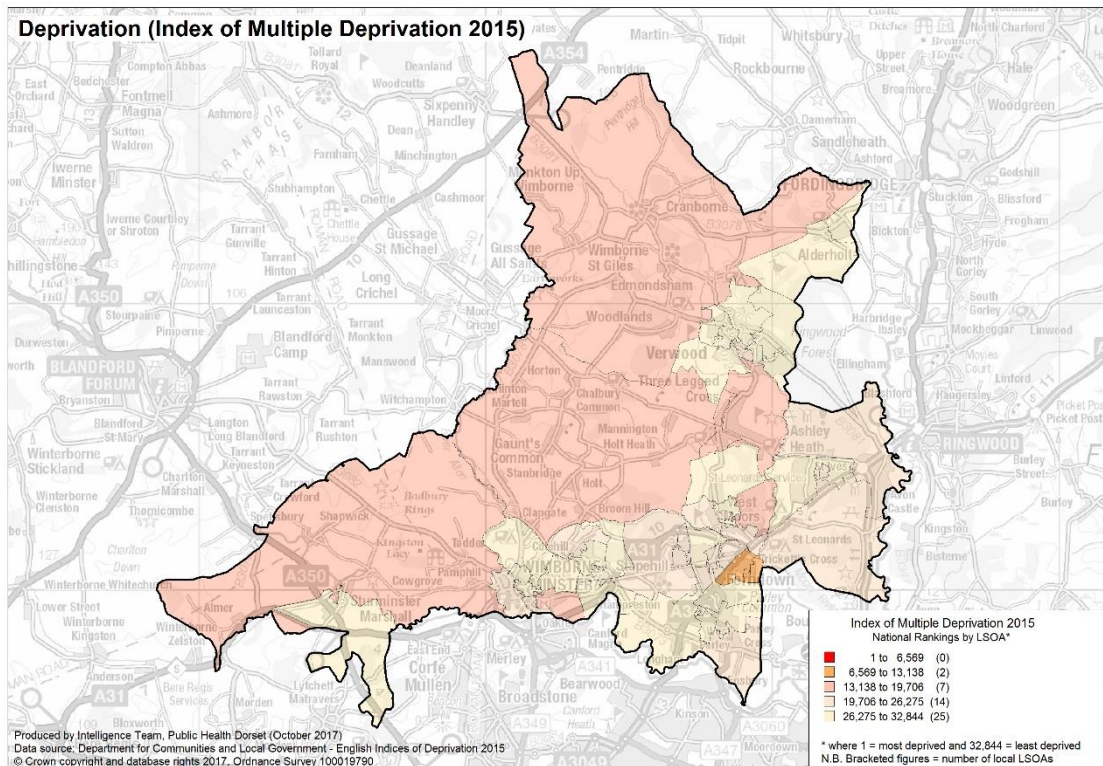
Religion

The 2011 Census suggests that, as in England as whole, the majority of East Dorset's population are Christians. However, the proportion of locality's population whose religion is either Buddhist, Hindu, Jewish, Muslim or Sikh is lower than the England average.

	East Dorset	England
Christian	67.03%	59.40%
Buddhist	0.19%	0.50%
Hindu	0.12%	1.50%
Jewish	0.19%	0.50%
Muslim	0.44%	5.00%
Sikh	0.01%	0.80%
Other religion	0.41%	0.40%
No religion	23.90%	24.70%
Not stated	7.70%	7.20%

Deprivation

The highest levels of deprivation in East Dorset are found around Ferndown. Here, two lower super output areas (LSOAs) are amongst the 40% most deprived in England. However, no LSOAs in East Dorset are in the most deprived national quintile. Moreover, within the Dorset CCG area, the locality has the highest number of LSOAs which are in the least deprived 20% in England (52% of the LSOAs which make up the East Dorset locality are in the least deprived national quintile – a significantly higher proportion than in the Dorset CCG area as a whole).



Housing

To understand any increases in demand for services based on planned housing developments, planning applications with consent to build over the next three years have been analysed. This gives a realistic picture of housing growth within the locality.

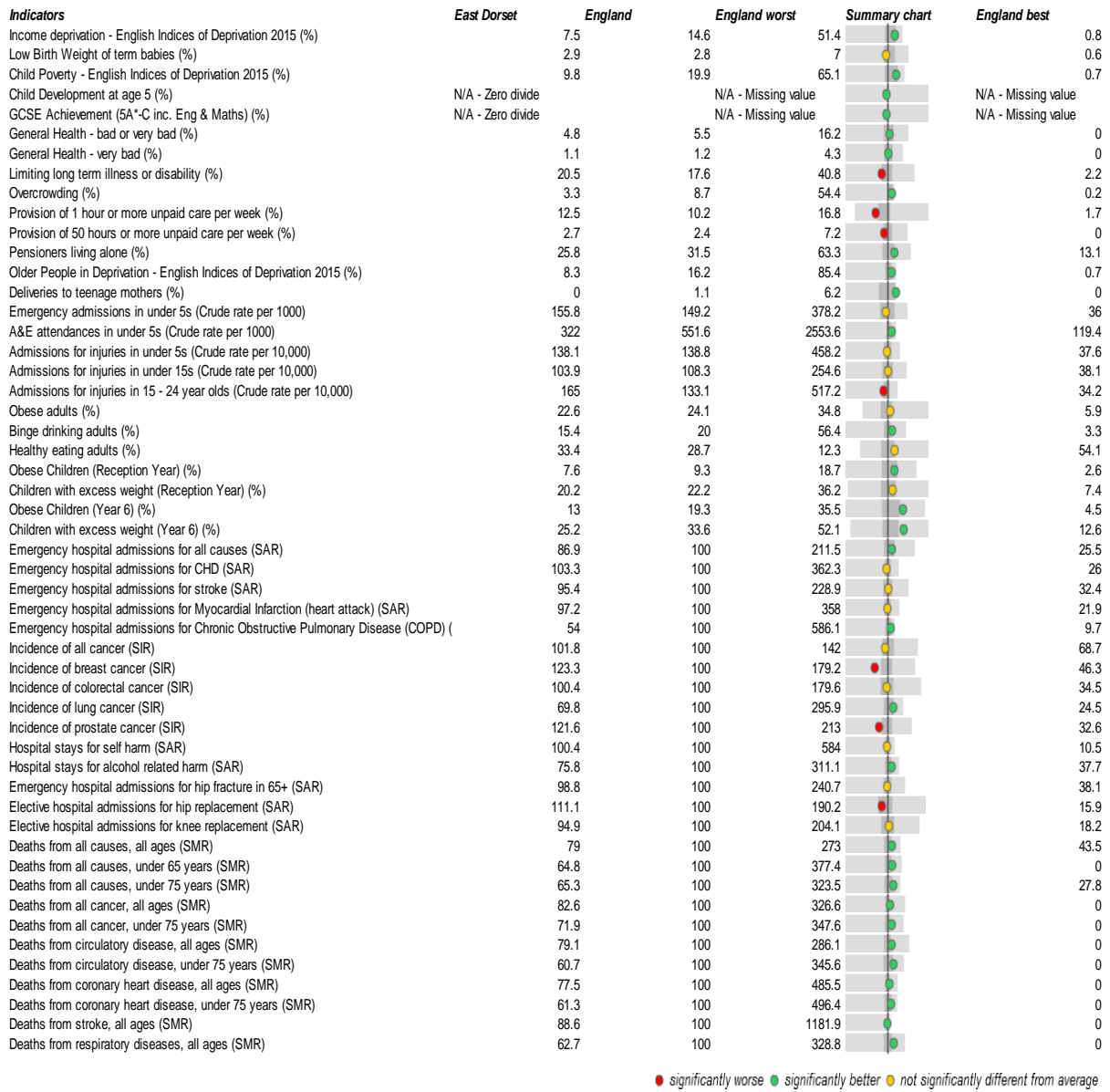
At the time of publishing the consultation draft, data on application for 16/17 was not available. Data is now available, showing most planned housing development in Ferndown (+664) if these developments are completed in the next three years. A new planning application has also been submitted for a development in Colehill of 275 dwellings. It is unknown if this development will be completed in the 3 year timescale of this PNA document, but it may be started.

Area	Net dwellings
Ferndown	664
Colehill	283
Alderholt	95
St Leonards and St Ives	30
Knowlton	23
Sturminster Marshall	22
Verwood & Three Legged Cross	19
Wimborne	17
West Parley	13
West Moors	5
Holt	3

Health & Wider Determinants

To understand the health needs and wider determinants of health in the locality a national profiling tool has been used. This compares locality level data with the English average and highlights any areas that are significantly different.

The spine chart below visualises the data and for each indicator it highlights whether the score locally is significantly different to national rates using a 95% confidence interval.



The main areas where the East Dorset locality has worse outcomes than the national average include self reported limiting long term illness, incidences of breast cancer and prostate cancer and elective hospital admissions for hip replacements.