

Appendix O - Poole Central Locality Overview

The Poole Central locality is largely urban with a higher than average population aged 15-44 and lower proportion of people aged 55-79 compared to the rest of Dorset. The locality has three areas that are amongst the 20% most deprived in England. The Poole Central locality will see the largest housing growth in the Poole Town and Hamworthy East providing these developments are completed. An analysis of health and the wider determinants of health highlights poor outcomes in provision of unpaid care, self reported limiting long term illness, deliveries to teenage mothers, incidence of prostate and colorectal cancer and emergency hospital admissions for coronary heart disease, heart attacks, stroke and hip fracture and young people admitted for injury.

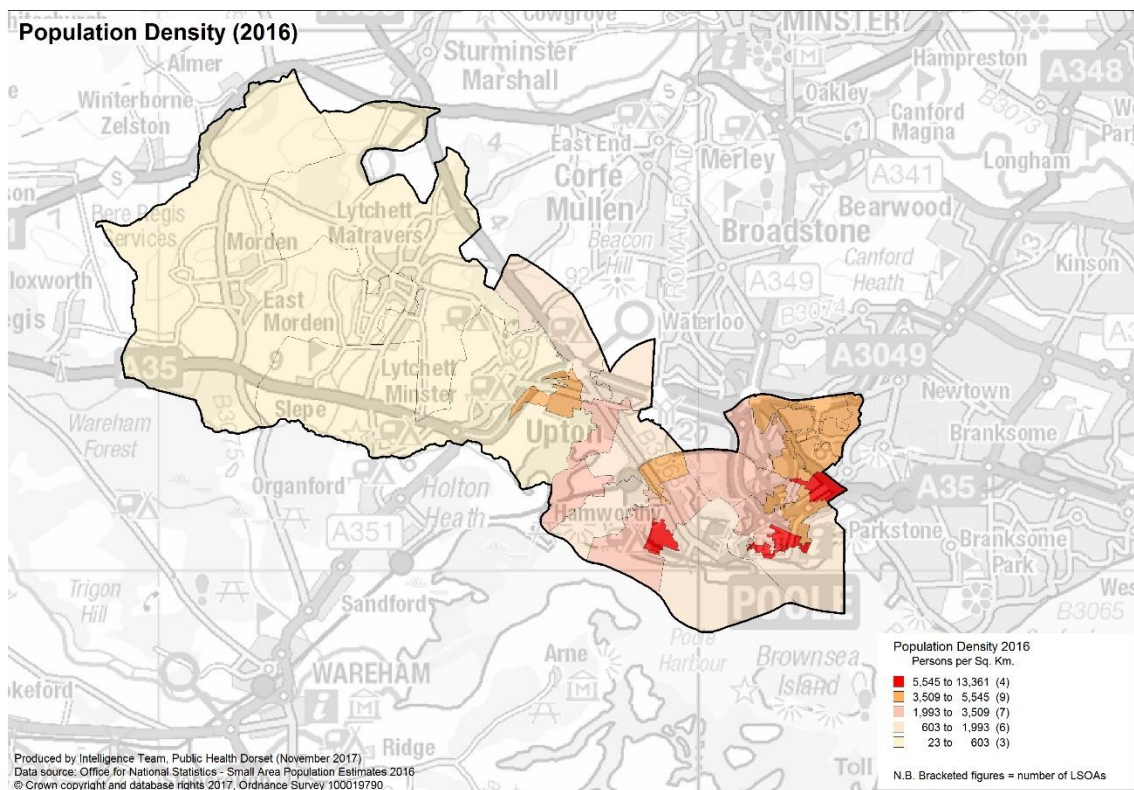
The following headings have been used to describe the locality in more detail:

- Demographics
- Housing
- Health and Wider Determinants

Demographic

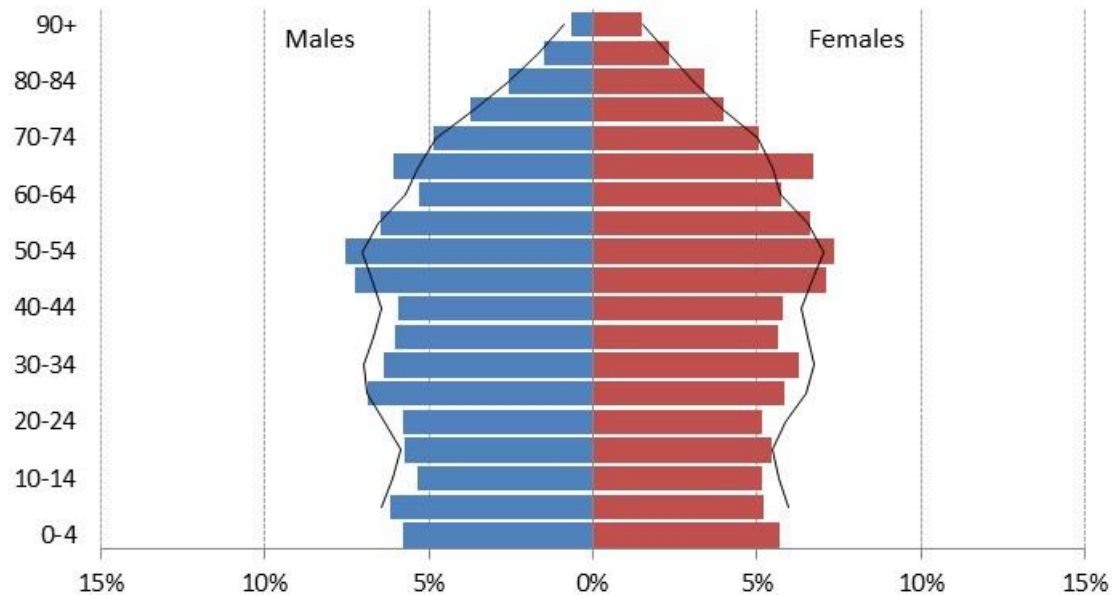
Population

ONS 2016 mid-year population estimates show that there are approximately 49,300 people living in the Poole Central locality (24,300 males and 25,000 females). In this urban area, population density is highest around Oakdale and Poole Town.



Compared to the Dorset CCG average, Poole Central has a higher proportion of people aged 15-44, and a lower proportion of 55 to 79 year olds. Nevertheless, the proportion of the population aged 65 & over in Poole Central is higher than the national average (21% compared with 18%).

Poole Central Population Pyramid with national comparators (2016 data)



Locally produced projections suggest that the population of the Poole Central locality will rise at a slightly higher rate (+2.5%) than both the Dorset CCG average (+2%) and the national average (+2%) between 2018 and 2021. Within this trend, the proportion of the population aged 65 & over will remain higher than the national average.

Ethnicity

The vast majority of the population in Poole Central are White British. Ethnic minority groups account for a smaller proportion of the population locally than in England as a whole (4% compared with 15% - see table below which is based on 2011 Census data).

	Poole Central	England
White	96.16%	85.42%
Mixed	1.10%	2.25%
Asian	2.25%	7.82%
Black	0.28%	3.48%
Other	0.21%	1.03%

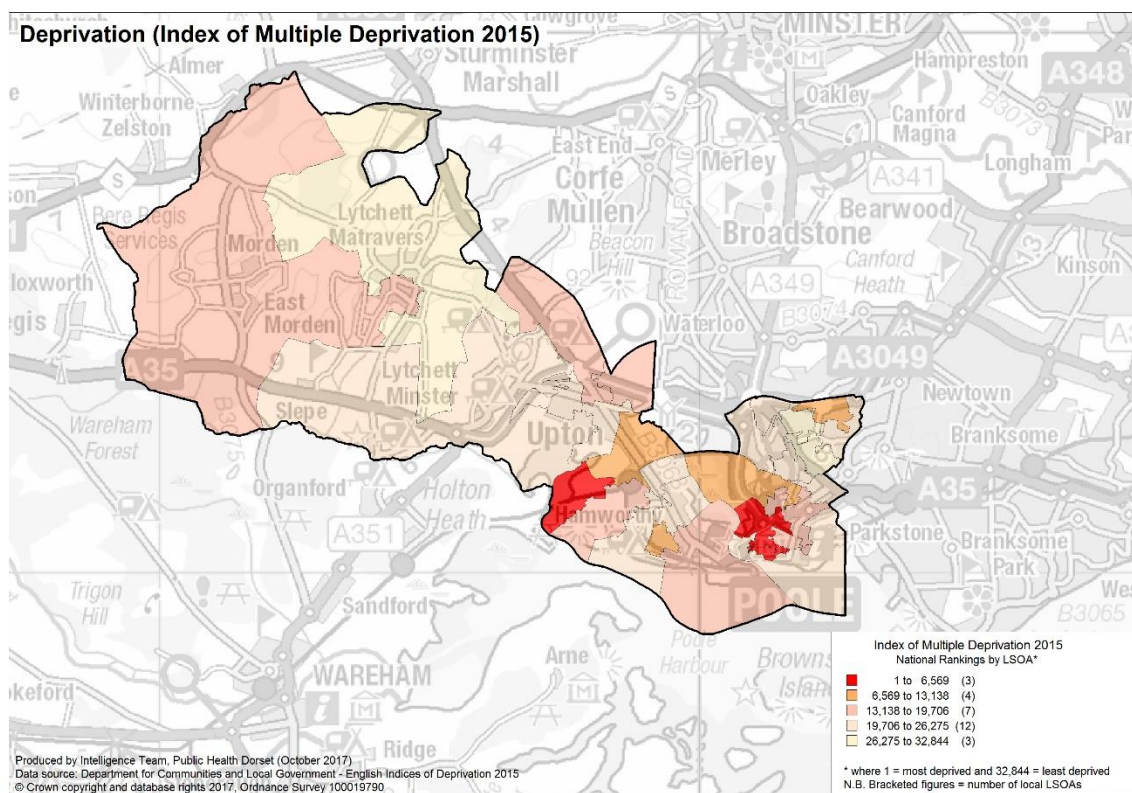
Religion

The 2011 Census suggests that, as in England as whole, the majority of Poole Central's population are Christians. However, the proportion of the locality's population whose religion is either Buddhist, Hindu, Jewish, Muslim or Sikh is lower than the England average.

	Poole Central	England
Christian	60.10%	59.40%
Buddhist	0.30%	0.50%
Hindu	0.44%	1.50%
Jewish	0.09%	0.50%
Muslim	0.59%	5.00%
Sikh	0.03%	0.80%
Other religion	0.55%	0.40%
No religion	30.12%	24.70%
Not stated	7.77%	7.20%

Deprivation

The most deprived areas of the Poole Central locality are Hamworthy West (Turlin Moor) and Poole Town. Here, three lower super output areas (LSOAs) are amongst the 20% most deprived in England. A further four LSOAs are amongst the 40% most deprived.



Housing

To understand any increases in demand for services based on planned housing developments, planning applications with consent to build over the next three years have been analysed. This gives a realistic picture of housing growth within the locality. The net level of development in the locality is shown below, providing these developments are completed. Within the locality, Poole Town and Hamworthy East will see the highest levels of housing development.

Ward (2014)	Net Development
Hamworthy East	166
Hamworthy West	13
Lytchett Matravers	23
Lytchett Minster and Upton East	26
Lytchett Minster and Upton West	25
Oakdale	25
Poole Town	670

Health & Wider Determinants

To understand the health needs and wider determinants of health in the locality a national profiling tool has been used. This compares locality level data with the English average and highlights any areas that are significantly different.

The spine chart below visualises the data and for each indicator it highlights whether the score locally is significantly different to national rates using a 95% confidence interval.



Indicators

	Poole Central	England	England worst	Summary chart	England best
Income deprivation - English Indices of Deprivation 2015 (%)	13.1	14.6	51.4		0.8
Low Birth Weight of term babies (%)	3.1	2.8	7		0.6
Child Poverty - English Indices of Deprivation 2015 (%)	18.9	19.9	65.1		0.7
Child Development at age 5 (%)	N/A - Zero divide		N/A - Missing value		N/A - Missing value
GCSE Achievement (5A*-C inc. Eng & Maths) (%)	N/A - Zero divide		N/A - Missing value		N/A - Missing value
General Health - bad or very bad (%)	5.4	5.5	16.2		0
General Health - very bad (%)	1.3	1.2	4.3		0
Limiting long term illness or disability (%)	18.7	17.6	40.8		2.2
Overcrowding (%)	7.2	8.7	54.4		0.2
Provision of 1 hour or more unpaid care per week (%)	10.8	10.2	16.8		1.7
Provision of 50 hours or more unpaid care per week (%)	2.5	2.4	7.2		0
Pensioners living alone (%)	32.2	31.5	63.3		13.1
Older People in Deprivation - English Indices of Deprivation 2015 (%)	15.4	16.2	85.4		0.7
Deliveries to teenage mothers (%)	2	1.1	6.2		0
Emergency admissions in under 5s (Crude rate per 1000)	206.6	149.2	378.2		36
A&E attendances in under 5s (Crude rate per 1000)	381.7	551.6	2553.6		119.4
Admissions for injuries in under 5s (Crude rate per 10,000)	178.1	138.8	458.2		37.6
Admissions for injuries in under 15s (Crude rate per 10,000)	139.9	108.3	254.6		38.1
Admissions for injuries in 15 - 24 year olds (Crude rate per 10,000)	208.6	133.1	517.2		34.2
Obese adults (%)	26.5	24.1	34.8		5.9
Binge drinking adults (%)	20.6	20	56.4		3.3
Healthy eating adults (%)	26.2	28.7	12.3		54.1
Obese Children (Reception Year) (%)	9	9.3	18.7		2.6
Children with excess weight (Reception Year) (%)	21.2	22.2	36.2		7.4
Obese Children (Year 6) (%)	16.1	19.3	35.5		4.5
Children with excess weight (Year 6) (%)	31.2	33.6	52.1		12.6
Emergency hospital admissions for all causes (SAR)	109.9	100	211.5		25.5
Emergency hospital admissions for CHD (SAR)	153.4	100	362.3		26
Emergency hospital admissions for stroke (SAR)	130.3	100	228.9		32.4
Emergency hospital admissions for Myocardial Infarction (heart attack) (SAR)	141.6	100	358		21.9
Emergency hospital admissions for Chronic Obstructive Pulmonary Disease (COPD) (SAR)	108	100	586.1		9.7
Incidence of all cancer (SIR)	110.6	100	142		68.7
Incidence of breast cancer (SIR)	111.8	100	179.2		46.3
Incidence of colorectal cancer (SIR)	118.9	100	179.6		34.5
Incidence of lung cancer (SIR)	92.3	100	295.9		24.5
Incidence of prostate cancer (SIR)	119.3	100	213		32.6
Hospital stays for self harm (SAR)	147.9	100	584		10.5
Hospital stays for alcohol related harm (SAR)	99.7	100	311.1		37.7
Emergency hospital admissions for hip fracture in 65+ (SAR)	112.5	100	240.7		38.1
Elective hospital admissions for hip replacement (SAR)	110.2	100	190.2		15.9
Elective hospital admissions for knee replacement (SAR)	103.9	100	204.1		18.2
Deaths from all causes, all ages (SMR)	93.9	100	273		43.5
Deaths from all causes, under 65 years (SMR)	102	100	377.4		0
Deaths from all causes, under 75 years (SMR)	99.9	100	323.5		27.8
Deaths from all cancer, all ages (SMR)	104.5	100	326.6		0
Deaths from all cancer, under 75 years (SMR)	109.5	100	347.6		0
Deaths from circulatory disease, all ages (SMR)	87.5	100	286.1		0
Deaths from circulatory disease, under 75 years (SMR)	87.1	100	345.6		0
Deaths from coronary heart disease, all ages (SMR)	90.2	100	485.5		0
Deaths from coronary heart disease, under 75 years (SMR)	84.9	100	496.4		0
Deaths from stroke, all ages (SMR)	90.7	100	1181.9		0
Deaths from respiratory diseases, all ages (SMR)	83.1	100	328.8		0

● significantly worse ● significantly better ● not significantly different from average

The main areas where the Poole Central locality has worse outcomes than the national average are in provision of unpaid care, self reported limiting long term illness, deliveries to teenage mothers, incidence of prostate and colorectal cancer and emergency hospital admissions for coronary heart disease, heart attacks, stroke and hip fracture and young people admitted for injury.