

Special Educational Needs and Disabilities for CYP in Bournemouth, Christchurch and Poole

BCP Council



89%

achieved expected level of growth at 2 to 2½ year review



67%

achieved expected standard in reading, writing and maths combined



78%

attained their KS4 indicator



3063

CYP aged between 3 and 25 years with an EHCP plan

27%

are girls



73%

are boys

34%

attend mainstream school



40%

attend special school



4%

are in care

1%

have care experience

18%

have speech, language and communication difficulty



2%

have specific learning difficulty

29%

have social, emotional or mental health needs



30%

have ASD

14%

have been suspended

6698

CYP aged between 2 and 19 years requiring SEN support

38%

are girls

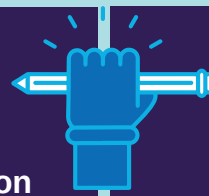


62%

are boys

5%

are in early years education



47%

are in primary education

43%

are in secondary education



5%

are post-16

28%

have speech, language and communication difficulty



20%

have specific learning difficulty



20%

have social, emotional or mental health needs



6%

have ASD

CYP: Children and Young People

EHCP: Educational and Health Care Plan

SEN: Special Educational Needs

ASD: Autism Spectrum Disorder