

Pharmaceutical Needs Assessment: Crane Valley Primary Care Network Profile

September 2022



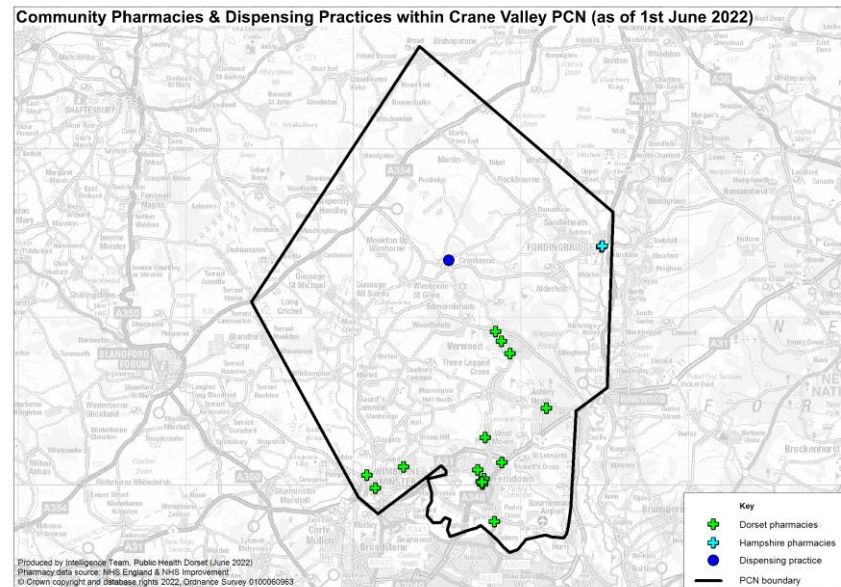
Introduction

Crane Valley PCN has no gaps and is predominately in Dorset Council but also covers some areas of BCP Council as well as part of Wiltshire and Hampshire. It is largely rural with a higher than average proportion of older people compared to both the Dorset and national averages. The PCN has lower levels of deprivation compared to both local and national levels with no LSOAs amongst the 20% most deprived. Housing growth will be seen predominantly in Wimborne Minster as well as West Parley and Verwood, provided these developments are completed.

An analysis of health and the wider determinants of health highlights poor outcomes for cancer, coronary heart disease, heart failure, atrial fibrillation, stroke, hypertension, asthma, hospital stays for self-harm and self-reported limiting long-term illness.

There are currently 15 Dorset pharmacies and two dispensing practices as of June 2022. There is also one Hampshire pharmacy that is located within the PCN boundary. The following headings have been used to describe the PCN in more detail:

- Number of pharmacies, openings hours & services
- Demographics
- Housing
- Deprivation
- Health and Wider Determinants



Warning: The geographies within this PCN area can be in the catchment of multiple PCN boundaries. Therefore the information contained within these profiles should not be aggregated or compared with other profiles as this could lead to misleading interpretations.



Number of Pharmacies

There are currently 15 pharmacies in Crane Valley as of June 2022. Six pharmacies are owned by national pharmacy chains:

- 2 by Boots Pharmacy
- 1 by Rowlands Pharmacy
- 1 by Lloyds Pharmacy
- 1 by Tesco Pharmacy
- 1 by Morrisons Pharmacy

Nine pharmacies are owned by other providers. There are two 100-hour pharmacies in Crane Valley as of June 2022 (Ferndown Pharmacy on Ringwood Road and Verwood Pharmacy on Lake Road) and thirteen 40-hour pharmacies.

There are 13 pharmacies that are Community Pharmacist Consultation Service (CPCS) accredited providing a total of 485 CPCS consultations in the first 9 months of 2021/22. In addition, all pharmacies have access to the Electronic Prescription Service (EPS).



Number of Pharmacies

There is one distance-selling pharmacy (Meds2Home Pharmacy on Victoria Road), one dispensing appliance contractor (Respond Healthcare on Wimborne Road East) and no pharmacies with local pharmaceutical services contracts as of June 2022.

Since the last PNA was published, one new pharmacy has opened (Meds2Home Pharmacy on Victoria Road) in Crane Valley and one pharmacy (Instachem Pharmacy at Woolsbridge Industrial Estate) has relocated to Ringwood, Hampshire and, so, no longer falls under Dorset Health and Wellbeing Board.

The number of items dispensed decreased by 4.4% between 2018/19 and 2020/21.

The number of items dispensed per head in 2020/21 was higher than the South West and England averages. The number of pharmacies per 100,000 population in 2020/21 in Crane Valley was also higher than the South West and England averages (see next table).



Number of Pharmacies

Year	GP patients	Number of pharmacies	Pharmacies per 100,000 patients	Number of items dispensed	Items dispensed per patient
2018/19	-	15	-	1,640,588	-
2019/20	30,480	15	49.2	1,635,357	53.7
2020/21	32,225	15	46.5	1,568,966	48.7
2021/22 (9 months)	33,180	15	45.2	1,247,309	-
South West 2020/21	5,917,594	1,065	18.0	95,447,553	16.1
England 2020/21	60,650,740	11,748	19.4	1,016,769,042	16.8

Notes:

1. The column GP patients is based on estimates of number of patients registered with a GP in this PCN. The estimates for each financial year are taken in March. For example, for the number of patients registered with a GP in March 2021 is taken as the population estimate for financial year 2020/2021. The figures for the South West and England can be found at: <https://digital.nhs.uk/data-and-information/publications/statistical/patients-registered-at-a-gp-practice/march-2021>
2. Estimates of number of patients registered at a GP within the PCN were not available for 2018/19 at the time of writing
3. Number of pharmacies in England and South West England in 2020/21 are taken from Supporting Tables from NHSBSA found at: <https://www.nhsbsa.nhs.uk/statistical-collections/general-pharmaceutical-services-england/general-pharmaceutical-services-england-201516-202021>
4. All pharmacy numbers include both community pharmacies and DACs

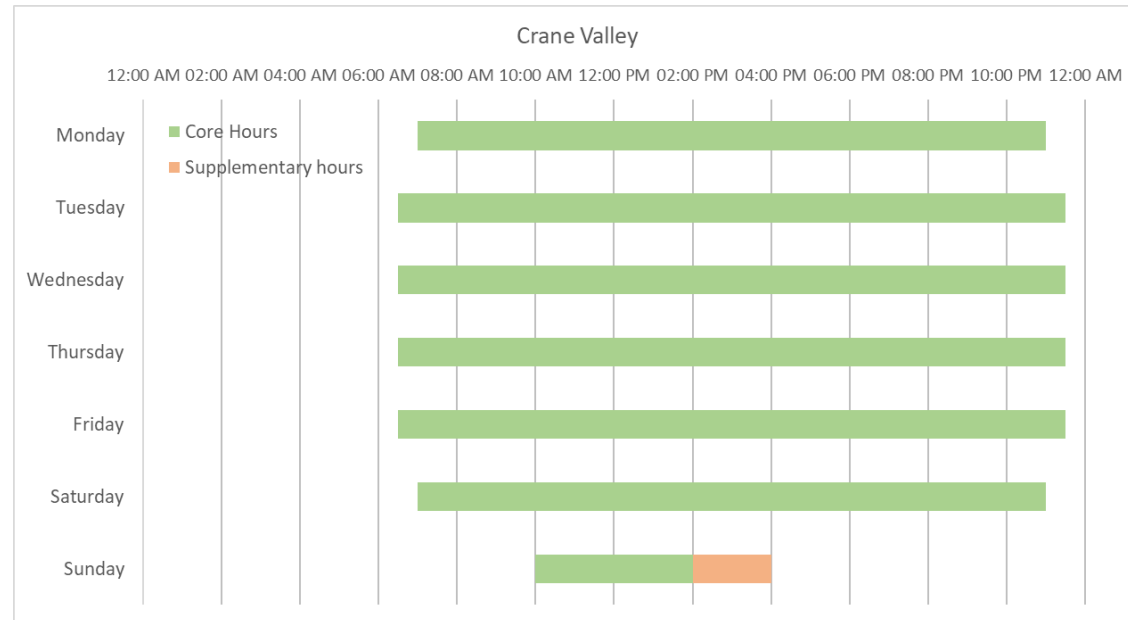


Pharmacy Opening Times

Access to the essential services (core plus supplementary opening hours)

- 4 pharmacies are open 7 days a week
- 7 pharmacies are open on Monday to Saturday only
- 4 pharmacies are open Monday to Friday only
- 2 pharmacies are open every day before 8 a.m. from Monday to Friday
- 6 pharmacies are open every day until after 6.30 p.m. from Monday to Friday

The chart shows the earliest opening hours and the latest closing hours for the Crane Valley area. The majority of the opening hours are covered by core hours, with the exception of Sunday between 2 p.m. and 4 p.m. which is supplementary.



Access to Services

Access to Medicines Use Review (MUR)

Based on data for the first 9 months of the 2021/22 financial year, 0 MURs were carried out in Crane Valley as the service has been decommissioned. This is compared to 1,043 MURs in 2020/21 and 4,457 MURs in 2018/19.

Access to New Medicines Service (NMS)

13 pharmacies in Crane Valley had NMS accreditation as of May 2022. Over the first 9-month period of 2021/22, 1,887 NMSs were undertaken. This is compared to the whole of 2020/21 where a total of 1,906 NMSs were undertaken.

Access to the 'on demand availability of specialist medicines' enhanced service

As of May 2022, no pharmacies in Crane Valley provided the specialist medicines advanced service.

Access to dispensing of appliances

Data for this were unavailable at the time of writing.

Influenza vaccination advanced service

12 pharmacies in Crane Valley delivered the influenza vaccination advanced service as of May 2022. A total of 7,545 vaccinations were given according to the NHSBSA's Advanced Flu Vaccination Service report dataset during the 2021/22 flu season in Crane Valley locality pharmacies matched with the Dorset STP influenza report pharmacies.

Stoma appliance customisation advanced service

One dispensing appliance contractor and two pharmacies in Crane Valley provided stoma customisation in 2021/22 (Respond Healthcare on Wimborne Road East, Rowlands Pharmacy on St Mary's Road and Lloyds Pharmacy on Station Road), with a total of 11,160 stoma customisations in the first 9 months of 2021/22. In comparison, in 2018/19 a total of 11,354 stoma customisations were performed.



Access to Services

Appliance use review (AUR) advanced service

There is one dispensing appliance contractor in Crane Valley that provides this service (Respond Healthcare on Wimborne Road East). There were 2 AURs in the first 9 months of 2021/22 but no other AURs were performed between 2018/19 and 2020/21.

Other services (as of May 2022)

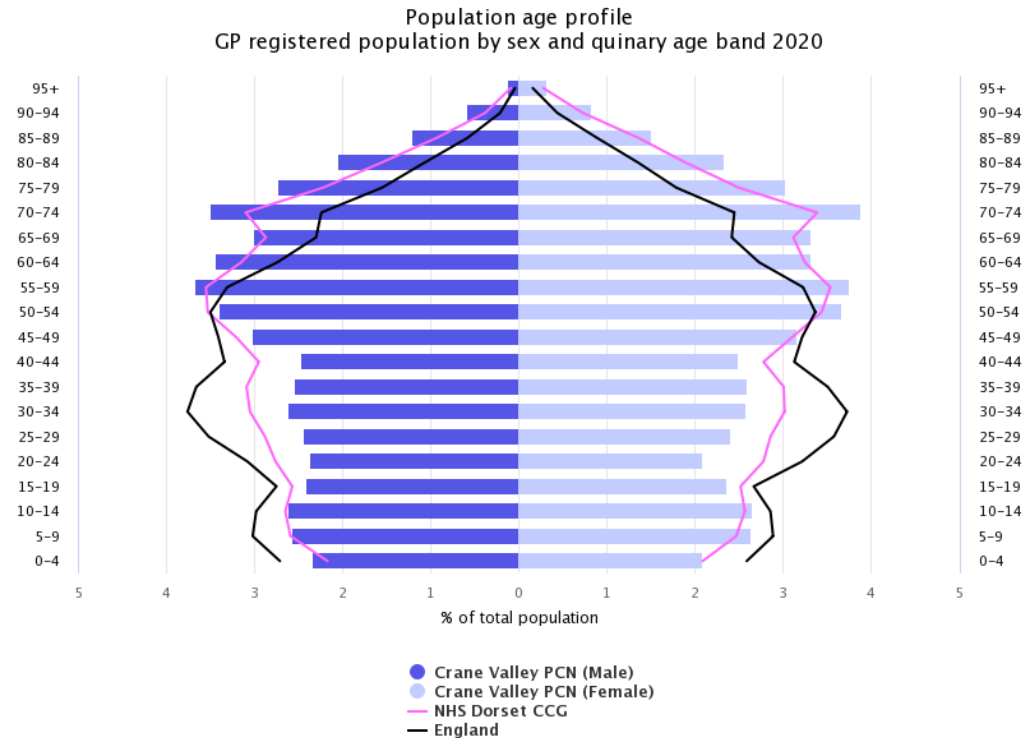
- No pharmacies provided the Hepatitis-C Antibody Testing Service
- 10 pharmacies provided the Hypertension Case-Finding Service
- 11 pharmacies delivered the Urgent Repeat Medicines Service
- 5 pharmacies provided the Stop Smoking Service
 - Colehill Pharmacy, Middlehill Road
 - Boots Pharmacy, Ringwood Road
 - Parley Cross Pharmacy, New Road
 - Walford Mill Pharmacy, Knobcrook Road
 - Ashley Health Pharmacy, High Street



Demographics

The population age profile shows that there are approximately 31,400 people registered at GP practices in Crane Valley PCN (15,400 males and 16,000 females).

Compared to the Dorset ICS average, Crane Valley has a similar proportion of people aged under 18 and a higher proportion of people aged 65 & over.



Source: National General Practice Profiles 2020



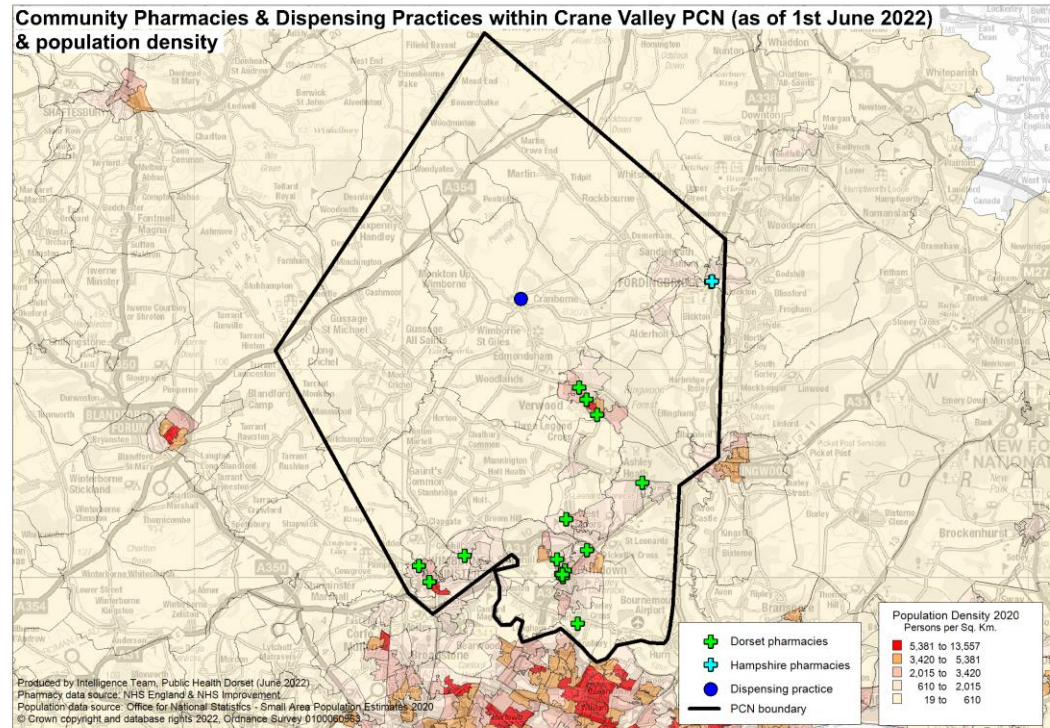
Demographics

The area covered by the PCN is largely rural with the highest population density around the towns of Wimborne, Ferndown and Verwood.

Over the next 3 years from 2022-25 projections suggest the population of Dorset overall will increase by 5.2 thousand (1.4%).

This growth is driven by increases in the population aged over 65, with the number of children and young people (aged 0-16) projected to decrease.

The number of over 65s is projected to increase by almost 7.1 thousand (6%) to 2025, compared to a small decrease of around 1 thousand children and young people aged 0-16. The working age population is forecast to remain roughly unchanged. By 2025 those aged 65+ will account for 32% of the overall population.



Housing

To understand any increases in demand for services based on planned housing developments, planning applications with consent to build to 2025 in BCP and 2026 in Dorset have been analysed. Postcodes (or the nearest existing postcode to the development site) have been matched to LSOAs and then PCN networks.

This gives a realistic picture of housing growth within the PCN. The net level of development for this PCN area is approximately 2,295 dwellings. This is about 12% of the total net housing development for BCP and Dorset.

Development looks to be predominantly towards the south of the PCN area, with significant development in Wimborne Minster (1,129) particularly around the Leigh Park area, West Parley (296) particularly around Parley Cross, and Verwood (312).

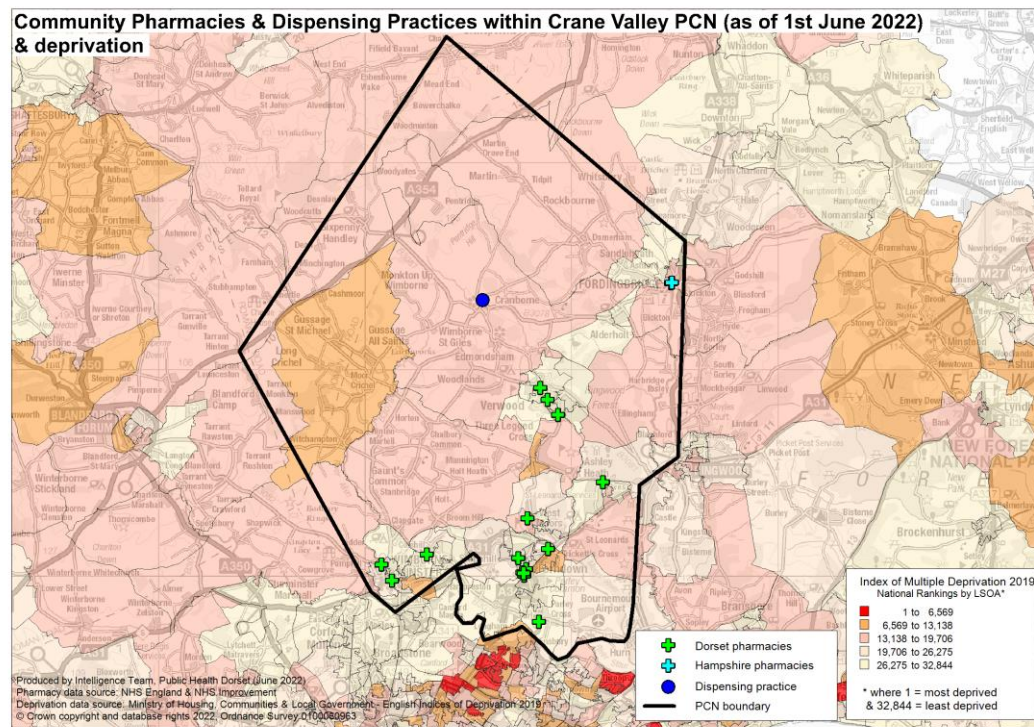


Deprivation

Crane Valley PCN has low levels of deprivation with an average IMD 2019 Score of 11.9.

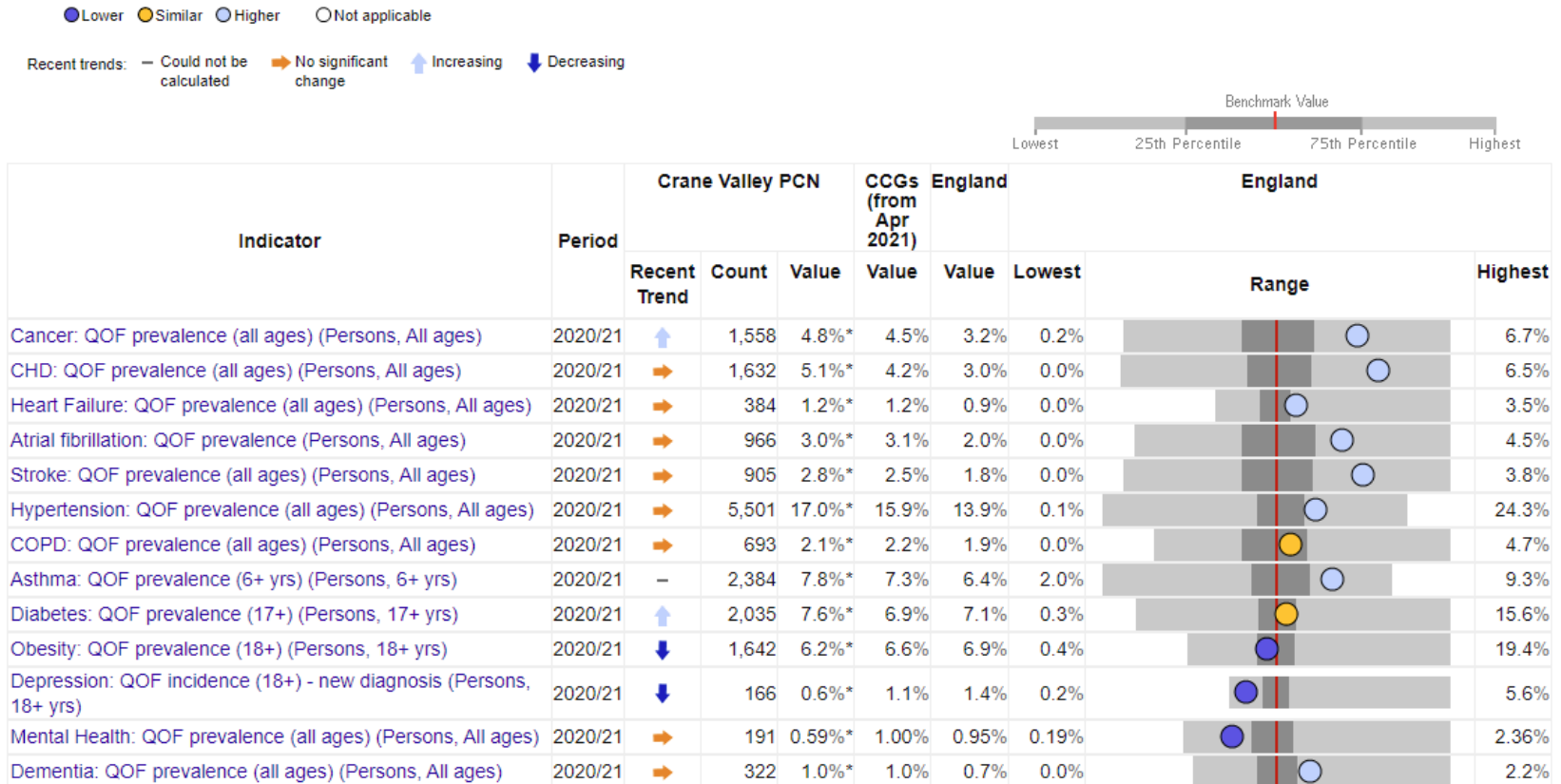
The highest levels of deprivation in Crane Valley PCN are found around Wimborne Minster, Ferndown, Gussage St Michael and Three Legged Cross. Here five lower super output areas (LSOAs) are amongst the 40% most deprived in England.

However, no LSOAs in Crane Valley PCN are in the most deprived national quintile.



Health and Wider Determinants

To understand the health needs and wider determinants of health in the PCN, the spine chart below visualises the data on a table of indicators and for each one it highlights whether the value is lower or higher benchmarked to national rates. The grey bar shows the range between the lowest or highest areas in England.


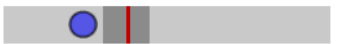





Health and Wider Determinants

● Lower ● Similar ● Higher ○ Not applicable

Recent trends: — Could not be calculated → No significant change ↑ Increasing ↓ Decreasing



Indicator	Period	Crane Valley PCN		CCGs (from Apr 2021)	England	England			
		Recent Trend	Count	Value	Value	Value	Lowest	Range	Highest
% reporting to be unemployed (Persons, 16+ yrs)	2021	→	12	2.6%*	3.4%	5.5%	0.0%		17.6%
% reporting to be in paid work or in full-time education (Persons, 16+ yrs)	2021	→	245	54.2%*	56.8%	61.8%	41.3%		95.0%
% with caring responsibility (Persons, 16+ yrs)	2021	→	84	18.6%*	19.9%	18.2%	1.0%		32.6%
% with a long-standing health condition (Persons, 16+ yrs)	2021	→	247	55.3%*	53.8%	51.1%	27.3%		73.9%
Estimated smoking prevalence (QOF) (Persons, 15+ yrs)	2020/21	→	3,153	11.4%*	15.2%	15.9%	5.0%		34.3%

Source: National General Practice Profiles, accessed 2022



Health and Wider Determinants

Local Health provides evidence of inequalities within local areas aggregated to represent Crane Valley PCN. The spine chart below visualises the data and for each indicator it highlights whether the value is significantly different to national rates using a 95% confidence interval.

