

Pharmaceutical Needs Assessment:  
North Bournemouth  
Primary Care Network Profile  
September 2022



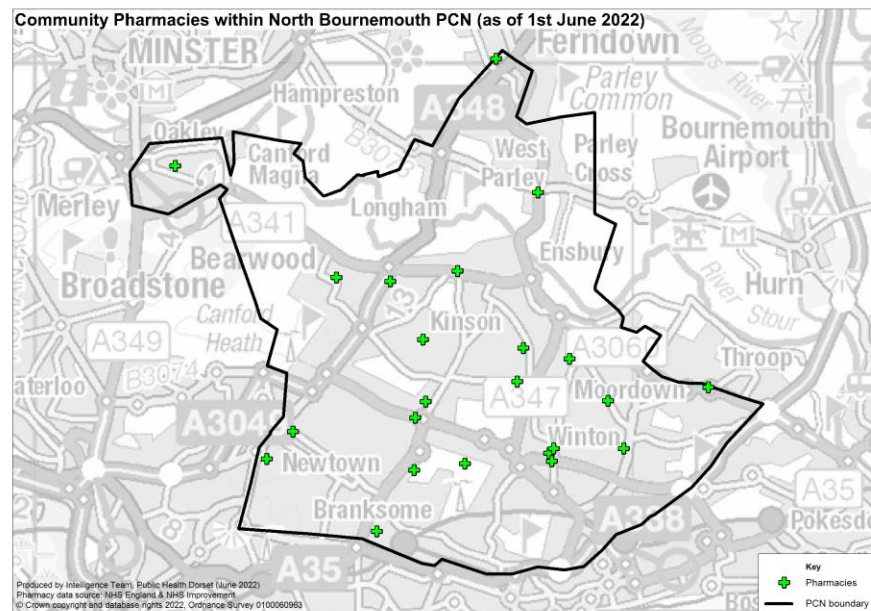
# Introduction

North Bournemouth PCN has no gaps and is predominately in BCP Council but a small portion is within Dorset Council. It is largely urban with a higher proportion of 20-24 year-olds compared to the national average due to Bournemouth University. The PCN has higher levels of deprivation compared to both local and national levels with eight areas in the worst 20% deprived. Housing growth will be seen in Bournemouth Central, Merley and Bearwood around Magna Road and West Parley, provided these developments are completed.

An analysis of health and the wider determinants of health highlights poor outcomes for coronary heart disease, stroke, COPD, asthma, smoking prevalence, older people living alone, overcrowding, hospital admissions for heart attacks, hip fractures, hospital stays for alcohol related harm and self-reported limiting long-term illness.

There are 24 pharmacies in North Bournemouth PCN. The following headings have been used to describe the PCN in more detail:

- Number of pharmacies, openings hours & services
- Demographics
- Housing
- Deprivation
- Health and Wider Determinants



*Warning: The geographies within this PCN area can be in the catchment of multiple PCN boundaries. Therefore the information contained within these profiles should not be aggregated or compared with other profiles as this could lead to misleading interpretations.*



# Number of Pharmacies

There are currently 24 pharmacies in North Bournemouth as of June 2022. Of these, 15 pharmacies are owned by national pharmacy chains:

- 3 by Boots Pharmacy
- 3 by Lloyds Pharmacy
- 3 by Rowlands Pharmacy
- 3 by Avicenna Pharmacy
- 2 by Day Lewis Pharmacy
- 1 by Superdrug Pharmacy

There are 9 pharmacies owned by other providers. There are three 100-hour pharmacies as of June 2022:

- Castle Lane Pharmacy, Castle Lane West
- Wallisdown Pharmacy, Wallisdown Road
- Ferndown Pharmacy, Ringwood Road

There are twenty one 40-hour pharmacies. 21 pharmacies are Community Pharmacist Consultation Service (CPCS) accredited providing a total of 409 CPCS consultations in the first 9 months of 2021/22. In addition, all pharmacies have access to the Electronic Prescription Service (EPS).



# Number of Pharmacies

There are no distance-selling pharmacies, no pharmacies have local pharmaceutical services contracts and there is one dispensing appliance contractor (Fittleworth Medical on Victoria Park Road) as of June 2022.

Since the last PNA was published, one pharmacy has closed (Rowlands Pharmacy on Charminster Road) and no new pharmacies have opened in North Bournemouth.

The number of items dispensed decreased by 2.1% between 2018/19 and 2020/21.

The number of items dispensed per head in 2020/21 was higher than the South West and England averages. The number of pharmacies per 100,000 population in 2020/21 in North Bournemouth was also higher than the South West and England averages (see next table).



# Number of Pharmacies

Year	GP patients	Number of pharmacies	Pharmacies per 100,000 patients	Number of items dispensed	Items dispensed per patient
2018/19	-	25	-	2,114,363	-
2019/20	53,623	25	46.6	2,145,310	40.0
2020/21	51,941	25	48.1	2,070,358	39.9
2021/22 (9 months)	53,524	24	44.8	1,608,589	-
South West 2020/21	5,917,594	1,065	18.0	95,447,553	16.1
England 2020/21	60,650,740	11,748	19.4	1,016,769,042	16.8

## Notes:

1. The column GP patients is based on estimates of number of patients registered with a GP in this PCN. The estimates for each financial year are taken in March. For example, for the number of patients registered with a GP in March 2021 is taken as the population estimate for financial year 2020/2021. The figures for the South West and England can be found at: <https://digital.nhs.uk/data-and-information/publications/statistical/patients-registered-at-a-gp-practice/march-2021>
2. Estimates of number of patients registered at a GP within the PCN were not available for 2018/19 at the time of writing
3. Number of pharmacies in England and South West England in 2020/21 are taken from Supporting Tables from NHSBSA found at: <https://www.nhsbsa.nhs.uk/statistical-collections/general-pharmaceutical-services-england/general-pharmaceutical-services-england-201516-202021>
4. All pharmacy numbers include both community pharmacies and DACs

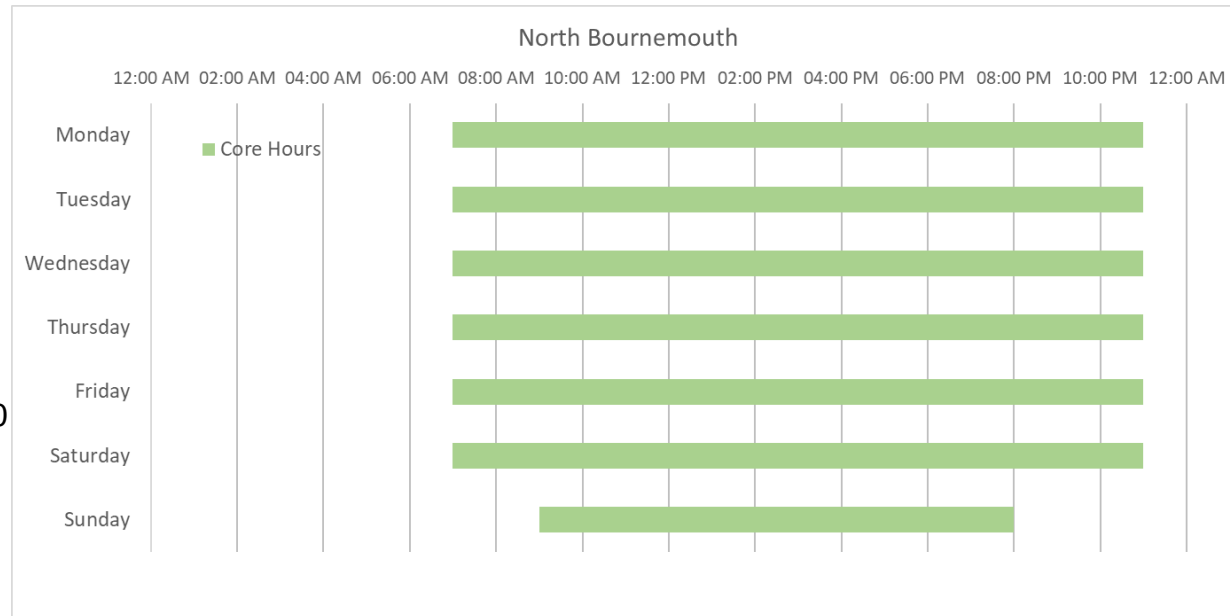


# Pharmacy Opening Times

## Access to the essential services (core plus supplementary opening hours)

- 5 pharmacies are open 7 days a week
- 13 pharmacies are open on Monday to Saturday only
- 6 pharmacies are open Monday to Friday only
- 3 pharmacies are open before 8 a.m. every day from Monday to Friday
- 5 pharmacies are open until after 6.30 p.m. every day from Monday to Friday

The chart shows the earliest opening hours and the latest closing hours for the North Bournemouth area. All open periods in this PCN are covered under core hours.



# Access to Services

## **Access to Medicines Use Review (MUR)**

Based on data for the first 9 months of the 2021/22 financial year, 0 MURs were carried out in North Bournemouth as the service has been decommissioned. This is compared to 1,976 MURs in 2020/21 and 8,260 MURs in 2018/19.

## **Access to New Medicines Service (NMS)**

20 pharmacies in North Bournemouth had NMS accreditation as of May 2022. Over the first 9-month period of 2021/22, 3,232 NMSs were undertaken. This is compared to the whole of 2020/21 where a total of 2,575 NMSs were undertaken.

## **Access to the 'on demand availability of specialist medicines' enhanced service**

As of May 2022, no pharmacies in North Bournemouth provided the specialist medicines advanced service.

## **Access to dispensing of appliances**

Data for this were unavailable at the time of writing.

## **Influenza vaccination advanced service**

21 pharmacies in North Bournemouth delivered the influenza vaccination advanced service as of May 2022. A total of 12,142 vaccinations were given according to the NHSBSA's Advanced Flu Vaccination Service report dataset during the 2021/22 flu season in North Bournemouth locality pharmacies matched with the Dorset STP influenza report pharmacies.

## **Stoma appliance customisation advanced service**

Six pharmacies in North Bournemouth provided stoma customisation as of May 2022, with a total of 3,780 stoma customisations in the first 9 months of 2021/22. In comparison, in 2018/19 a total of 7,248 stoma customisations were performed.

## **Appliance use review (AUR) advanced service**

There is one dispensing appliance contractor in North Bournemouth that provides this service (Fittleworth Medical on Victoria Park Road) and in the first 9 months of 2021/22, there were 4 AURs. This compares to 0 AURs in 2020/21 and to 141 AURs in 2018/19.



# Access to Services

## Other services (as of May 2022)

- 1 pharmacy provided the Hepatitis-C Antibody Testing Service
  - Day Lewis Pharmacy, Gillett Road
- 13 pharmacies provided the Hypertension Case-Finding Service
- 19 pharmacies delivered the Urgent Repeat Medicines Service
- 5 pharmacies provided the Stop Smoking Service
  - Castle Lane Pharmacy, Castle Lane West
  - Rowlands Pharmacy, Sopwith Crescent
  - Day Lewis Pharmacy, Anchor Road
  - Winton Pharmacy, Wimborne Road
  - Parley Cross Pharmacy, New Road



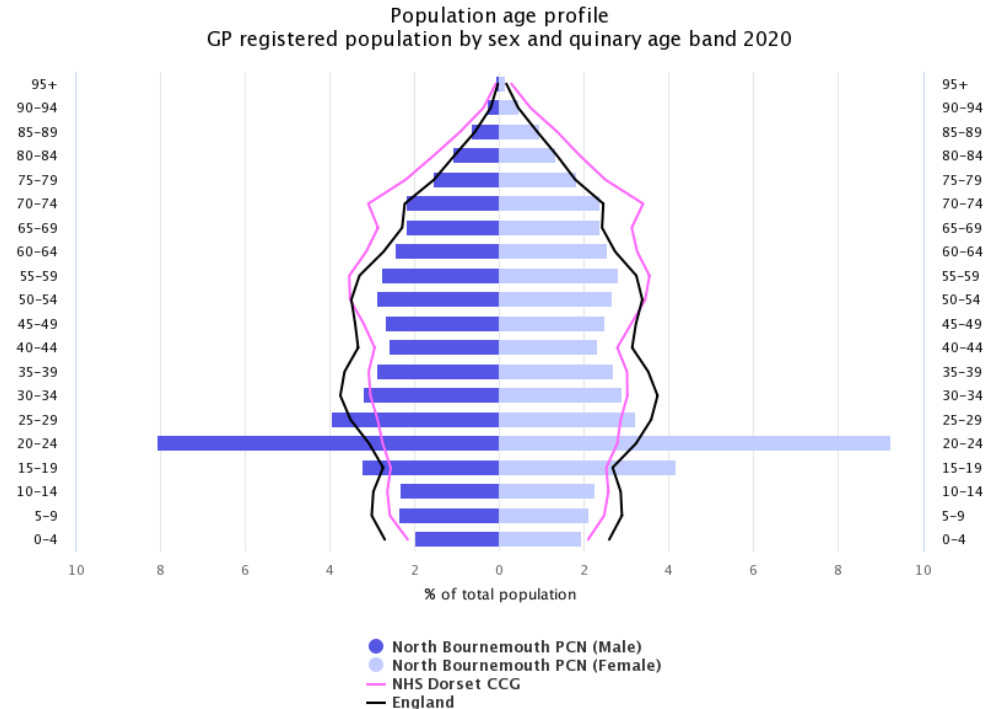


# Demographics

The population age profile shows that there are approximately 53,500 people registered at GP practices in North Bournemouth PCN (26,300 males and 27,200 females).

Compared to the Dorset ICS average, North Bournemouth has a higher proportion of people aged under 18 and a higher proportion of people aged 65 & over.

North Bournemouth has a much greater proportion of 20-24 year-olds than both the Dorset ICS and national averages due to the location of Bournemouth University.



Source: National General Practice Profiles 2020



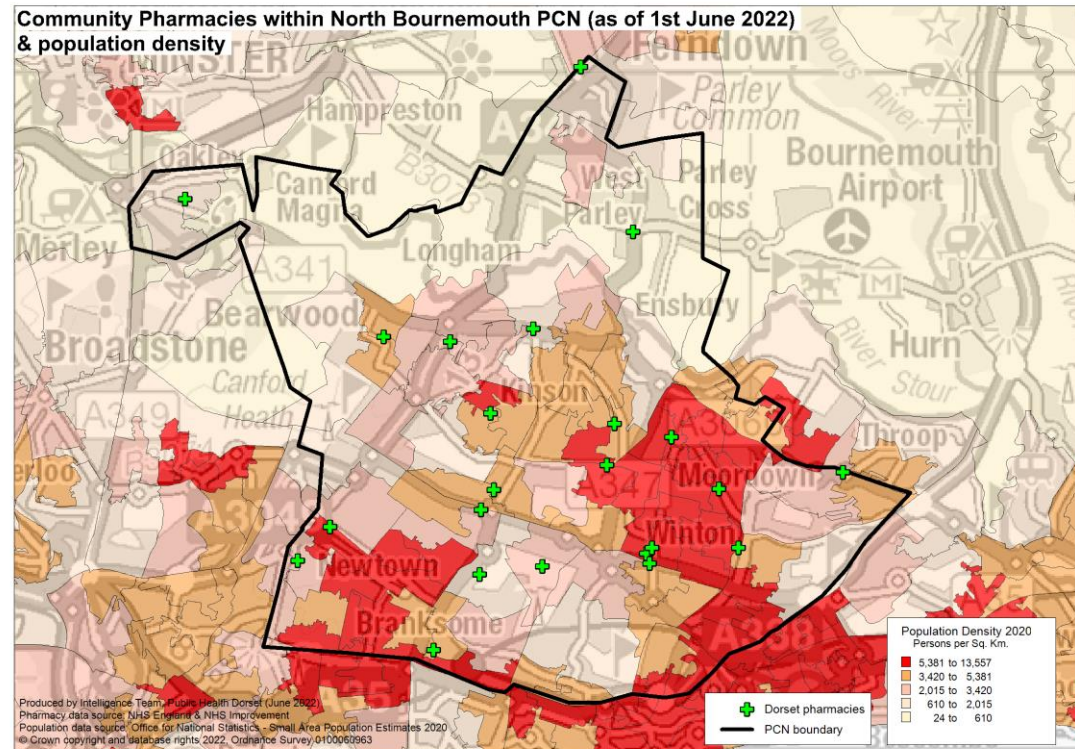
# Demographics

The area covered by the PCN is largely urban with the highest population density around Branksome, Alderney, Kinson, Moordown and Winton.

Over the next 3 years from 2022-25 projections suggest the population of the BCP area overall will increase by 2.5 thousand (0.6%).

This growth is driven by increases in the population aged over 65, with the number of children and young people (aged 0-16) projected to decrease.

The number of over 65s is projected to increase by almost 3.8 thousand (4%) to 2025, compared to a small decrease of around 1.5 thousand of children and young people. The working age population is forecast to remain roughly unchanged. By 2025 those aged 65+ will account for 23% of the overall population.



# Housing

To understand any increases in demand for services based on planned housing developments, planning applications with consent to build to 2025 in BCP and 2026 in Dorset have been analysed. Postcodes (or the nearest existing postcode to the development site) have been matched to LSOAs and then PCN networks.

This gives a realistic picture of housing growth within the PCN. The net level of development for this PCN area is approximately 2,307 dwellings. This is about 12% of the total net housing development for BCP and Dorset.

In this PCN the development will predominantly be seen in 2 areas – Bournemouth Central (658) particularly around the St Peter's area and Merley and Bearwood (636) particularly in the Magna Road area. There is also some development of note in West Parley (296) around Parley Cross.

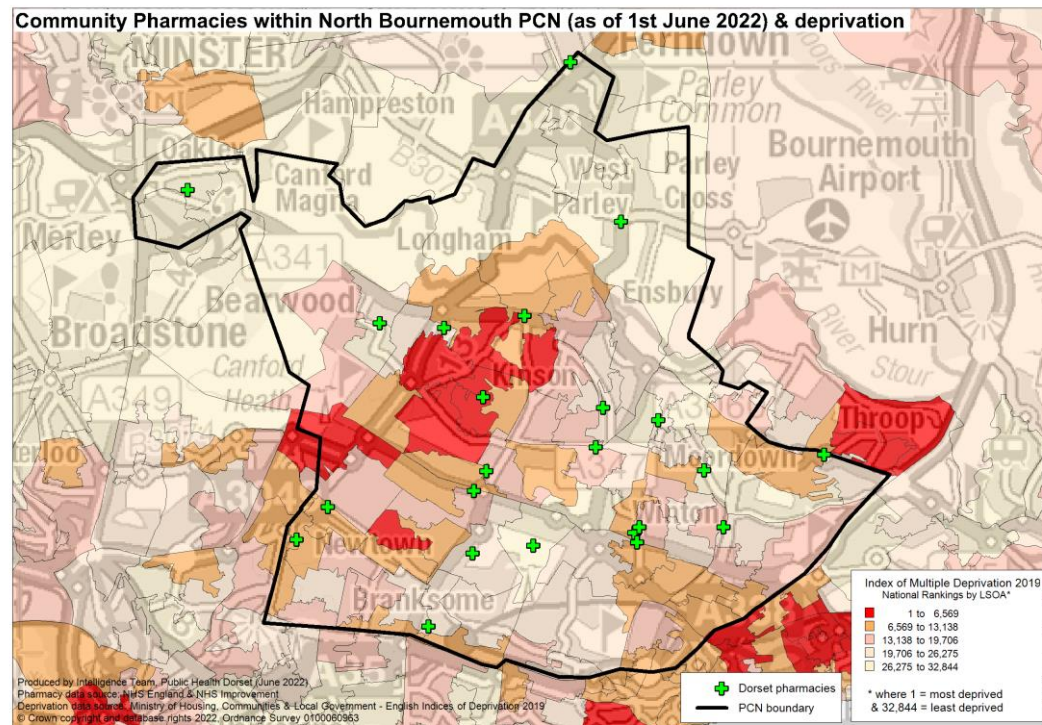


# Deprivation

North Bournemouth is one of the more deprived PCNs within the Dorset ICB area with an average IMD 2019 Score of 19.3.

Eight of the lower super output areas (LSOAs) in North Bournemouth are amongst the worst 20% in England and a further 27 are amongst the 40% most deprived.

Deprivation is concentrated in areas such as Alderney, West Howe and Kinson.

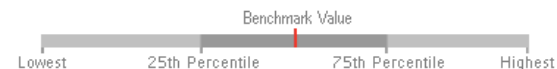


# Health and Wider Determinants

To understand the health needs and wider determinants of health in the PCN, the spine chart below visualises the data on a table of indicators and for each one it highlights whether the value is lower or higher benchmarked to national rates. The grey bar shows the range between the lowest or highest areas in England.

● Lower ● Similar ● Higher ○ Not applicable

Recent trends: — Could not be calculated → No significant change ↑ Increasing ↓ Decreasing



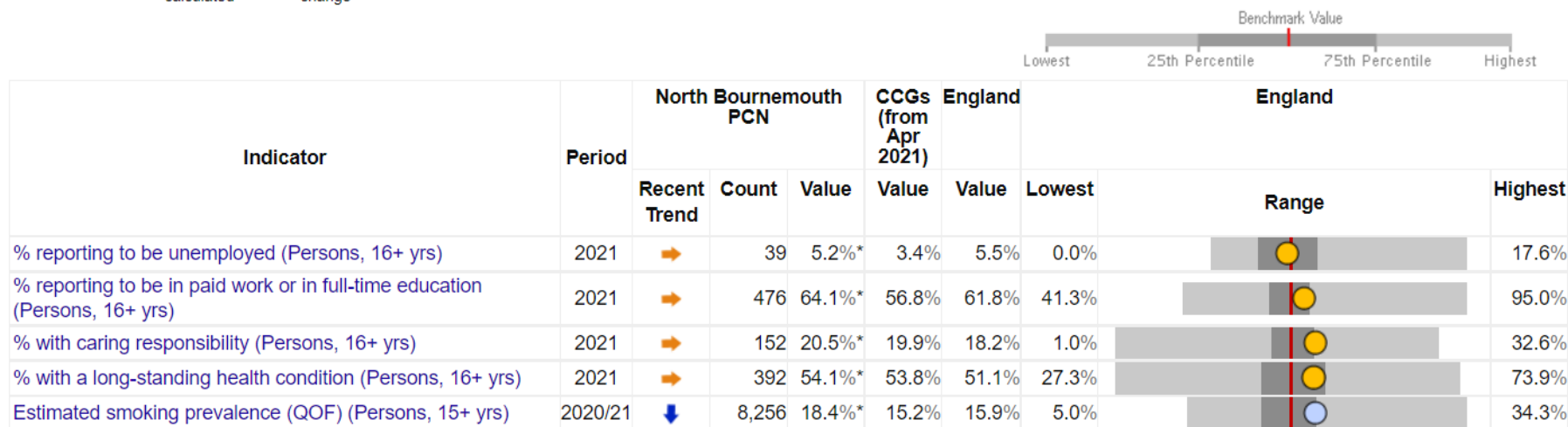
Indicator	Period	North Bournemouth PCN			CCGs (from Apr 2021)	England		England		
		Recent Trend	Count	Value	Value	Value	Lowest	Range	Highest	
Cancer: QOF prevalence (all ages) (Persons, All ages)	2020/21	↑	1,691	3.3%*	4.5%	3.2%	0.2%			6.7%
CHD: QOF prevalence (all ages) (Persons, All ages)	2020/21	↑	1,836	3.5%*	4.2%	3.0%	0.0%			6.5%
Heart Failure: QOF prevalence (all ages) (Persons, All ages)	2020/21	↑	482	0.9%*	1.2%	0.9%	0.0%			3.5%
Atrial fibrillation: QOF prevalence (Persons, All ages)	2020/21	↑	1,105	2.1%*	3.1%	2.0%	0.0%			4.5%
Stroke: QOF prevalence (all ages) (Persons, All ages)	2020/21	↑	1,068	2.1%*	2.5%	1.8%	0.0%			3.8%
Hypertension: QOF prevalence (all ages) (Persons, All ages)	2020/21	↑	6,425	12.4%*	15.9%	13.9%	0.1%			24.3%
COPD: QOF prevalence (all ages) (Persons, All ages)	2020/21	↑	1,192	2.3%*	2.2%	1.9%	0.0%			4.7%
Asthma: QOF prevalence (6+ yrs) (Persons, 6+ yrs)	2020/21	—	3,501	7.1%*	7.3%	6.4%	2.0%			9.3%
Diabetes: QOF prevalence (17+) (Persons, 17+ yrs)	2020/21	↑	2,952	6.7%*	6.9%	7.1%	0.3%			15.6%
Obesity: QOF prevalence (18+) (Persons, 18+ yrs)	2020/21	→	2,821	6.5%*	6.6%	6.9%	0.4%			19.4%
Depression: QOF incidence (18+) - new diagnosis (Persons, 18+ yrs)	2020/21	↓	407	0.9%*	1.1%	1.4%	0.2%			5.6%
Mental Health: QOF prevalence (all ages) (Persons, All ages)	2020/21	→	512	0.99%*	1.00%	0.95%	0.19%			2.36%
Dementia: QOF prevalence (all ages) (Persons, All ages)	2020/21	→	323	0.6%*	1.0%	0.7%	0.0%			2.2%



# Health and Wider Determinants

● Lower ● Similar ● Higher ○ Not applicable

Recent trends: — Could not be calculated → No significant change ↑ Increasing ↓ Decreasing



Source: National General Practice Profiles, accessed 2022



# Health and Wider Determinants

Local Health provides evidence of inequalities within local areas aggregated to represent North Bournemouth PCN. The spine chart below visualises the data and for each indicator it highlights whether the value is significantly different to national rates using a 95% confidence interval.

