

Pharmaceutical Needs Assessment: Poole Central Primary Care Network Draft Profile



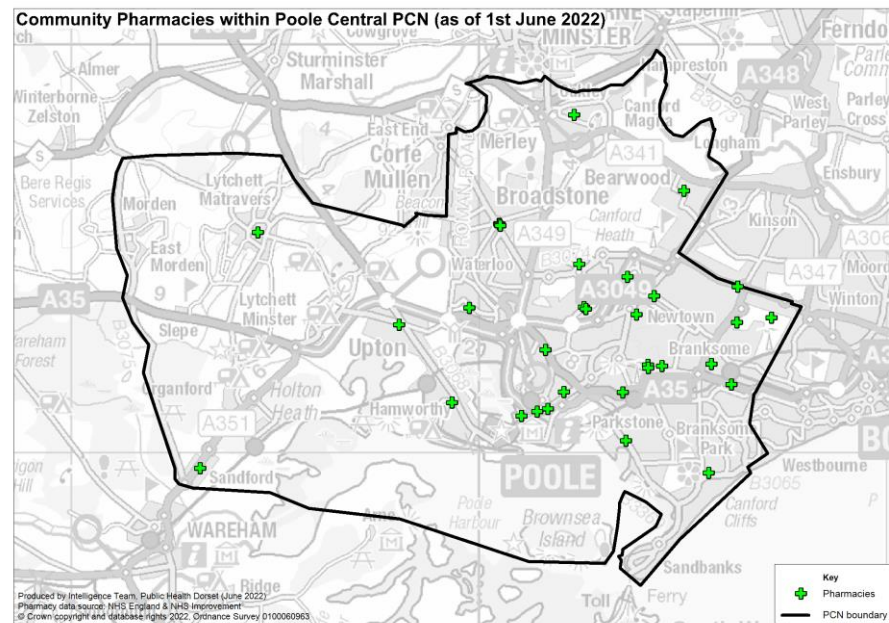
Introduction

Poole Central PCN has no gaps and is predominately in BCP Council but some is within Dorset Council. It is largely urban with a higher than proportion of younger aged people compared to the national average. The PCN has lower levels of deprivation with six areas within the 20% most deprived in England. Housing growth will be seen in Poole Town and Hamworthy, Bearwood, Merley and Parkstone, provided these developments are completed.

An analysis of health and the wider determinants of health highlights poor outcomes in coronary heart disease, heart failure, atrial fibrillation, stroke, hypertension, COPD, asthma, diabetes, smoking prevalence, emergency hospital admissions for heart attacks, hip fractures, hospital stays for self-harm and self-reported limiting long-term illness.

There are currently 33 pharmacies within the PCN as of June 2022. The following headings have been used to describe the locality in more detail:

- Number of pharmacies, openings hours & services
- Demographics
- Housing
- Deprivation
- Health and Wider Determinants



Warning: The geographies within this PCN area can be in the catchment of multiple PCN boundaries. Therefore the information contained within these profiles should not be aggregated or compared with other profiles as this could lead to misleading interpretations.



Number of Pharmacies

There are currently 33 pharmacies in Poole Central as of June 2022. Of these, 24 pharmacies are owned by national pharmacy chains:

- 6 by Boots Pharmacy
- 6 by Rowlands Pharmacy
- 5 by Lloyds Pharmacy
- 3 by Day Lewis Pharmacy
- 2 by Tesco Pharmacy
- 1 by Asda Pharmacy
- 1 by Avicenna Pharmacy

•There are 9 pharmacies that are owned by other providers. There are five 100-hour pharmacies as of June 2022:

- Tesco Pharmacy on Yarrow Road
- Tesco Pharmacy on Poole Road
- Asda Pharmacy on West Quay Road
- Canford Heath Pharmacy on Mitchell Road
- Wallisdown Pharmacy on Wallisdown Road



Number of Pharmacies

There are twenty-eight 40-hour pharmacies. There are 31 pharmacies that are Community Pharmacist Consultation Service (CPCS) accredited, providing a total of 1,182 CPCS consultations in the first 9 months of 2021/22. In addition, all pharmacies have access to the Electronic Prescription Service (EPS).

There is one distance-selling pharmacy (AutoMeds Pharmacy on Ringwood Road), no pharmacies with local pharmaceutical services contracts and no dispensing appliance contractors as of June 2022.

Since the last PNA was published, two pharmacies have closed (Rowlands Pharmacy on Madeira Road and Rowlands Pharmacy on High Street) and no new pharmacies have opened in Poole Central.

The number of items dispensed decreased by 1.7% between 2018/19 and 2020/21.

The number of items dispensed per head in 2020/21 was higher than the South West and England averages. The number of pharmacies per 100,000 population in 2020/21 in Poole Central was also higher than the South West and England averages (see next table).



Number of Pharmacies

Year	GP patients	Number of pharmacies	Pharmacies per 100,000 patients	Number of items dispensed	Items dispensed per patient
2018/19	-	35	-	2,999,847	-
2019/20	64,483	34	49.6	3,077,561	47.7
2020/21	65,169	33	47.6	2,948,884	45.2
2021/22 (9 months)	66,443	33	46.7	2,205,131	-
South West 2020/21	5,917,594	1,065	18.0	95,447,553	16.1
England 2020/21	60,650,740	11,748	19.4	1,016,769,042	16.8

Notes:

1. The column GP patients is based on estimates of number of patients registered with a GP in this PCN. The estimates for each financial year are taken in March. For example, for the number of patients registered with a GP in March 2021 is taken as the population estimate for financial year 2020/2021. The figures for the South West and England can be found at: <https://digital.nhs.uk/data-and-information/publications/statistical/patients-registered-at-a-gp-practice/march-2021>
2. Estimates of number of patients registered at a GP within the PCN were not available for 2018/19 at the time of writing
3. Number of pharmacies in England and South West England in 2020/21 are taken from Supporting Tables from NHSBSA found at: <https://www.nhsbsa.nhs.uk/statistical-collections/general-pharmaceutical-services-england/general-pharmaceutical-services-england-201516-202021>
4. All pharmacy numbers include both community pharmacies and DACs

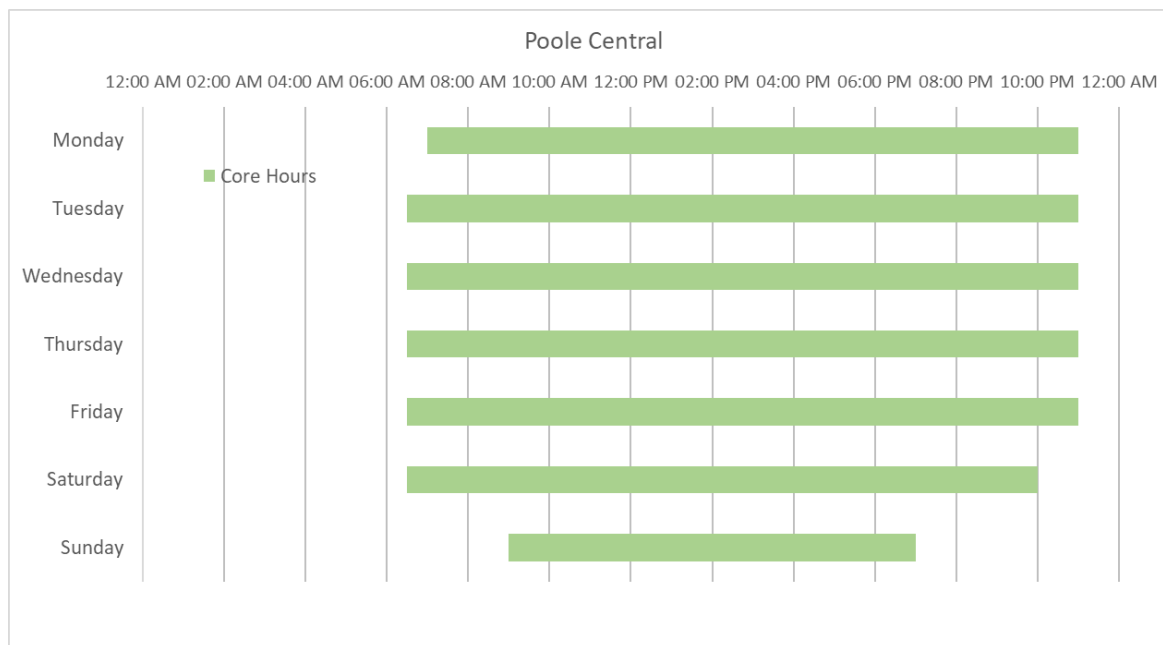


Pharmacy Opening Times

Access to the essential services (core plus supplementary opening hours)

- 7 pharmacies are open 7 days a week
- 18 pharmacies are open on Monday to Saturday only
- 8 pharmacies are open Monday to Friday only
- 2 pharmacies are open before 8 a.m. every day from Monday to Saturday
- 6 pharmacies are open until after 6.30 p.m. every day from Monday to Friday

The chart shows the earliest opening hours and the latest closing hours for the Poole Central area. All opening periods are covered by core hours.



Access to Services

Access to Medicines Use Review (MUR)

Based on data for the first 9 months of the 2021/22 financial year, 0 MURs were carried out in Poole Central as the service has been decommissioned. This is compared to 2,893 MURs in 2020/21 and 11,042 MURs in 2018/19.

Access to New Medicines Service (NMS)

There are 33 pharmacies in Poole Central that had NMS accreditation as of May 2022. Over the first 9-month period of 2021/22, 4,919 NMSs were undertaken. This is compared to the whole of 2020/21 where a total of 3,867 NMSs were undertaken.

Access to the 'on demand availability of specialist medicines' enhanced service

As of May 2022, no pharmacies in Poole Central provided the specialist medicines advanced service.

Access to dispensing of appliances

Data for this were unavailable at the time of writing.

Influenza vaccination advanced service

30 pharmacies in Poole Central delivered the influenza vaccination advanced service as of May 2022. A total of 25,033 vaccinations were given according to the NHSBSA's Advanced Flu Vaccination Service report dataset during the 2021/22 flu season in Poole Central locality pharmacies matched with the Dorset STP influenza report pharmacies.

Stoma appliance customisation advanced service

Nine pharmacies in Poole Central provided stoma customisation as of May 2022, with a total of 20 stoma customisations. In comparison, in 2018/19 a total of 70 stoma customisations were performed.



Access to Services

Appliance use review (AUR) advanced service

There is one pharmacy in Poole Central that provides this service (Rowlands Pharmacy on Wimborne Road), however, in the first 9 months of 2021/22, there were 0 AURs. This compares to 12 AURs in 2020/21 and to 6 AURs in 2018/19.

Other services (as of May 2022)

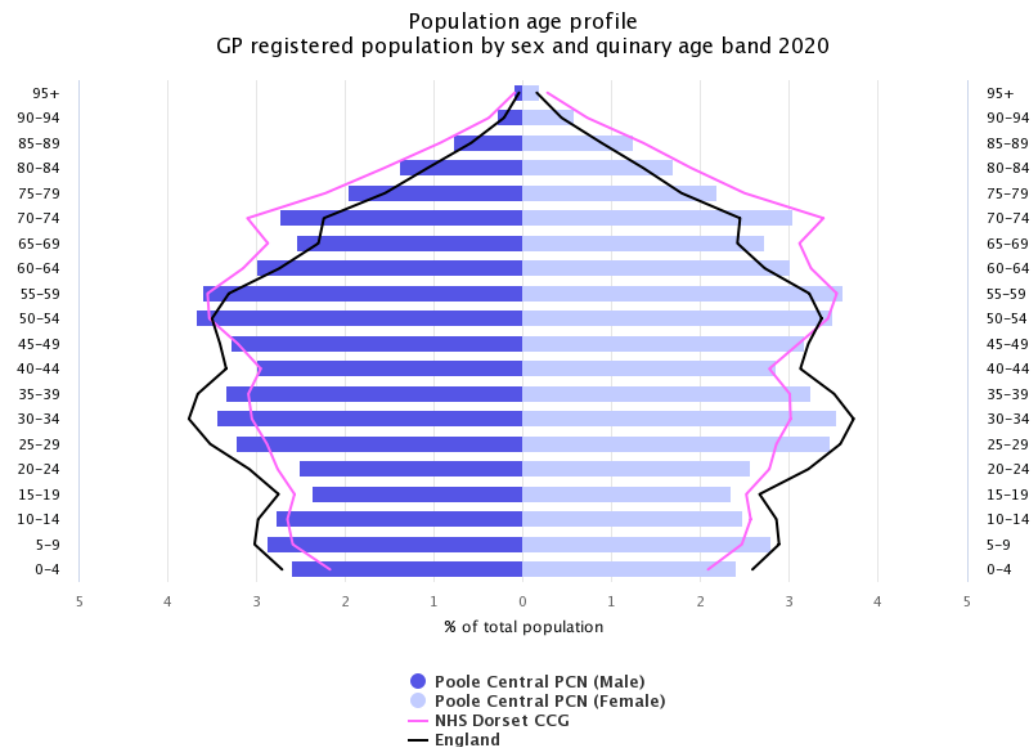
- Two pharmacies provided the Hepatitis-C Antibody Testing Service
 - Canford Heath Pharmacy on Mitchell Road
 - Day Lewis Pharmacy on Gillett Road
- Fifteen pharmacies provided the Hypertension Case-Finding Service
- Twenty two pharmacies delivered the Urgent Repeat Medicines Service
- Five pharmacies provided the Stop Smoking Service
 - Automeds Pharmacy on Ringwood Road
 - Bryant Pharmacy, Ashley Road
 - Rowlands Pharmacy, Sopwith Crescent
 - Sandford Pharmacy, St Helen's Road
 - Lytchett Pharmacy, High Street



Demographics

The population age profile shows that there are approximately 64,600 people registered at GP practices in Poole Central PCN (31,900 males and 32,800 females).

Compared to the Dorset CCG and national average, Poole Central has a higher proportion of people aged under 18 and a lower proportion of people aged 65 & over.



Source: National General Practice Profiles 2020



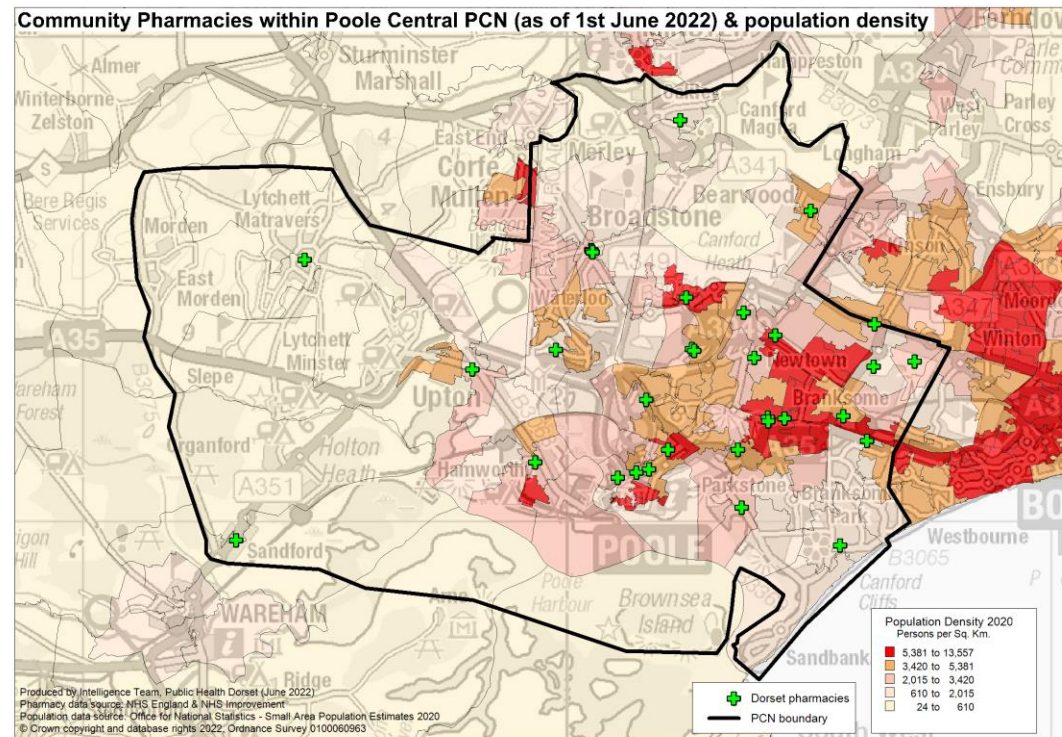
Demographics

The area covered by the PCN is largely urban with the highest population density around Poole Town, Branksome, Parkstone, Alderney, Hamworthy and Canford Heath.

Over the next 3 years from 2022-25 projections suggest the population of the BCP area overall will increase by 2.5 thousand (0.6%).

This growth is driven by increases in the population aged over 65, with the number of children and young people (aged 0-16) projected to decrease.

The number of over 65s are projected to increase by almost 3.8 thousand (4%) to 2025, compared to a small decrease of around 1.5 thousand of children and young people. The working age population is forecast to remain roughly unchanged. By 2025 those aged 65+ will account for 23% of the overall population.



Housing

To understand any increases in demand for services based on planned housing developments, planning applications with consent to build to 2025 in BCP and 2026 in Dorset have been analysed. Postcodes (or the nearest existing postcode to the development site) have been matched to LSOAs and then PCN networks.

This gives a realistic picture of housing growth within the PCN. There are significant housing developments within this PCN with the net level of development anticipated to be approximately 5,066 dwellings. This is approximately 27% of the total net housing development for BCP and Dorset.

The main areas of proposed development in the PCN are in Poole Town (1,223), Hamworthy (587), Bearwood and Merley (636) and Parkstone (398).

There are also notable developments in Wimborne just north of the PCN boundary (some LSOAs cross the boundary line so have been included in totals).

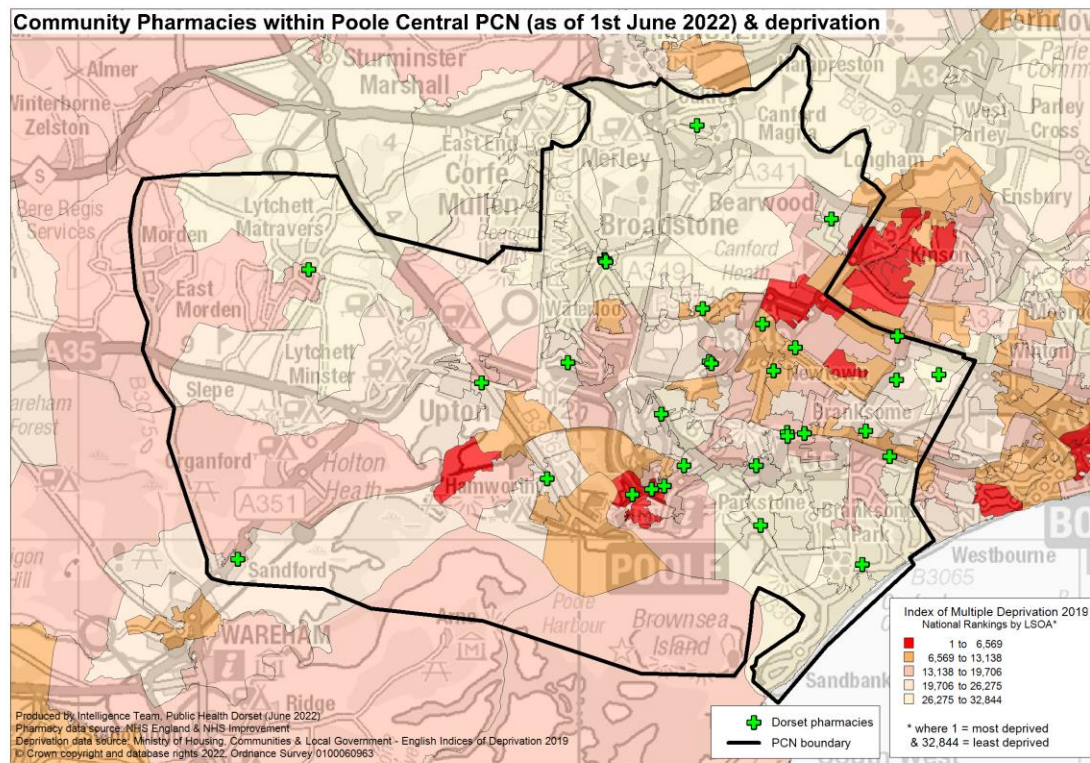


Deprivation

Poole Central PCN has an average IMD 2019 Score of 15.2.

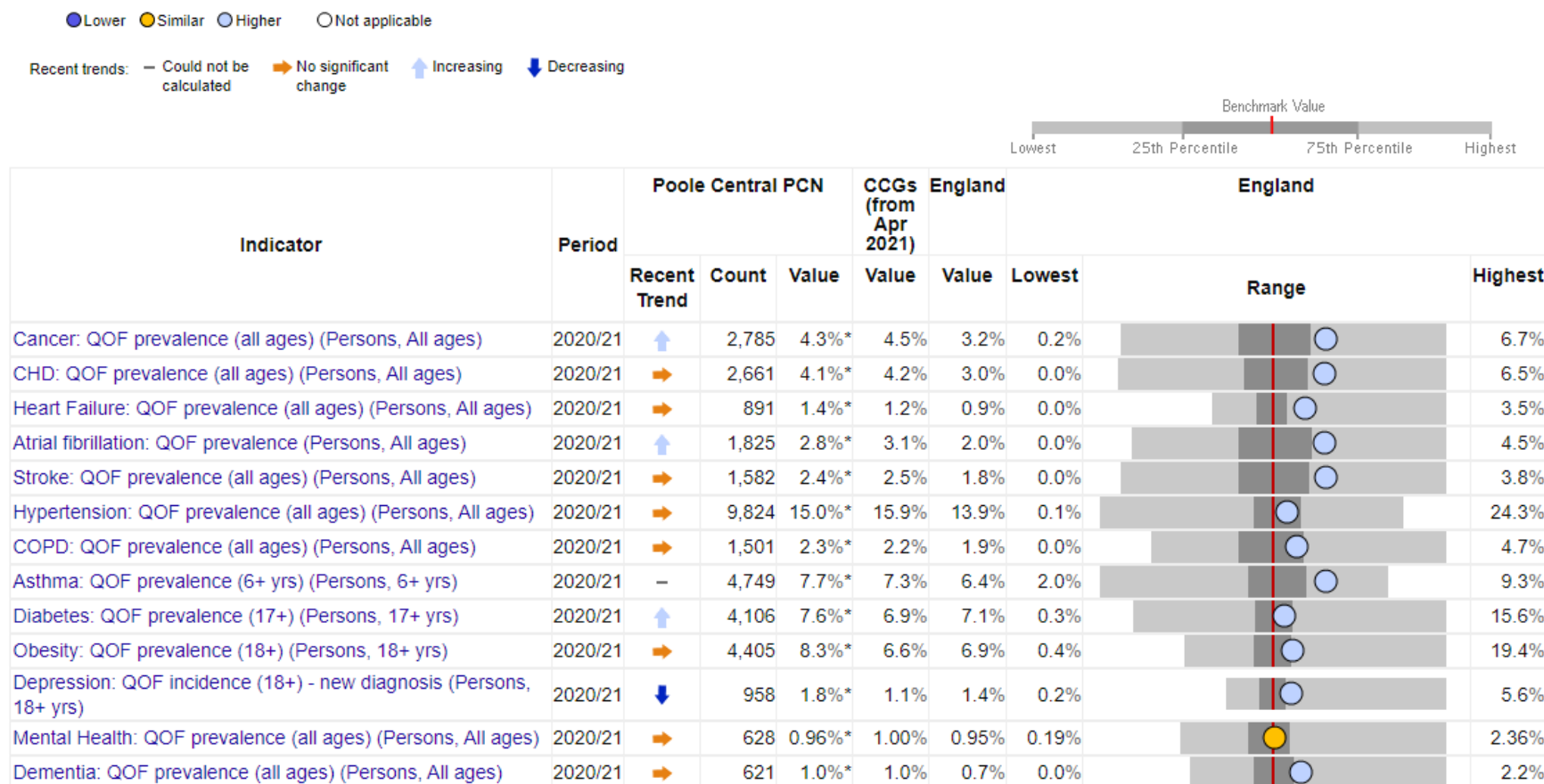
The highest levels of deprivation in Poole Central PCN are found around Turlin Moor, Poole Town, Alderney and West Howe.

Six super output areas (LSOAs) are amongst the 20% most deprived in England. A further 20 LSOAs are amongst the worst 40% deprived.

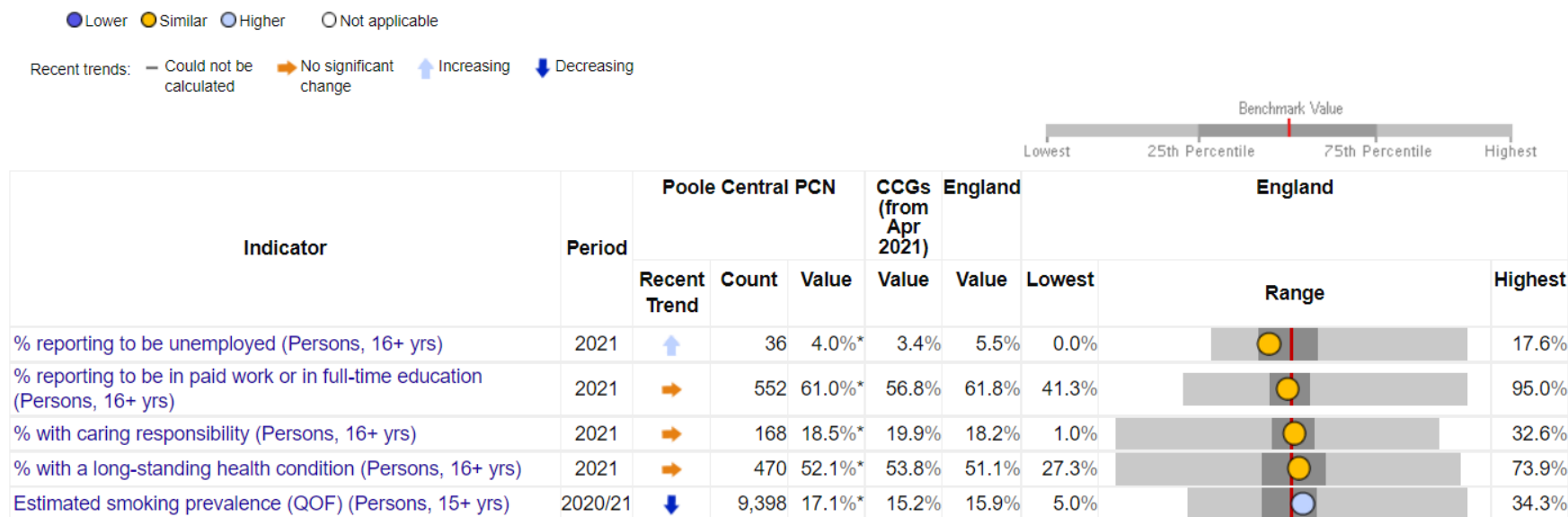


Health and Wider Determinants

To understand the health needs and wider determinants of health in the PCN, the spine chart below visualises the data on a table of indicators and for each one it highlights whether the value is lower or higher benchmarked to national rates. The grey bar shows the range between the lowest or highest areas in England.



Health and Wider Determinants



Source: National General Practice Profiles, accessed 2022



Health and Wider Determinants

Local Health provides evidence of inequalities within local areas aggregated to represent Poole Central PCN. The spine chart below visualises the data and for each indicator it highlights whether the value is significantly different to national rates using a 95% confidence interval.

