

Pharmaceutical Needs Assessment: Purbeck Primary Care Network Draft Profile



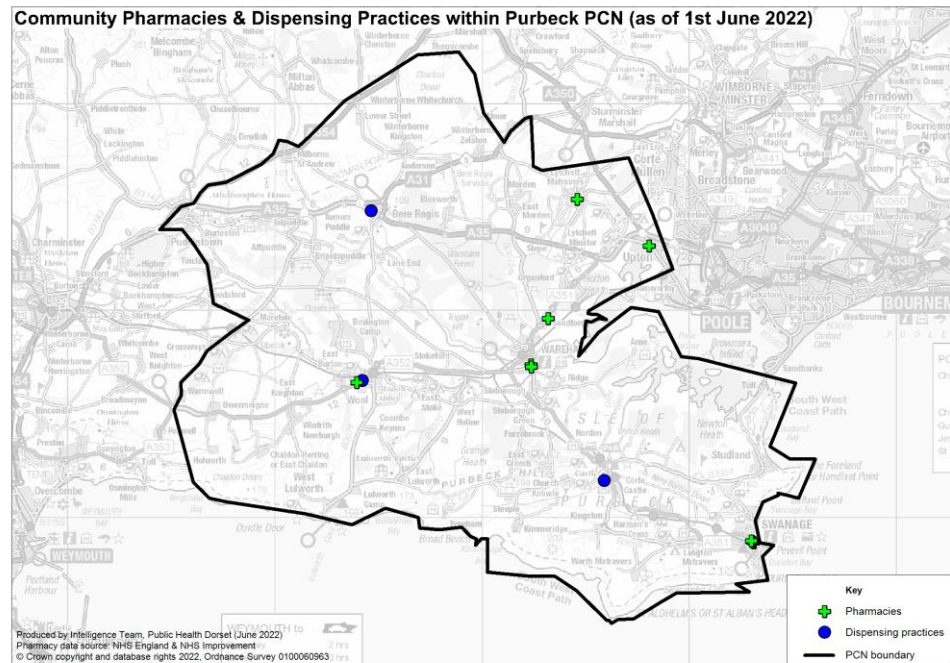
Introduction

Purbeck PCN has no gaps and is predominately in Dorset Council but some is within BCP Council. It is largely rural with a higher proportion of older people compared to both the Dorset and national average. The PCN has low levels of deprivation with one area amongst the worst 20% deprived in England. Housing growth will be seen Wool, Lytchett Matravers, Corfe Mullen and Crossways, provided these developments are completed.

An analysis of health and the wider determinants of health highlights poor outcomes in coronary heart disease, heart failure, atrial fibrillation, stroke, hypertension, COPD, asthma, diabetes, hospital stays for self-harm and self-reported limiting long-term illness.

There are currently nine pharmacies and three dispensing practices within the PCN as of June 2022. The following headings have been used to describe the locality in more detail:

- Number of pharmacies, openings hours & services
- Demographics
- Deprivation
- Housing
- Health and Wider Determinants



Warning: The geographies within this PCN area can be in the catchment of multiple PCN boundaries. Therefore the information contained within these profiles should not be aggregated or compared with other profiles as this could lead to misleading interpretations.



Number of Pharmacies

There are currently nine pharmacies in Purbeck as of June 2022. Seven pharmacies are owned by national pharmacy chains:

- 3 by Boots Pharmacy
- 2 by Bestway Pharmacy
- 1 by Rowlands Pharmacy
- 1 by Day Lewis Pharmacy

Two pharmacies are owned by other providers. There are no 100-hour pharmacies in Purbeck as of June 2022 and nine 40-hour pharmacies.

Eight pharmacies are Community Pharmacist Consultation Service (CPCS) accredited, providing a total of 146 CPCS consultations in the first 9 months of 2021/22. In addition, all pharmacies have access to the Electronic Prescription Service (EPS).



Number of Pharmacies

There are no distance-selling pharmacies, no pharmacies with local pharmaceutical services contracts and no dispensing appliance contractors as of June 2022.

Since the last PNA was published, no pharmacies have closed and no new pharmacies have opened in Purbeck.

The number of items dispensed increased by 0.2% between 2018/19 and 2020/21.

The number of items dispensed per head in 2020/21 was higher than the South West and England averages. The number of pharmacies per 100,000 population in 2020/21 in Purbeck was also higher than the South West and England averages (see next table).



Number of Pharmacies

Year	GP patients	Number of pharmacies	Pharmacies per 100,000 patients	Number of items dispensed	Items dispensed per patient
2018/19	-	9	-	753,002	-
2019/20	33,894	9	26.6	759,131	22.4
2020/21	33,976	9	26.5	754,449	22.2
2021/22 (9 months)	33,763	9	26.7	567,636	-
South West 2020/21	5,917,594	1,065	18.0	95,447,553	16.1
England 2020/21	60,650,740	11,748	19.4	1,016,769,042	16.8

Notes:

1. The column GP patients is based on estimates of number of patients registered with a GP in this locality. The estimates for each financial year are taken in March. For example, for the number of patients registered with a GP in March 2021 is taken as the population estimate for financial year 2020/2021. The figures for the South West and England can be found at: <https://digital.nhs.uk/data-and-information/publications/statistical/patients-registered-at-a-gp-practice/march-2021>
2. Estimates of number of patients registered at a GP within the PCN were not available for 2018/19 at the time of writing
3. Number of pharmacies in England and South West England in 2020/21 are taken from Supporting Tables from NHSBSA found at: <https://www.nhsbsa.nhs.uk/statistical-collections/general-pharmaceutical-services-england/general-pharmaceutical-services-england-201516-202021>
4. All pharmacy numbers include both community pharmacies and DACs

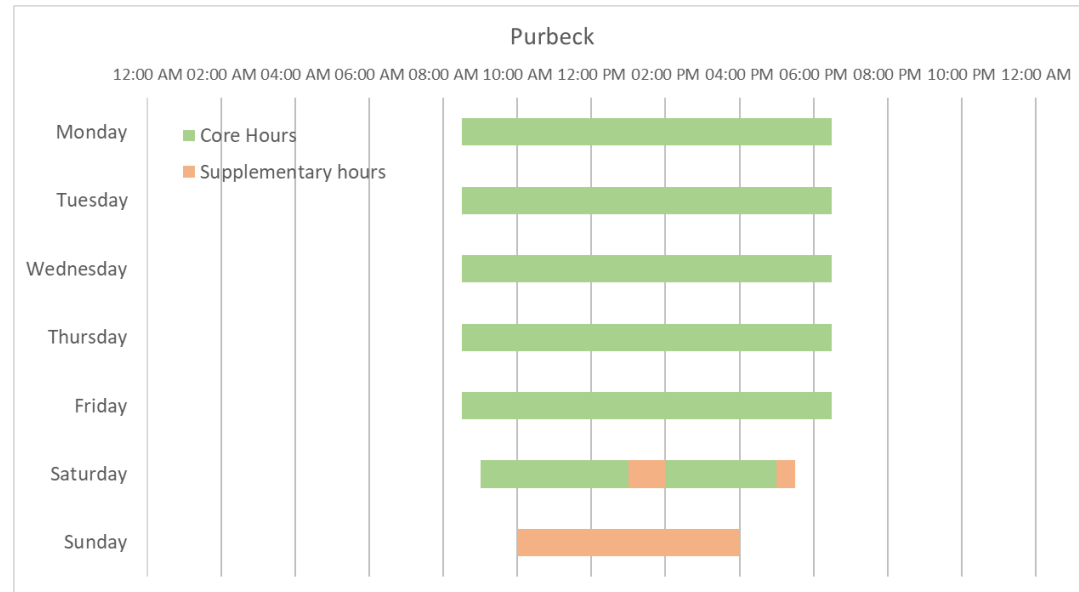


Pharmacy Opening Times

Access to the essential services (core plus supplementary opening hours)

- 1 pharmacy is open 7 days a week
- 4 pharmacies are open on Monday to Saturday only
- 4 pharmacies are open Monday to Friday only
- No pharmacies are open before 8 a.m. every day from Monday to Friday
- No pharmacies are open until after 6.30 p.m. every day from Monday to Friday

The following chart shows the earliest opening hours and the latest closing hours for the Purbeck area. All weekday opening is covered by core hours. At the weekend, small periods of Saturday and Sunday opening are covered by supplementary hours.



Access to Services

Access to Medicines Use Review (MUR)

Based on data for the first 9 months of the 2021/22 financial year, 0 MURs were carried out in Purbeck as the service has been decommissioned. This is compared to 944 MURs in 2020/21 and 3,120 MURs in 2018/19.

Access to New Medicines Service (NMS)

Nine pharmacies in Purbeck had NMS accreditation as of May 2022. Over the first 9-month period of 2021/22, there were 1,677 NMSs undertaken. This is compared to the whole of 2020/21 where a total of 1,289 NMSs were undertaken.

Access to the 'on demand availability of specialist medicines' enhanced service

As of May 2022, no pharmacies in Purbeck provided the specialist medicines advanced service.

Access to dispensing of appliances

Data for this were unavailable at the time of writing.

Influenza vaccination advanced service

All nine pharmacies in Purbeck delivered the influenza vaccination advanced service in as of May 2022. A total of 5,168 vaccinations were given according to the NHSBSA's Advanced Flu Vaccination Service report dataset during the 2021/22 flu season in Purbeck locality pharmacies matched with the Dorset STP influenza report pharmacies.

Stoma appliance customisation advanced service

One pharmacy in Purbeck provided stoma customisation as of May 2022 (Rowlands Pharmacy on Dorchester Road), with a total of 1 stoma customisation in the first 9 months of 2021/22. In comparison, in 2018/19 a total of 10 stoma customisations were performed.

Appliance use review (AUR) advanced service

There are no pharmacies Purbeck that provide this service.



Access to Services

Other services (as of May 2022)

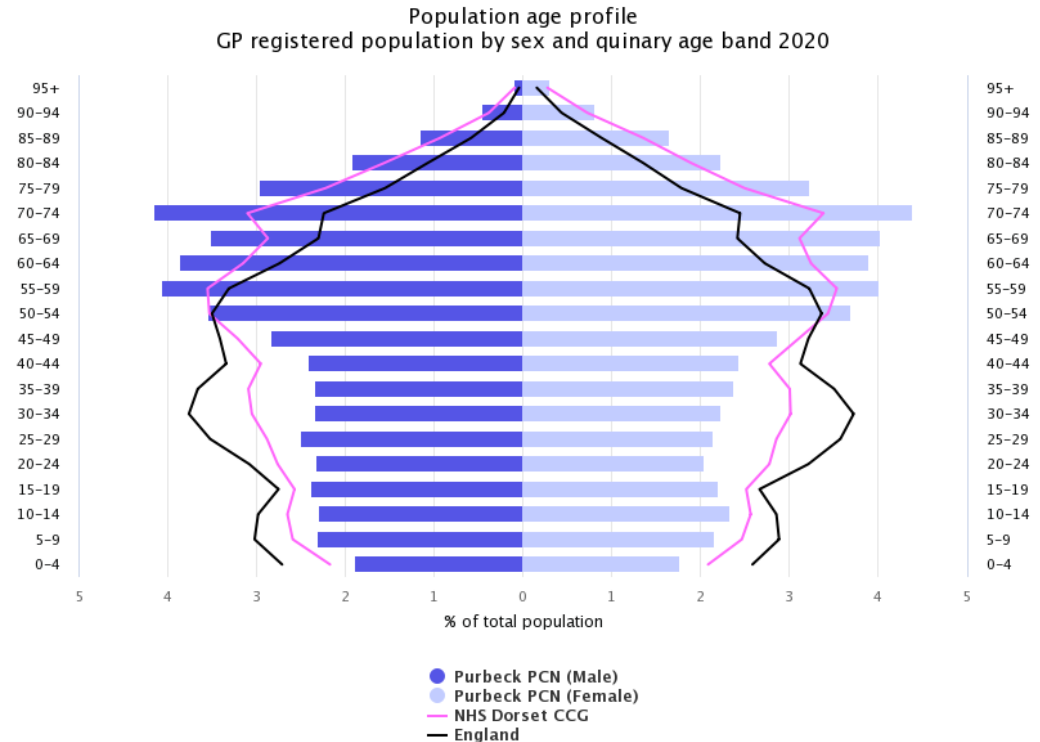
- No pharmacies provided the Hepatitis-C Antibody Testing Service
- Six pharmacies provided the Hypertension Case-Finding Service
 - Well (Bestway) Pharmacy at 22 Station Road
 - Sandford Pharmacy on St. Helen's Road
 - Lytchett Pharmacy on High Street, Lytchett Matravers
 - Well (Bestway) Pharmacy at 40 Station Road
 - Boots Pharmacy on Dorchester Road
 - Day Lewis Pharmacy, South Street
- Five pharmacies delivered the Urgent Repeat Medicines Service
 - Rowlands Pharmacy, Dorchester Road, Upton
 - Boots Pharmacy, Station Road
 - Boots Pharmacy, North Street
 - Boots Pharmacy, Dorchester Road, Wool
 - Day Lewis Pharmacy, South Street
- Four pharmacies provided the Stop Smoking Service
 - Well (Bestway) Pharmacy, 22 Station Road
 - Sandford Pharmacy, St. Helens Road
 - Lytchett Pharmacy, High Street
 - Well (Bestway) Pharmacy, 40 Station Road



Demographics

The population age profile shows that there are approximately 33,900 people registered at GP practices in Purbeck PCN (10,900 males and 11,600 females).

Compared to the Dorset CCG and national average, Purbeck has a lower proportion of people aged under 18 and a higher proportion of people aged 65 & over.



Source: National General Practice Profiles 2020



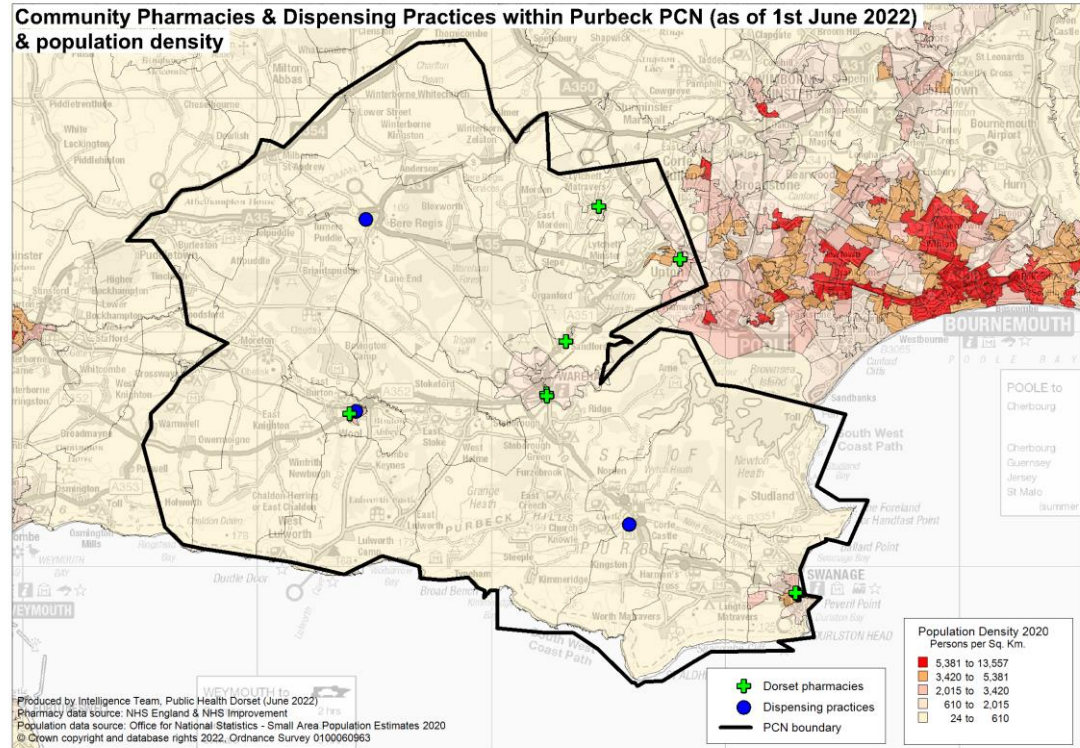
Demographics

The area covered by the PCN is largely rural with the highest population density around the towns of Wareham, Wool and Upton.

Over the next 3 years from 2022-25 projections suggest the population of Dorset overall will increase by 5.2 thousand (1.4%).

This growth is driven by increases in the population aged over 65, with the number of children and young people (aged 0-16) projected to decrease.

The number of over 65s are projected to increase by almost 7.1 thousand (6%) to 2025, compared to a small decrease of around 1 thousand children and young people aged 0-16. The working age population is forecast to remain roughly unchanged. By 2025 those aged 65+ will account for 32% of the overall population.



Housing

To understand any increases in demand for services based on planned housing developments, planning applications with consent to build to 2025 in BCP and 2026 in Dorset have been analysed. Postcodes (or the nearest existing postcode to the development site) have been matched to LSOAs and then PCN networks.

This gives a realistic picture of housing growth within the PCN. The net level of development for this PCN area is approximately 1568 dwellings. This is about 8% of the total net housing development for BCP and Dorset.

Development is generally across the PCN area however some notable areas are West Purbeck (334) particularly around Wool, Lytchett Matravers and Upton (293) and Corfe Mullen (154) particularly around Lytchett Matravers and Lytchett Minster, and Crossways (207) on the PCN boundary to the east.

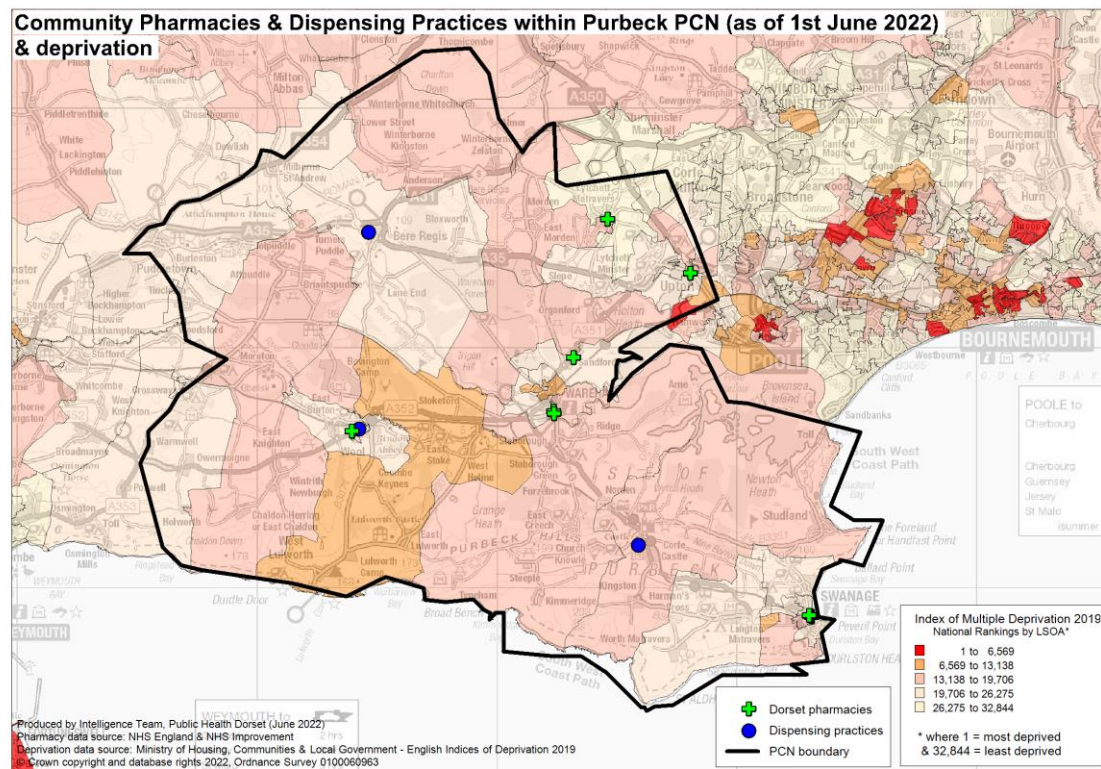


Deprivation

Purbeck PCN has an average IMD 2019 Score of 15.3.

One lower super output area (LSOA) covered by Purbeck PCN is amongst the 20% most deprived in England. This LSOA can be found in Turlin Moor.

Three LSOAs are in the 40% least deprived. In contrast, 20 LSOAs are in the 40% least deprived and three LSOAs are in the 20% least deprived.

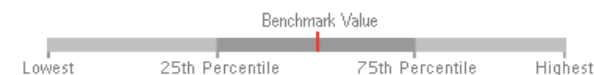


Health and Wider Determinants

To understand the health needs and wider determinants of health in the PCN, the spine chart below visualises the data on a table of indicators and for each one it highlights whether the value is lower or higher benchmarked to national rates. The grey bar shows the range between the lowest or highest areas in England.

● Lower ● Similar ● Higher ○ Not applicable

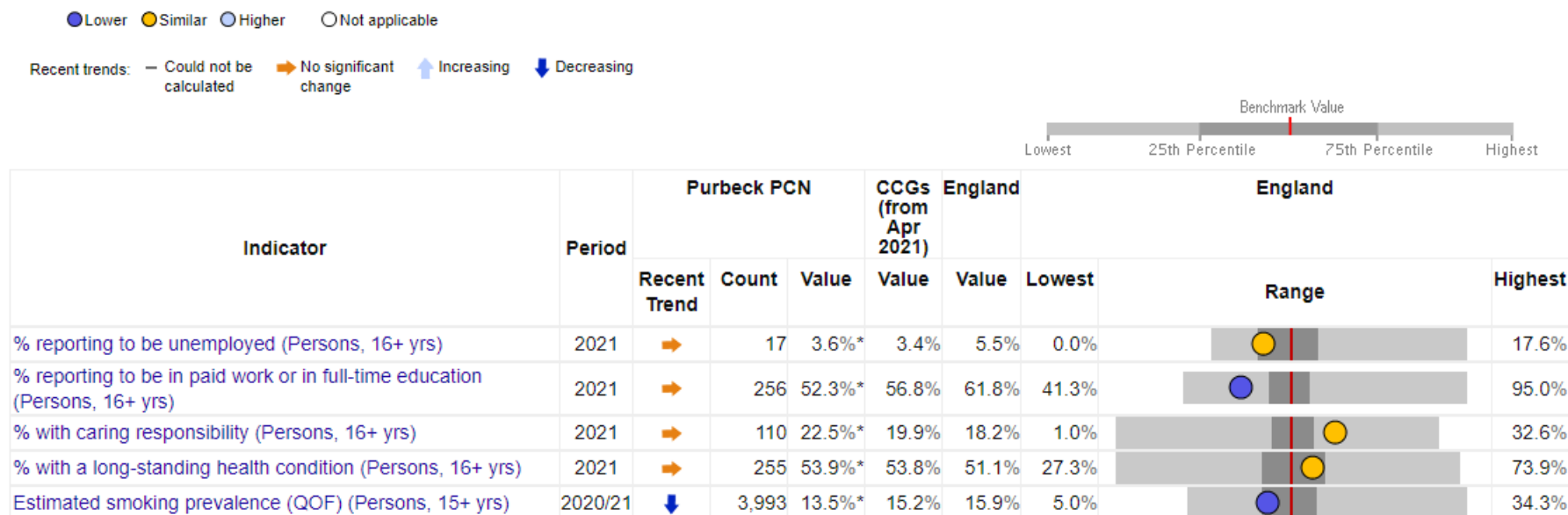
Recent trends: — Could not be calculated ➡ No significant change ⬆ Increasing ⬇ Decreasing



Indicator	Period	Purbeck PCN			CCGs (from Apr 2021)	England				
		Recent Trend	Count	Value		Value	Value	Lowest	Range	Highest
Cancer: QOF prevalence (all ages) (Persons, All ages)	2020/21	⬆	1,961	5.8%*	4.5%	3.2%	0.2%			6.7%
CHD: QOF prevalence (all ages) (Persons, All ages)	2020/21	➡	1,726	5.1%*	4.2%	3.0%	0.0%			6.5%
Heart Failure: QOF prevalence (all ages) (Persons, All ages)	2020/21	⬆	429	1.3%*	1.2%	0.9%	0.0%			3.5%
Atrial fibrillation: QOF prevalence (Persons, All ages)	2020/21	⬆	1,354	4.0%*	3.1%	2.0%	0.0%			4.5%
Stroke: QOF prevalence (all ages) (Persons, All ages)	2020/21	➡	1,004	3.0%*	2.5%	1.8%	0.0%			3.8%
Hypertension: QOF prevalence (all ages) (Persons, All ages)	2020/21	➡	6,506	19.2%*	15.9%	13.9%	0.1%			24.3%
COPD: QOF prevalence (all ages) (Persons, All ages)	2020/21	➡	1,004	3.0%*	2.2%	1.9%	0.0%			4.7%
Asthma: QOF prevalence (6+ yrs) (Persons, 6+ yrs)	2020/21	—	2,398	7.4%*	7.3%	6.4%	2.0%			9.3%
Diabetes: QOF prevalence (17+) (Persons, 17+ yrs)	2020/21	➡	2,242	7.7%*	6.9%	7.1%	0.3%			15.6%
Obesity: QOF prevalence (18+) (Persons, 18+ yrs)	2020/21	➡	1,719	6.0%*	6.6%	6.9%	0.4%			19.4%
Depression: QOF incidence (18+) - new diagnosis (Persons, 18+ yrs)	2020/21	➡	305	1.1%*	1.1%	1.4%	0.2%			5.6%
Mental Health: QOF prevalence (all ages) (Persons, All ages)	2020/21	➡	316	0.93%*	1.00%	0.95%	0.19%			2.36%
Dementia: QOF prevalence (all ages) (Persons, All ages)	2020/21	➡	419	1.2%*	1.0%	0.7%	0.0%			2.2%



Health and Wider Determinants



Source: National General Practice Profiles, accessed 2022



Health and Wider Determinants

Local Health provides evidence of inequalities within local areas aggregated to represent Purbeck PCN. The spine chart below visualises the data and for each indicator it highlights whether the value is significantly different to national rates using a 95% confidence interval.

