

Pharmaceutical Needs Assessment: Shore Medical Primary Care Network Profile September 2022



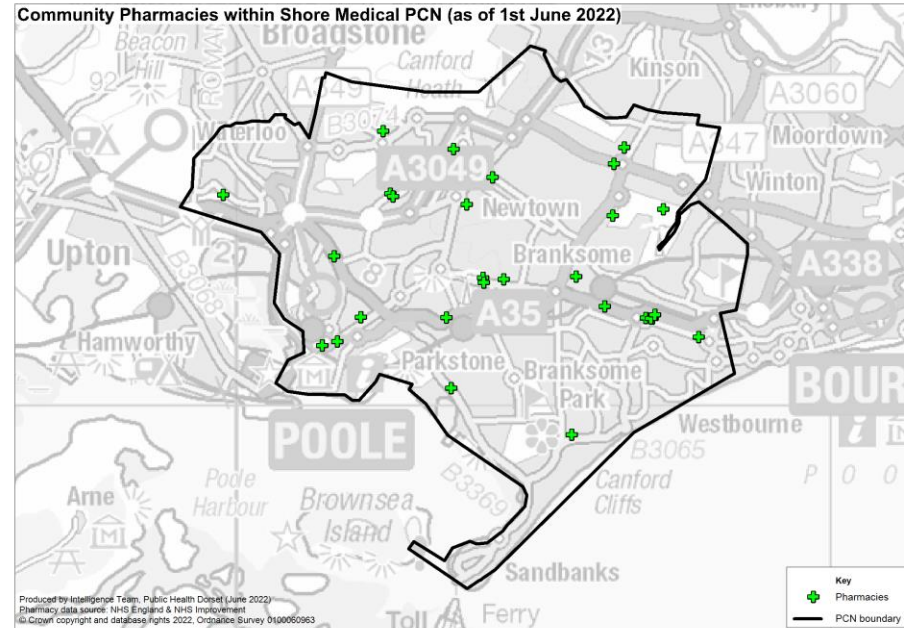
Introduction

Shore Medical PCN has no gaps and is entirely in BCP Council. It is largely urban with a higher proportion of older people aged over 75 compared to the national average. The PCN has a mix of both deprived and affluent areas. Housing growth will be seen in Poole Town, Westcliff, Westbourne and Parkstone provided these developments are completed.

An analysis of health and the wider determinants of health highlights poor outcomes for smoking prevalence, emergency hospital admissions for coronary heart disease, heart attacks, stroke, hip fractures, hospital stays for self-harm, alcohol related harm and self-reported limiting long-term illness.

There are currently 29 pharmacies within the PCN as of June 2022. The following headings have been used to describe the PCN in more detail:

- Number of pharmacies, openings hours & services
- Demographics
- Housing
- Deprivation
- Health and Wider Determinants



Warning: The geographies within this PCN area can be in the catchment of multiple PCN boundaries. Therefore the information contained within these profiles should not be aggregated or compared with other profiles as this could lead to misleading interpretations.



Number of Pharmacies

There are currently 29 pharmacies in Shore Medical as of June 2022. Of these, 19 pharmacies are owned by national pharmacy chains:

- 5 by Boots Pharmacy
- 4 by Lloyds Pharmacy
- 4 by Rowlands Pharmacy
- 3 by Day Lewis Pharmacy
- 2 by Tesco Pharmacy
- 1 by Avicenna Pharmacy

There are 10 pharmacies that are owned by other providers. There are five 100-hour pharmacies in Shore Medical as of June 2022:

- Tesco Pharmacy, Yarrow Road
- Tesco Pharmacy, Poole Road
- Poole Bay Pharmacy, Milburn Road
- Canford Heath Pharmacy, Mitchell Road
- Wallisdown Pharmacy, Wallisdown Road.



Number of Pharmacies

There are 24 40-hour pharmacies. There are 27 pharmacies that are Community Pharmacist Consultation Service (CPCS) accredited, providing a total of 1,032 CPCS consultations in the first 9 months of 2021/22. In addition, all pharmacies have access to the Electronic Prescription Service (EPS).

There is one distance-selling pharmacy (AutoMeds Pharmacy on Ringwood Road), no pharmacies with local pharmaceutical services contracts and no dispensing appliance contractors as of June 2022.

Since the last PNA was published, two pharmacies have closed (Rowlands Pharmacy on Madeira Road and Rowlands Pharmacy on High Street) and no new pharmacies have opened in Shore Medical.

The number of items dispensed decreased by 3.7% between 2018/19 and 2020/21.

The number of items dispensed per head in 2020/21 was higher than the South West and England averages. The number of pharmacies per 100,000 population in 2020/21 in Shore Medical was also higher than the South West and England averages (see next table).



Number of Pharmacies

Year	GP patients	Number of pharmacies	Pharmacies per 100,000 patients	Number of items dispensed	Items dispensed per patient
2018/19	-	31	-	2,619,547	-
2019/20	58,859	30	51.0	2,646,451	45.0
2020/21	58,917	29	49.2	2,521,833	42.8
2021/22 (9 months)	58,332	29	49.7	1,887,001	-
South West 2020/21	5,917,594	1,065	18.0	95,447,553	16.1
England 2020/21	60,650,740	11,748	19.4	1,016,769,042	16.8

Notes:

1. The column GP patients is based on estimates of number of patients registered with a GP in this locality. The estimates for each financial year are taken in March. For example, for the number of patients registered with a GP in March 2021 is taken as the population estimate for financial year 2020/2021. The figures for the South West and England can be found at: <https://digital.nhs.uk/data-and-information/publications/statistical/patients-registered-at-a-gp-practice/march-2021>
2. Estimates of number of patients registered at a GP within the PCN were not available for 2018/19 at the time of writing
3. Number of pharmacies in England and South West England in 2020/21 are taken from Supporting Tables from NHSBSA found at: <https://www.nhsbsa.nhs.uk/statistical-collections/general-pharmaceutical-services-england/general-pharmaceutical-services-england-201516-202021>
4. All pharmacy numbers include both community pharmacies and DACs

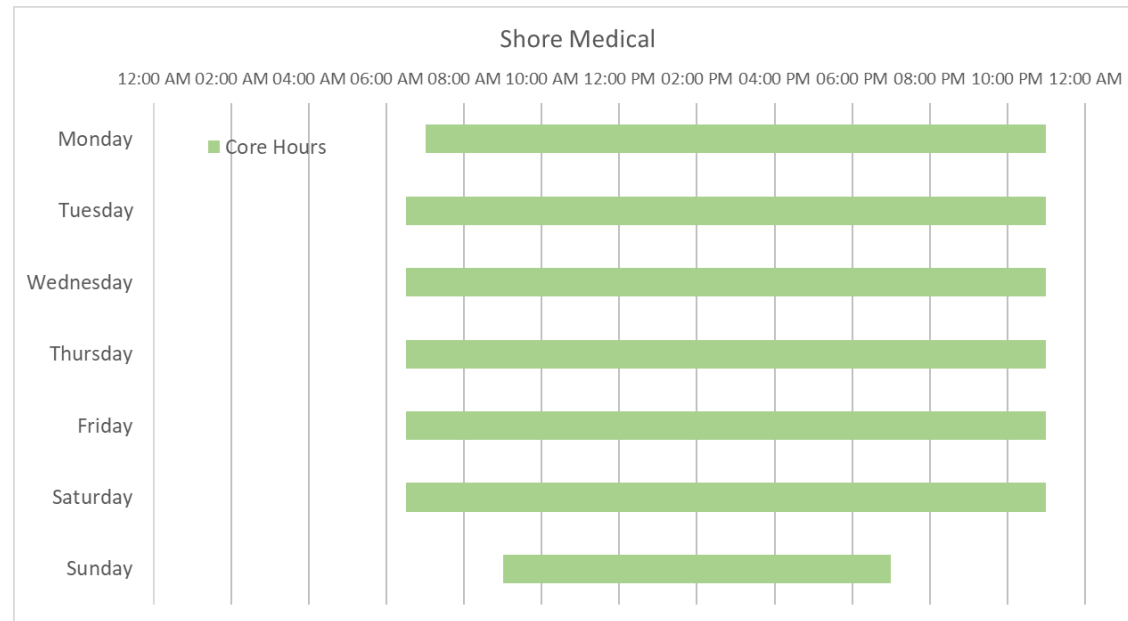


Pharmacy Opening Times

Access to the essential services (core plus supplementary opening hours)

- 7 pharmacies are open 7 days a week
- 15 pharmacies are open on Monday to Saturday only
- 7 pharmacies are open Monday to Friday only
- 3 pharmacies are open before 8 a.m. every day from Monday to Saturday
- 6 pharmacies are open until after 6.30 p.m. every day from Monday to Friday

The following chart shows the earliest opening hours and the latest closing hours for the Shore Medical area. All of the opening times are covered by core hours.



Access to Services

Access to Medicines Use Review (MUR)

Based on data for the first 9 months of the 2021/22 financial year, 0 MURs were carried out in Shore Medical as the service has been decommissioned. This is compared to 2,367 MURs in 2020/21 and 9,106 MURs in 2018/19.

Access to New Medicines Service (NMS)

There are 29 pharmacies in Shore Medical that have NMS accreditation as of May 2022. Over the first 9-month period of 2021/22, there were 4,109 NMSs undertaken. This is compared to the whole of 2020/21 where a total of 3,418 NMSs were undertaken.

Access to the 'on demand availability of specialist medicines' enhanced service

As of May 2022, no pharmacies in Shore Medical provided the specialist medicines advanced service.

Access to dispensing of appliances

Data for this were unavailable at the time of writing.

Influenza vaccination advanced service

26 pharmacies in Shore Medical delivered the influenza vaccination advanced service as of May 2022. A total of 23,486 vaccinations were given according to the NHSBSA's Advanced Flu Vaccination Service report dataset during the 2021/22 flu season in Shore Medical locality pharmacies matched with the Dorset STP influenza report pharmacies.

Stoma appliance customisation advanced service

Six pharmacies in Shore Medical provided stoma customisation as of May 2022:

- Rowlands Pharmacy, Wimborne Road
- Rowlands Pharmacy, Parkstone Road
- Rowlands Pharmacy, Northmead Drive
- Rowlands Pharmacy, Longfleet Road
- Lloyds Pharmacy, Rosemary Road
- Lloyds Pharmacy, Station Road

There was a total of 11 stoma customisations in the first 9 months of 2021/22. In comparison, in 2018/19 a total of 48 stoma customisations were performed.



Access to Services

Appliance use review (AUR) advanced service

There is one pharmacy in Shore Medical that provides this service (Rowlands Pharmacy on Wimborne Road); however, in the first 9 months of 2021/22, there were 0 AURs. This compares to 12 AURs in 2020/21 and to 0 AURs in 2018/19.

Other services (as of May 2022)

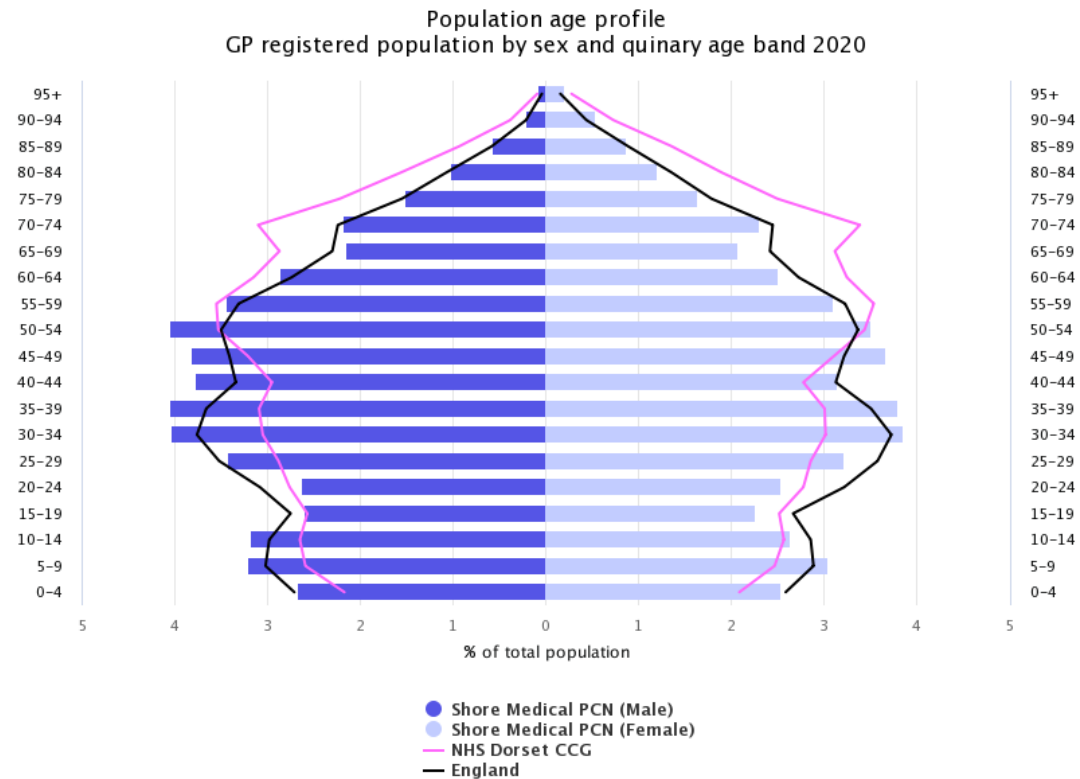
- 2 pharmacies provided the Hepatitis-C Antibody Testing Service (Day Lewis Pharmacy, Gillett Road and Canford Health Pharmacy, Mitchell Road)
- 12 pharmacies provided the Hypertension Case-Finding Service
- 17 pharmacies delivered the Urgent Repeat Medicines Service
- 3 pharmacies provided the Stop Smoking Service



Demographics

The population age profile shows that there are approximately 17,900 people registered at GP practices in the Shore Medical PCN (9,200 males and 8,700 females).

Compared to the Dorset ICS and national averages, Shore Medical has a higher proportion of people aged under 18 and a lower proportion of people aged 65 & over.



Source: National General Practice Profiles 2020



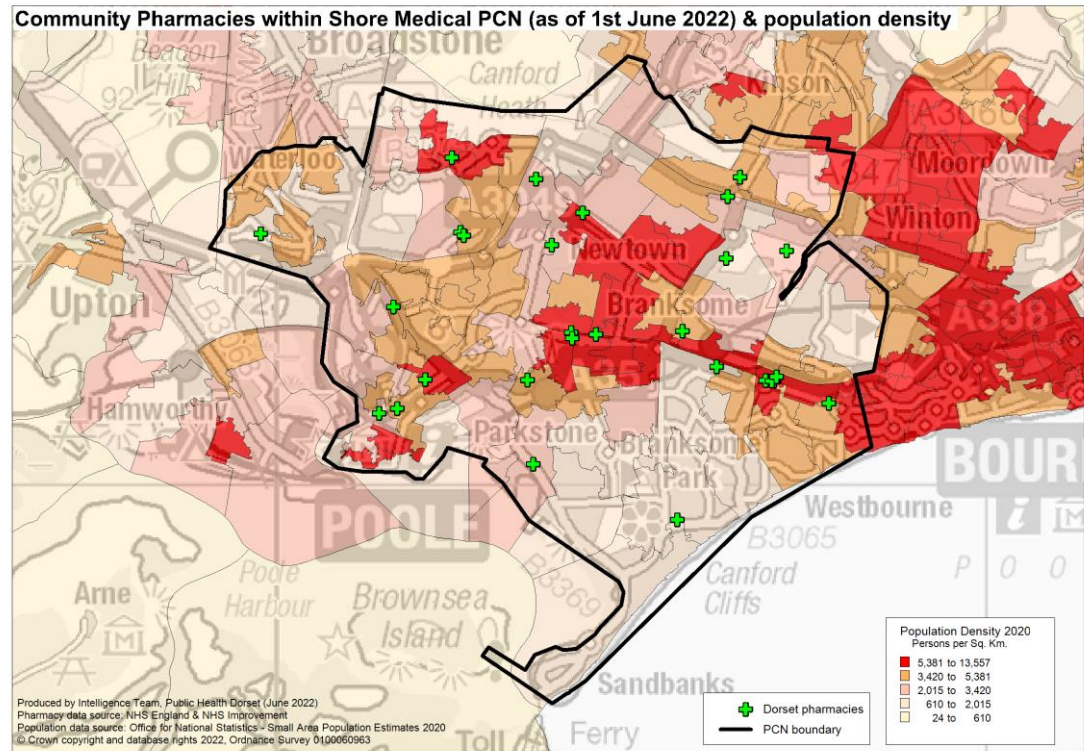
Demographics

The area covered by the PCN is largely urban with the highest population density around Branksome, Alderney, Parkstone and Poole Town.

Over the next 3 years from 2022-25 projections suggest the population of the BCP area overall will increase by 2.5 thousand (0.6%).

This growth is driven by increases in the population aged over 65, with the number of children and young people (aged 0-16) projected to decrease.

The number of over 65s is projected to increase by almost 3.8 thousand (4%) to 2025, compared to a small decrease of around 1.5 thousand of children and young people. The working age population is forecast to remain roughly unchanged. By 2025 those aged 65+ will account for 23% of the overall population.



Housing

To understand any increases in demand for services based on planned housing developments, planning applications with consent to build to 2025 in BCP and 2026 in Dorset have been analysed. Postcodes (or the nearest existing postcode to the development site) have been matched to PCN networks.

This gives a realistic picture of housing growth within the PCN. The net level of development for this PCN area is anticipated to be approximately 3,624 dwellings. This is approximately 19% of the total net housing development for BCP and Dorset.

The main areas of proposed development in the PCN are in Poole Town (1,223), around Westcliff and Westbourne (700) and Parkstone (416).

There are also some notable net numbers in Penn Hill (284) and Creekmoor (290).



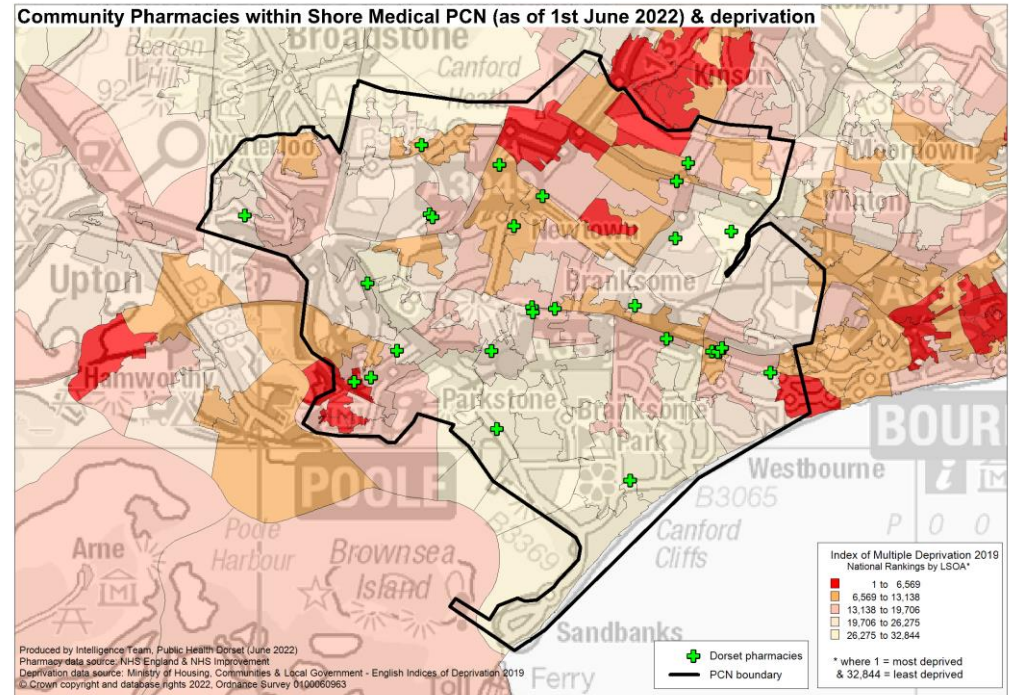
Deprivation

Shore Medical PCN has an average IMD 2019 Score of 17.4.

The highest levels of deprivation in Shore Medical PCN are found around Poole Town, Alderney, West Howe and West Cliff.

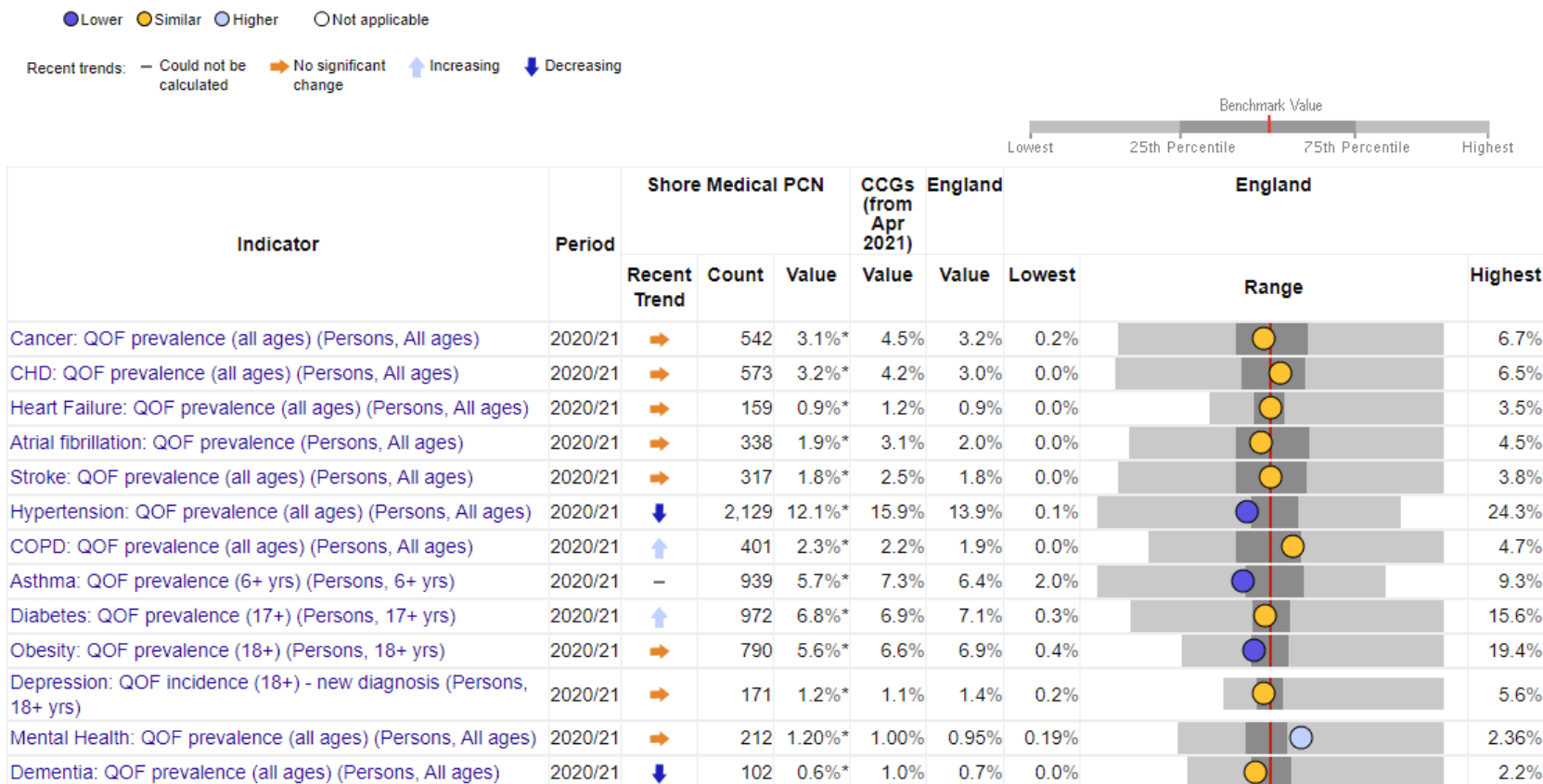
Eight lower super output areas (LSOAs) are amongst the 20% most deprived in England. A further 22 LSOAs are amongst the worst 40% deprived.

In contrast, Shore Medical PCN also has 22 LSOAs amongst the least 20% deprived in England.



Health and Wider Determinants

To understand the health needs and wider determinants of health in the PCN, the spine chart below visualises the data on a table of indicators and for each one it highlights whether the value is lower or higher benchmarked to national rates. The grey bar shows the range between the lowest or highest areas in England.



Health and Wider Determinants

● Lower ● Similar ● Higher ○ Not applicable

Recent trends: — Could not be calculated → No significant change ↑ Increasing ↓ Decreasing



Indicator	Period	Shore Medical PCN		CCGs (from Apr 2021)	England	England			
		Recent Trend	Count	Value	Value	Value	Lowest	Range	Highest
% reporting to be unemployed (Persons, 16+ yrs)	2021	→	29	3.4%*	3.4%	5.5%	0.0%		17.6%
% reporting to be in paid work or in full-time education (Persons, 16+ yrs)	2021	→	483	57.7%*	56.8%	61.8%	41.3%		95.0%
% with caring responsibility (Persons, 16+ yrs)	2021	→	154	18.5%*	19.9%	18.2%	1.0%		32.6%
% with a long-standing health condition (Persons, 16+ yrs)	2021	→	426	52.1%*	53.8%	51.1%	27.3%		73.9%
Estimated smoking prevalence (QOF) (Persons, 15+ yrs)	2020/21	↑	2,925	20.1%*	15.2%	15.9%	5.0%		34.3%

Source: National General Practice Profiles, accessed 2022



Health and Wider Determinants

Local Health provides evidence of inequalities within local areas aggregated to represent Shore Medical PCN. The spine chart below visualises the data and for each indicator it highlights whether the value is significantly different to national rates using a 95% confidence interval.

● Significantly better / England ● Not significantly different ● Significantly worse / England

Indicators	Selection Value	England Value	England Worst	Spine chart	England Best
Income deprivation, English Indices of Deprivation, 2019 (%)	10.8	12.9	48.8	●	0.9
Child Poverty, English Indices of Deprivation, 2019 (%)	14.7	17.1	64.7	●	0.9
Older People in Deprivation, English Indices of Deprivation, 2019 (%)	12.6	14.2	76.0	●	2.0
Older people living alone (%)	32.0	31.5	87.2	●	14.4
Overcrowded houses, 2011 (%)	8.1	8.7	60.9	●	0.6
Emergency hospital admissions for all causes (SAR)	112.1	100.0	215.5	●	33.6
Emergency hospital admissions for coronary heart disease (SAR)	123.0	100.0	506.7	●	22.4
Emergency hospital admissions for stroke (SAR)	115.6	100.0	252.7	●	28.9
Emergency hospital admissions for Myocardial Infarction (heart attack) (SAR)	109.8	100.0	347.2	●	15.3
Emergency hospital admissions for Chronic Obstructive Pulmonary Disease (COPD) (SAR)	97.6	100.0	530.7	●	9.3
Emergency hospital admissions for hip fracture in 65+ (SAR)	115.4	100.0	552.7	●	0.0
Hospital stays for self harm (SAR)	170.5	100.0	510.2	●	9.0
Hospital stays for alcohol related harm (Narrow definition) (SAR)	101.1	100.0	463.3	●	33.9
Hospital stays for alcohol related harm (Broad definition) (SAR)	102.7	100.0	393.0	●	34.4
Limiting long-term illness or disability (%)	18.8	17.6	38.9	●	3.6
Deaths from all causes, all ages (Standardised mortality ratio (SMR))	99.2	100.0	234.0	●	38.7
Deaths from all causes, under 75 years (Standardised mortality ratio (SMR))	94.8	100.0	303.7	●	25.1
Deaths from all cancer, all ages (Standardised mortality ratio (SMR))	99.0	100.0	200.8	●	37.9
Deaths from all cancer, under 75 years (Standardised mortality ratio (SMR))	99.8	100.0	221.8	●	33.4
Deaths from circulatory disease, all ages (Standardised mortality ratio (SMR))	93.1	100.0	247.4	●	33.2
Deaths from circulatory disease, under 75 years (Standardised mortality ratio (SMR))	84.1	100.0	364.2	●	9.1
Deaths from coronary heart disease, all ages (Standardised mortality ratio (SMR))	92.8	100.0	314.2	●	21.2
Deaths from stroke, all ages (Standardised mortality ratio (SMR))	96.5	100.0	404.9	●	0.0
Deaths from respiratory diseases, all ages (Standardised mortality ratio (SMR))	88.7	100.0	313.4	●	0.0
Deaths from causes considered preventable, under 75 years, SMR (Standardised mortality ratio (SMR))	94.0	100.0	374.6	●	16.2

