

Pharmaceutical Needs Assessment:
South Coastal Medical Group
Primary Care Network Profile
September 2022



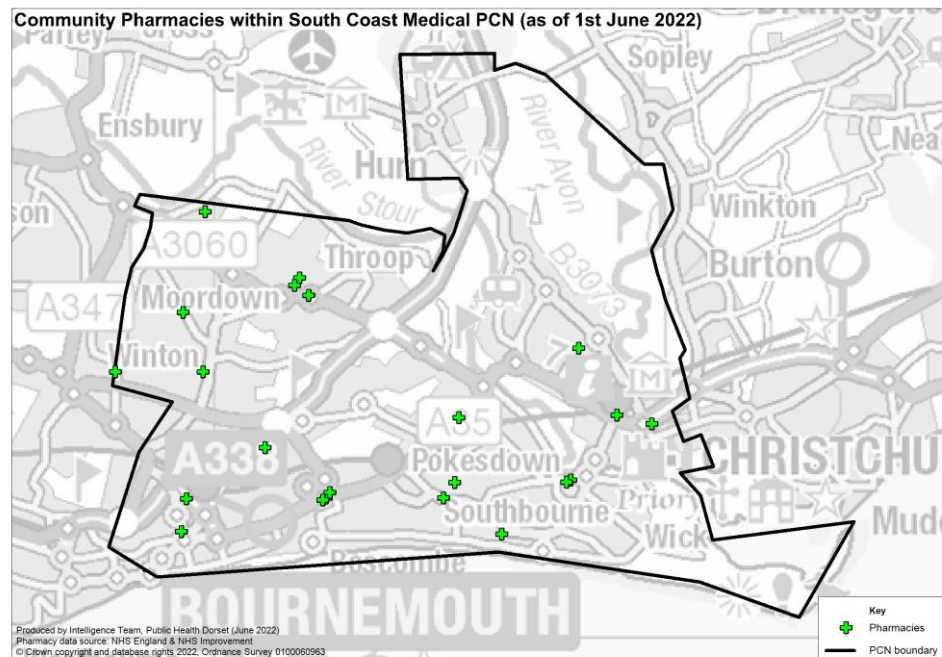
Introduction

South Coastal Medical Group PCN has no gaps and is predominantly in BCP Council but a small portion is in Hampshire. It is largely urban and has higher levels of deprivation with 12 areas amongst the 20% most deprived in England. Housing growth will be seen predominantly in Bournemouth Central (Lansdowne and St Peter's areas), Eastcliff and Christchurch Town, provided these developments are completed.

An analysis of health and the wider determinants of health highlights poor outcomes for coronary heart disease, atrial fibrillation, stroke, COPD, smoking prevalence, older people living alone, overcrowding, emergency hospital admissions for hip fractures, hospital stays for self-harm, alcohol related harm, and self-reported limiting long-term illness.

There are currently 24 pharmacies within the PCN as of June 2022. The following headings have been used to describe the PCN in more detail:

- Number of pharmacies, openings hours & services
- Demographics
- Housing
- Deprivation
- Health and Wider Determinants



Warning: The geographies within this PCN area can be in the catchment of multiple PCN boundaries. Therefore the information contained within these profiles should not be aggregated or compared with other profiles as this could lead to misleading interpretations.



Number of Pharmacies

There were 24 pharmacies in South Coast Medical Group as of June 2022. Of these, 13 pharmacies were owned by national pharmacy chains:

- 6 by Boots Pharmacy
- 3 by Rowlands Pharmacy
- 2 by Superdrug Pharmacy
- 1 by Lloyds Pharmacy
- 1 by Asda Pharmacy

On 1st September 2022, one of the above pharmacies underwent a change of ownership – the Rowlands Pharmacy at Shelley Manor Medical Centre, Beechwood Avenue is now owned by Day Lewis PLC.

There are 11 pharmacies that are owned by other providers. There is one 100-hour pharmacy in South Coast Medical Group as of June 2022 (Castle Lane Pharmacy on Castle Lane West) and 23 40-hour pharmacies.

There are 22 pharmacies that are Community Pharmacist Consultation Service (CPCS) accredited. A total of 829 CPCS consultations were provided in the first 9 months of 2021/22. In addition, all pharmacies have access to the Electronic Prescription Service (EPS).



Number of Pharmacies

There are no distance-selling pharmacies, no pharmacies have local pharmaceutical services contracts and there is one dispensing appliance contractor (Salts Medilink on Old Christchurch Road) as of June 2022.

Since the last PNA was published, two pharmacies have closed (a 40-hour Rowlands Pharmacy on Charminster Road and a 100-hour Day Lewis Pharmacy on Beechwood Avenue) and no new pharmacies have opened in South Coast Medical Group. The closure of the Day Lewis Pharmacy on Beechwood Avenue occurred after the 2021/22 financial year and so the number of pharmacies for 2021/22 (9 months) in the table on the next slide is shown as prior to this closure.

The number of items dispensed decreased by 0.3% between 2018/19 and 2020/21.

The number of items dispensed per head in 2020/21 was higher than the South West and England averages. The number of pharmacies per 100,000 population in 2020/21 in South Coast Medical Group was also higher than the South West and England averages (see next table).



Number of Pharmacies

Year	GP patients	Number of pharmacies	Pharmacies per 100,000 patients	Number of items dispensed	Items dispensed per patient
2018/19	-	26	-	2,103,963	-
2019/20	34,762	26	74.8	2,146,146	61.7
2020/21	33,871	26	76.8	2,098,326	62.0
2021/22 (9 months)	35,205	25	71.0	1,642,098	-
South West 2020/21	5,917,594	1,065	18.0	95,447,553	16.1
England 2020/21	60,650,740	11,748	19.4	1,016,769,042	16.8

Notes:

1. The column GP patients is based on estimates of number of patients registered with a GP in this locality. The estimates for each financial year are taken in March. For example, for the number of patients registered with a GP in March 2021 is taken as the population estimate for financial year 2020/2021. The figures for the South West and England can be found at: <https://digital.nhs.uk/data-and-information/publications/statistical/patients-registered-at-a-gp-practice/march-2021>
2. Estimates of number of patients registered at a GP within the PCN were not available for 2018/19 at the time of writing
3. Number of pharmacies in England and South West England in 2020/21 are taken from Supporting Tables from NHSBSA found at: <https://www.nhsbsa.nhs.uk/statistical-collections/general-pharmaceutical-services-england/general-pharmaceutical-services-england-201516-202021>
4. All pharmacy numbers include both community pharmacies and DACs

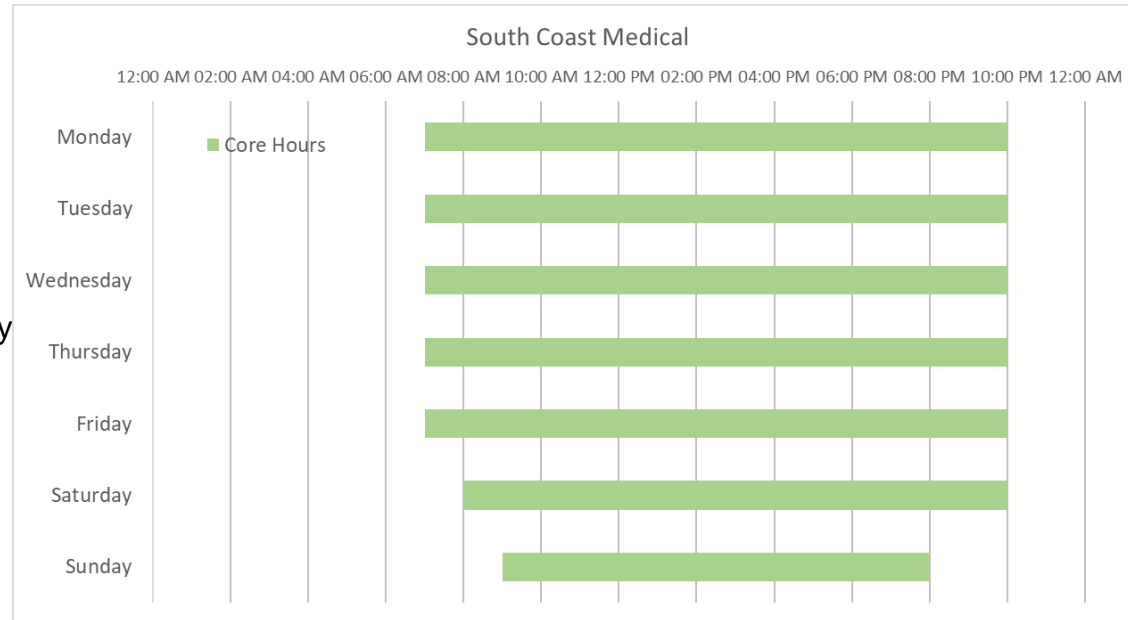


Pharmacy Opening Times

Access to the essential services (core plus supplementary opening hours)

- 5 pharmacies are open 7 days a week
- 15 pharmacies are open on Monday to Saturday only
- 4 pharmacies are open Monday to Friday only
- 1 pharmacy is open before 8 a.m. every day from Monday to Friday
- 4 pharmacies are open until after 6.30 p.m. every day from Monday to Friday

The following chart shows the earliest opening hours and the latest closing hours for the South Coast Medical Group area. All opening times are covered by core hours.



Access to Services

Access to Medicines Use Review (MUR)

Based on data for the first 9 months of the 2021/22 financial year, 0 MURs were carried out in South Coast Medical Group as the service has been decommissioned. This is compared to 1,832 MURs in 2020/21 and 6,576 MURs in 2018/19.

Access to New Medicines Service (NMS)

There were 20 pharmacies in South Coast Medical Group that had NMS accreditation as of June 2022. Over the first 9-month period of 2021/22, there were 1,979 NMSs undertaken. This is compared to the whole of 2020/21 where a total of 1,746 NMSs were undertaken.

Access to the 'on demand availability of specialist medicines' enhanced service

As of June 2022, no pharmacies in South Coast Medical Group provided the specialist medicines advanced service.

Access to dispensing of appliances

Data for this were unavailable at the time of writing.

Influenza vaccination advanced service

20 pharmacies in South Coast Medical Group delivered the influenza vaccination advanced service as of June 2022. A total of 15,807 vaccinations were given according to the NHSBSA's Advanced Flu Vaccination Service report dataset during the 2021/22 flu season in South Coast Medical Group locality pharmacies matched with the Dorset STP influenza report pharmacies.

Stoma appliance customisation advanced service

Two pharmacies and one dispensing appliance contractor in South Coast Medical Group provided stoma customisation as of June 2022:

- Rowlands Pharmacy, Charminster Road
- Rowlands Pharmacy, Shelley Manor Medical Centre, Beechwood Avenue
- Salts Medilink, Old Christchurch Road

There was a total of 8,021 stoma customisations in the first 9 months of 2021/22. In comparison, in 2018/19 a total of 11,115 stoma customisations were performed.



Access to Services

Appliance use review (AUR) advanced service

There is one dispensing appliance contractor in South Coast Medical Group that provides this service (Salts Medilink on Old Christchurch Road); however, in the first 9 months of 2021/22, there were 0 AURs. This compares to 0 AURs in 2020/21 and 318 AURs in 2018/19.

Other services (as of May 2022)

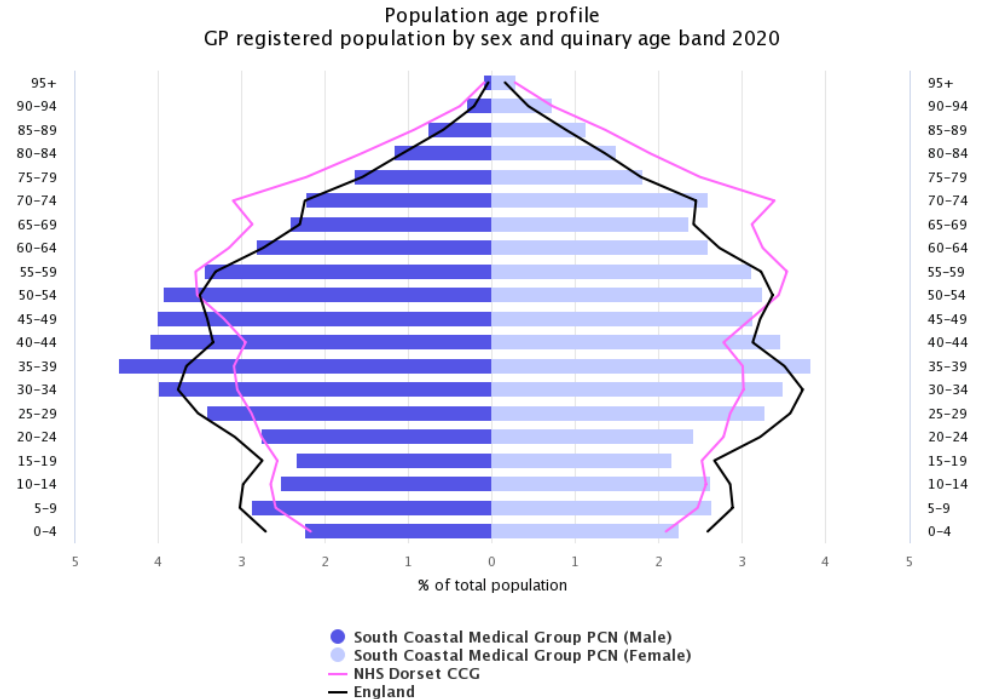
- 1 pharmacy provided the Hepatitis-C Antibody Testing Service
 - Queens Park Pharmacy, Holdenhurst Road
- 10 pharmacies provided the Hypertension Case-Finding Service
- 19 pharmacies delivered the Urgent Repeat Medicines Service
- 2 pharmacies provided the Stop Smoking Service
 - Castle Lane Pharmacy, Castle Lane West
 - The Grove Pharmacy, Fairmile Road



Demographics

The population age profile shows that there are approximately 33,900 people registered at GP practices in the South Coastal Medical Group PCN (17,400 males and 16,500 females).

Compared to the Dorset ICS and national averages, South Coastal Medical Group PCN has a higher proportion of people aged under 18 and a lower proportion of people aged 65 & over.



Source: National General Practice Profiles 2020



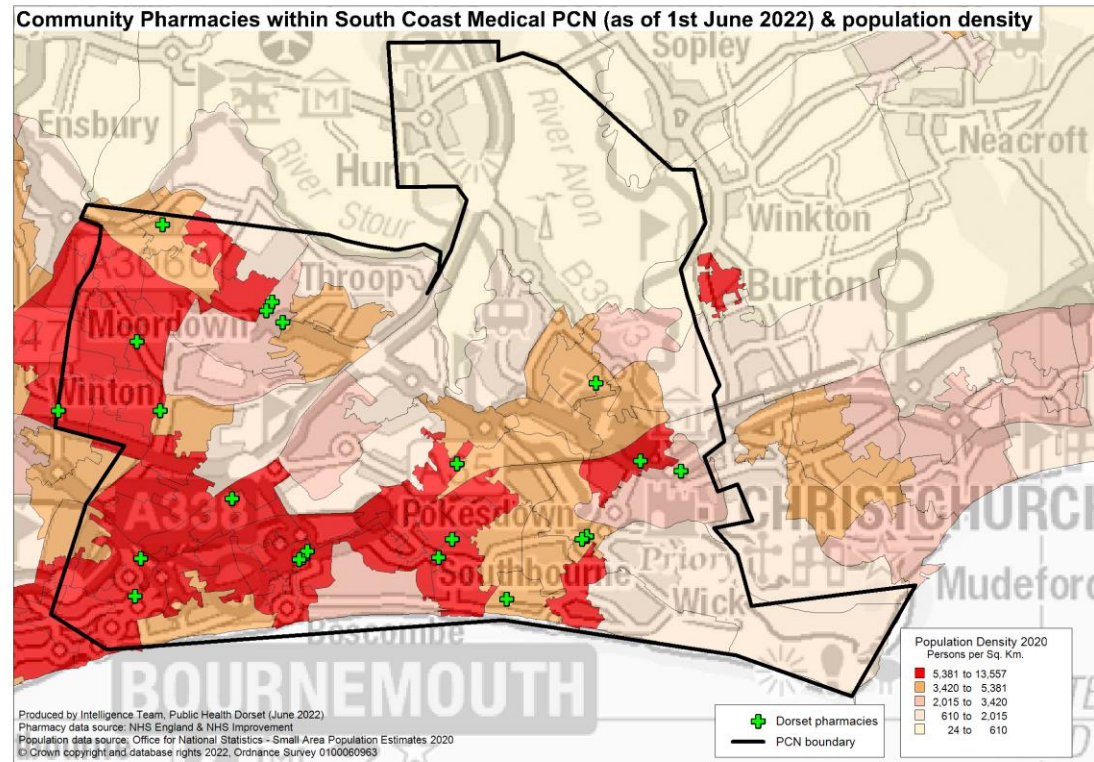
Demographics

The area covered by the PCN is largely urban with the highest population density around Boscombe, Pokesdown, Moordown and Winton.

Over the next 3 years from 2022-25 projections suggest the population of the BCP area overall will increase by 2.5 thousand (0.6%).

This growth is driven by increases in the population aged over 65, with the number of children and young people (aged 0-16) projected to decrease.

The number of over 65s is projected to increase by almost 3.8 thousand (4%) to 2025, compared to a small decrease of around 1.5 thousand of children and young people. The working age population is forecast to remain roughly unchanged. By 2025 those aged 65+ will account for 23% of the overall population.



Housing

To understand any increases in demand for services based on planned housing developments, planning applications with consent to build to 2025 in BCP and 2026 in Dorset have been analysed. Postcodes (or the nearest existing postcode to the development site) have been matched to LSOAs and then PCN networks.

This gives a realistic picture of housing growth within the PCN. The net level of development for this PCN area is approximately 2,473 dwellings. This is about 13% of the total net housing development for BCP and Dorset.

In this PCN the development will predominantly be seen in the Bournemouth Central area (1,296) particularly Lansdowne and St Peter's areas. There is also notable development in East Cliff & Springbourne (308) particularly around Knyevton & Spencer Gardens and north Eastcliff and Christchurch Town (204) in the Priory area.

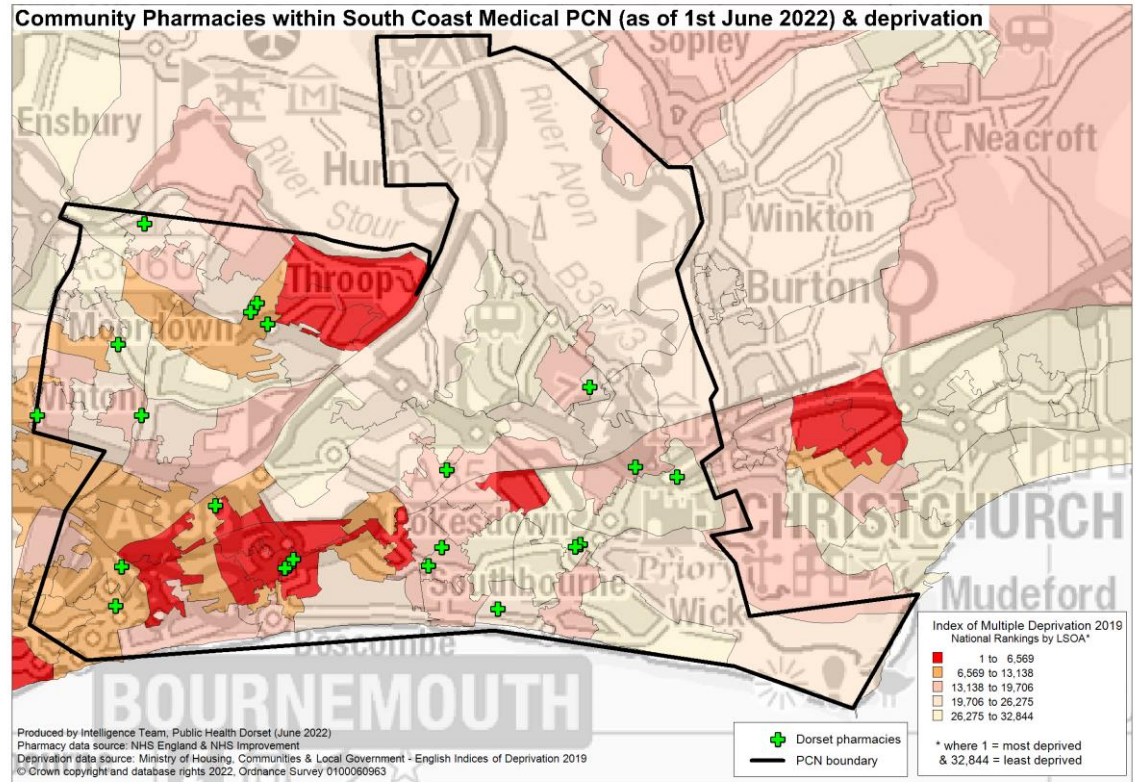


Deprivation

South Coastal Medical Group PCN has an average IMD 2019 Score of 20.1.

The highest levels of deprivation in South Coastal Medical Group PCN are found around Townsend, Boscombe, Charminster and around Central Bournemouth.

12 lower super output areas (LSOAs) are amongst the 20% most deprived in England. A further 13 LSOAs are amongst the worst 40% deprived.



Health and Wider Determinants

To understand the health needs and wider determinants of health in the PCN, the spine chart below visualises the data on a table of indicators and for each one it highlights whether the value is lower or higher benchmarked to national rates. The grey bar shows the range between the lowest or highest areas in England.

● Lower ● Similar ● Higher ○ Not applicable

Recent trends: — Could not be calculated → No significant change ↑ Increasing ↓ Decreasing



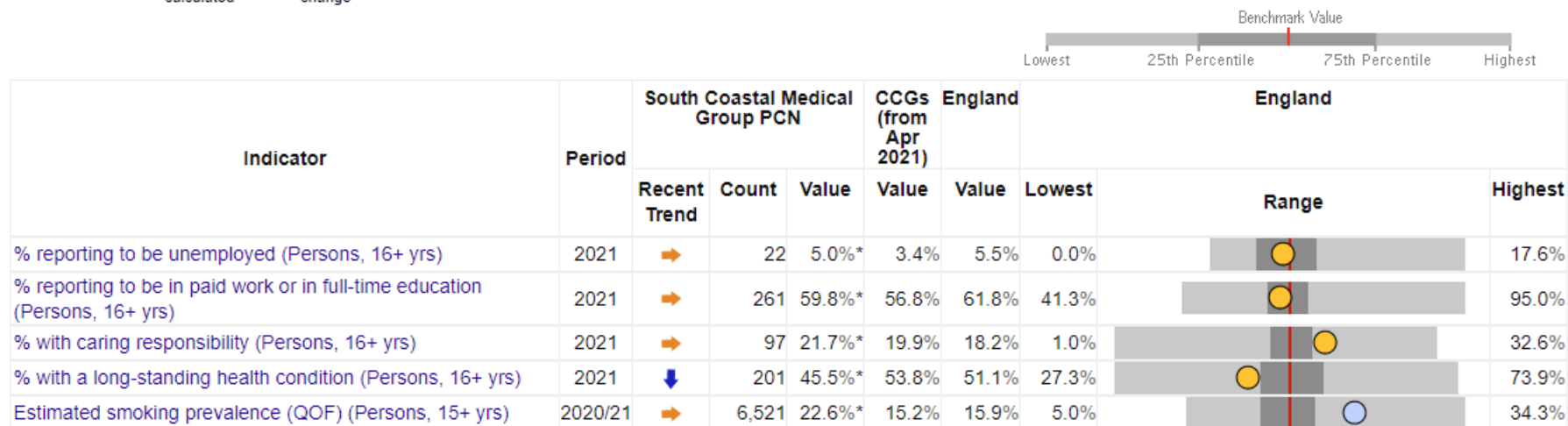
Indicator	Period	South Coastal Medical Group PCN			CCGs (from Apr 2021)	England	England			
		Recent Trend	Count	Value	Value	Value	Lowest	Range	Highest	
Cancer: QOF prevalence (all ages) (Persons, All ages)	2020/21	↑	1,203	3.5%*	4.5%	3.2%	0.2%		6.7%	
CHD: QOF prevalence (all ages) (Persons, All ages)	2020/21	→	1,189	3.5%*	4.2%	3.0%	0.0%		6.5%	
Heart Failure: QOF prevalence (all ages) (Persons, All ages)	2020/21	→	337	1.0%*	1.2%	0.9%	0.0%		3.5%	
Atrial fibrillation: QOF prevalence (Persons, All ages)	2020/21	→	826	2.4%*	3.1%	2.0%	0.0%		4.5%	
Stroke: QOF prevalence (all ages) (Persons, All ages)	2020/21	→	780	2.3%*	2.5%	1.8%	0.0%		3.8%	
Hypertension: QOF prevalence (all ages) (Persons, All ages)	2020/21	→	4,564	13.4%*	15.9%	13.9%	0.1%		24.3%	
COPD: QOF prevalence (all ages) (Persons, All ages)	2020/21	→	857	2.5%*	2.2%	1.9%	0.0%		4.7%	
Asthma: QOF prevalence (6+ yrs) (Persons, 6+ yrs)	2020/21	—	2,114	6.6%*	7.3%	6.4%	2.0%		9.3%	
Diabetes: QOF prevalence (17+) (Persons, 17+ yrs)	2020/21	→	1,667	5.9%*	6.9%	7.1%	0.3%		15.6%	
Obesity: QOF prevalence (18+) (Persons, 18+ yrs)	2020/21	→	1,938	6.9%*	6.6%	6.9%	0.4%		19.4%	
Depression: QOF incidence (18+) - new diagnosis (Persons, 18+ yrs)	2020/21	→	383	1.4%*	1.1%	1.4%	0.2%		5.6%	
Mental Health: QOF prevalence (all ages) (Persons, All ages)	2020/21	→	516	1.52%*	1.00%	0.95%	0.19%		2.36%	
Dementia: QOF prevalence (all ages) (Persons, All ages)	2020/21	→	447	1.3%*	1.0%	0.7%	0.0%		2.2%	



Health and Wider Determinants

● Lower ● Similar ○ Higher ○ Not applicable

Recent trends: — Could not be calculated → No significant change ↑ Increasing ↓ Decreasing



Source: National General Practice Profiles, accessed 2022



Health and Wider Determinants

Local Health provides evidence of inequalities within local areas aggregated to represent South Coastal Medical Group PCN. The spine chart below visualises the data and for each indicator it highlights whether the value is significantly different to national rates using a 95% confidence interval.

