

Pharmaceutical Needs Assessment: Wimborne and Ferndown Primary Care Network Draft Profile



Introduction

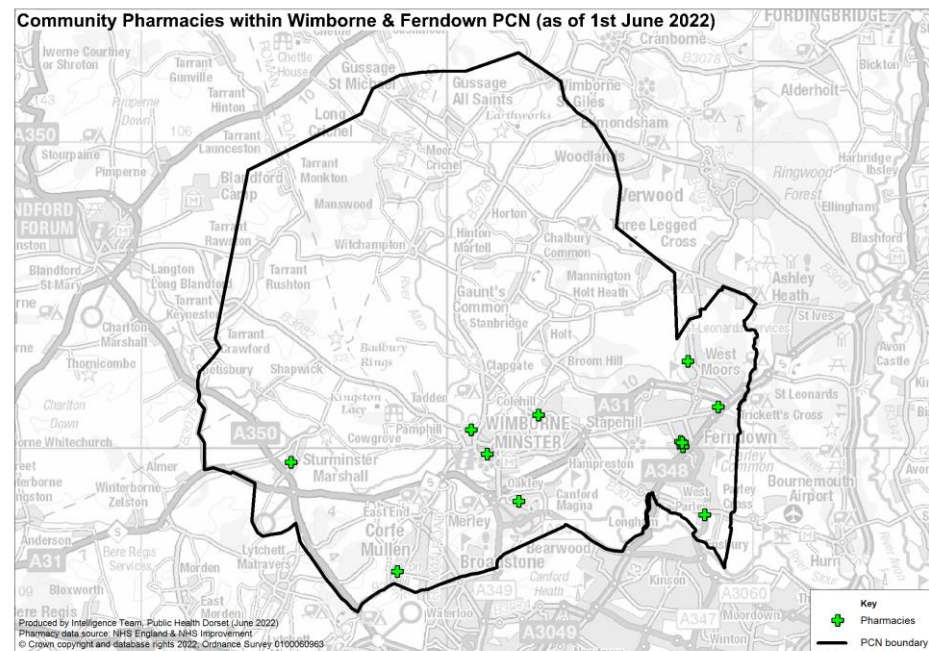
Wimborne & Ferndown PCN has no gaps and is predominantly in Dorset Council but some is within BCP Council. It is largely rural with a higher than average proportion of older people compared to both the Dorset and national average.

The PCN has low levels of deprivation with no areas amongst the worst 20% deprived in England. Housing growth will be seen predominantly in Wimborne but also Bearwood, West Parley and Corfe Mullen, provided these developments are completed.

An analysis of health and the wider determinants of health highlights poor outcomes in cancer, coronary heart disease, heart failure, atrial fibrillation, stroke, hypertension, asthma, emergency hospital admissions for hip fractures, hospital stays for self-harm and self-reported limiting long-term illness.

There are currently 14 pharmacies within the PCN as of June 2022. The following headings have been used to describe the locality in more detail:

- Number of pharmacies, openings hours & services
- Demographics
- Deprivation
- Housing
- Health and Wider Determinants



Warning: The geographies within this PCN area can be in the catchment of multiple PCN boundaries. Therefore the information contained within these profiles should not be aggregated or compared with other profiles as this could lead to misleading interpretations.



Number of Pharmacies

There are currently 14 pharmacies in Wimborne & Ferndown as of June 2022.

Six pharmacies are owned by national pharmacy chains:

- 3 by Boots Pharmacy
- 2 by Rowlands Pharmacy
- 1 by Tesco Pharmacy

Eight pharmacies are owned by other providers.

There is one 100-hour pharmacy in Wimborne & Ferndown as of June 2022 (Ferndown Pharmacy on Ringwood Road) and thirteen 40-hour pharmacies.



Number of Pharmacies

There are 12 pharmacies that are Community Pharmacist Consultation Service (CPCS) accredited, providing a total of 353 CPCS consultations in the first 9 months of 2021/22. In addition, all pharmacies have access to the Electronic Prescription Service (EPS).

There is one distance-selling pharmacy (Meds2Home Pharmacy on Victoria Road), no pharmacies have local pharmaceutical services contracts and there is one dispensing appliance contractor (Respond Healthcare on Wimborne Road East) as of June 2022.

Since the last PNA was published, no pharmacies have closed and one new pharmacy has opened (Meds2Home Pharmacy on Victoria Road).

The number of items dispensed decreased by 3.5% between 2018/19 and 2020/21.

The number of items dispensed per head in 2020/21 was higher than the South West and England averages. The number of pharmacies per 100,000 population in 2020/21 in Wimborne & Ferndown was also higher than the South West and England averages (see next table).



Number of Pharmacies

Year	GP patients	Number of pharmacies	Pharmacies per 100,000 patients	Number of items dispensed	Items dispensed per patient
2018/19	-	13	-	1,304,527	-
2019/20	41,368	13	31.4	1,325,476	32.0
2020/21	41,608	13	31.2	1,259,224	30.3
2021/22 (9 months)	42,230	14	33.2	983,457	-
South West 2020/21	5,917,594	1,065	18.0	95,447,553	16.1
England 2020/21	60,650,740	11,748	19.4	1,016,769,042	16.8

Notes:

1. The column GP patients is based on estimates of number of patients registered with a GP in this locality. The estimates for each financial year are taken in March. For example, for the number of patients registered with a GP in March 2021 is taken as the population estimate for financial year 2020/2021. The figures for the South West and England can be found at: <https://digital.nhs.uk/data-and-information/publications/statistical/patients-registered-at-a-gp-practice/march-2021>
2. Estimates of number of patients registered at a GP within the PCN were not available for 2018/19 at the time of writing
3. Number of pharmacies in England and South West England in 2020/21 are taken from Supporting Tables from NHSBSA found at: <https://www.nhsbsa.nhs.uk/statistical-collections/general-pharmaceutical-services-england/general-pharmaceutical-services-england-201516-202021>
4. All pharmacy numbers include both community pharmacies and DACs

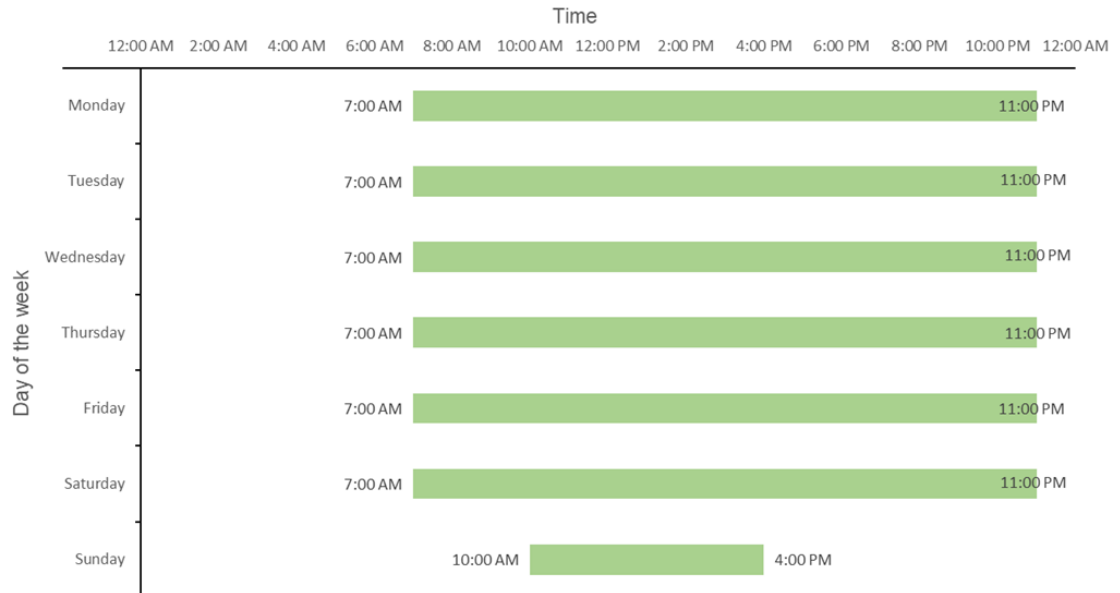


Pharmacy Opening Times

Access to the essential services (core plus supplementary opening hours)

- 3 pharmacies are open 7 days a week
- 7 pharmacies are open on Monday to Saturday only
- 4 pharmacies are open Monday to Friday only
- 1 pharmacy is open before 8 a.m. every day from Monday to Friday
- 4 pharmacies are open until after 6.30 p.m. every day from Monday to Friday

The following chart shows the earliest opening hours and the latest closing hours for the Wimborne & Ferndown area.



Access to Services

Access to Medicines Use Review (MUR)

Based on data for the first 9 months of the 2021/22 financial year, 0 MURs were carried out in Wimborne & Ferndown as the service has been decommissioned. This is compared to 936 MURs in 2020/21 and 3,625 MURs in 2018/19.

Access to New Medicines Service (NMS)

There were 12 pharmacies in Wimborne & Ferndown that had NMS accreditation as of May 2022. Over the first 9-month period of 2021/22, there were 1,455 NMSs undertaken. This is compared to the whole of 2020/21 where a total of 1,292 NMSs were undertaken.

Access to the 'on demand availability of specialist medicines' enhanced service

As of May 2022, no pharmacies in Wimborne & Ferndown provided the specialist medicines advanced service.

Access to dispensing of appliances

Data for this were unavailable at the time of writing.

Influenza vaccination advanced service

11 pharmacies in Wimborne & Ferndown delivered the influenza vaccination advanced service as of May 2022. A total of 5,845 vaccinations were given according to the NHSBSA's Advanced Flu Vaccination Service report dataset during the 2021/22 flu season in Wimborne & Ferndown locality pharmacies matched with the Dorset STP influenza report pharmacies.

Stoma appliance customisation advanced service

Three pharmacies in Wimborne & Ferndown provide stoma customisation as of May 2022 (Rowlands Pharmacy on St. Mary's Road, Rowlands Pharmacy on Sopwith Crescent and Respond Healthcare on Wimborne Road East), with a total of 11,165 stoma customisations in the first 9 months of 2021/22. In comparison, in 2018/19 a total of 11,354 stoma customisations were performed.



Access to Services

Appliance use review (AUR) advanced service

There is one pharmacy in Wimborne & Ferndown that provides this service (Respond Healthcare on Wimborne Road East) and in the first 9 months of 2021/22, there were 2 AURs performed. This compares to 0 AURs in 2020/21 and to 6 AURs in 2018/19.

Other services (as of May 2022)

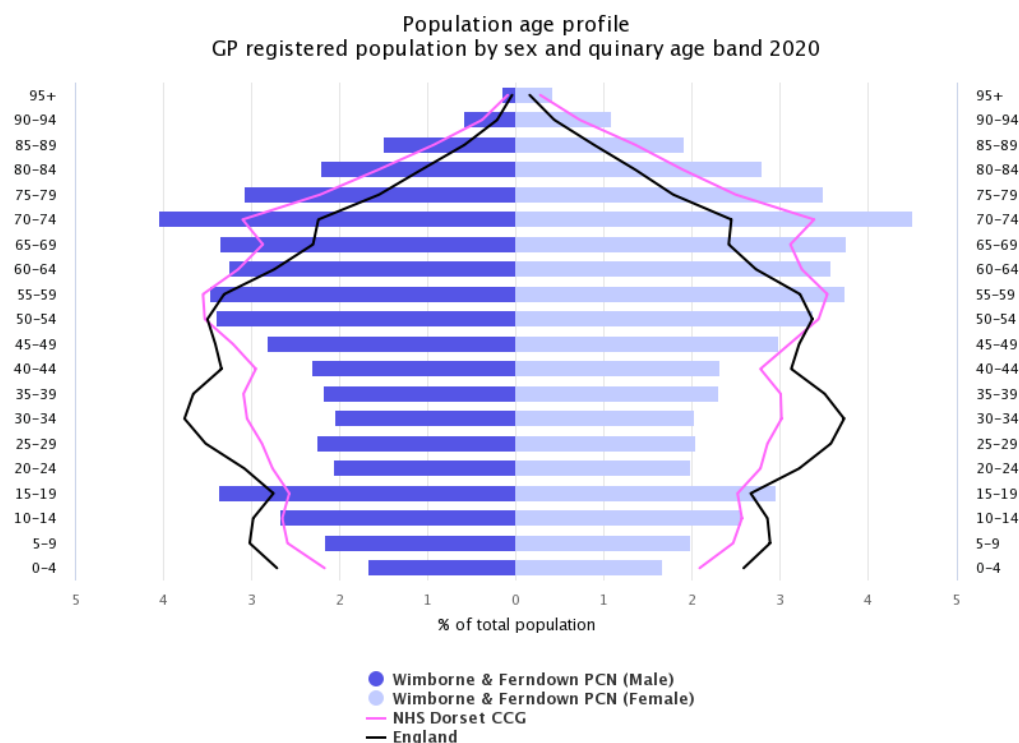
- 0 pharmacies provided the Hepatitis-C Antibody Testing Service.
- Nine pharmacies provided the Hypertension Case-Finding Service.
- 10 pharmacies delivered the Urgent Repeat Medicines Service.
- Six pharmacies provided the Stop Smoking Service



Demographics

The population age profile shows that there are approximately 41,400 people registered at GP practices in the Wimborne & Ferndown PCN (20,100 males and 21,300 females).

Compared to the Dorset CCG and national average, Wimborne & Ferndown PCN has a lower proportion of people aged under 18 and a higher proportion of people aged 65 & over.



Source: National General Practice Profiles 2020



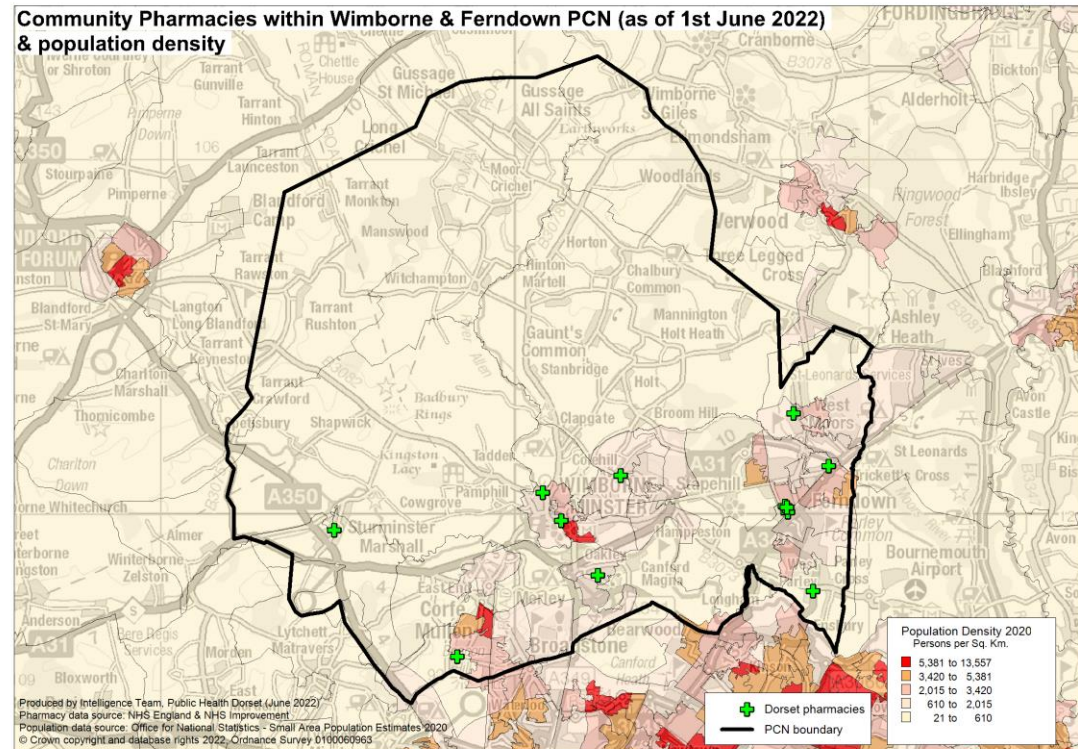
Demographics

The area covered by the PCN is largely rural with the highest population density around the town of Corfe Mullen, Wimborne Minster and Ferndown.

Over the next 3 years from 2022-25 projections suggest the population of Dorset overall will increase by 5.2 thousand (1.4%).

This growth is driven by increases in the population aged over 65, with the number of children and young people (aged 0-16) projected to decrease.

The number of over 65s are projected to increase by almost 7.1 thousand (6%) to 2025, compared to a small decrease of around 1 thousand children and young people aged 0-16. The working age population is forecast to remain roughly unchanged. By 2025 those aged 65+ will account for 32% of the overall population.



Housing

To understand any increases in demand for services based on planned housing developments, planning applications with consent to build to 2025 in BCP and 2026 in Dorset have been analysed. Postcodes (or the nearest existing postcode to the development site) have been matched to LSOAs and then PCN networks.

This gives a realistic picture of housing growth within the PCN. The net level of development for this PCN area is approximately 2509 dwellings. This is about 13% of the total net housing development for BCP and Dorset.

In this PCN the development is predominantly in Wimborne (1129) particularly the Leigh Park area. However there is also planned developments in Merley and Bearwood (415) in the area of Magna Road, around West Parley (296) and Corfe Mullen (181).

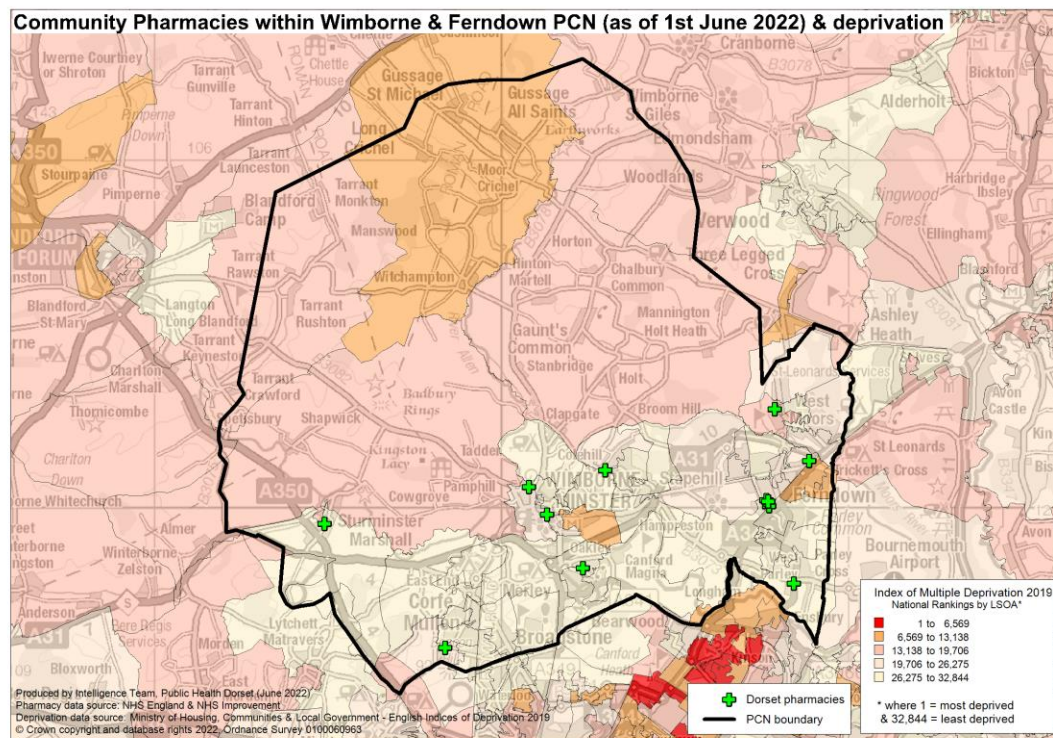


Deprivation

Wimborne & Ferndown PCN has low levels of deprivation with an average IMD 2019 Score of 10.5

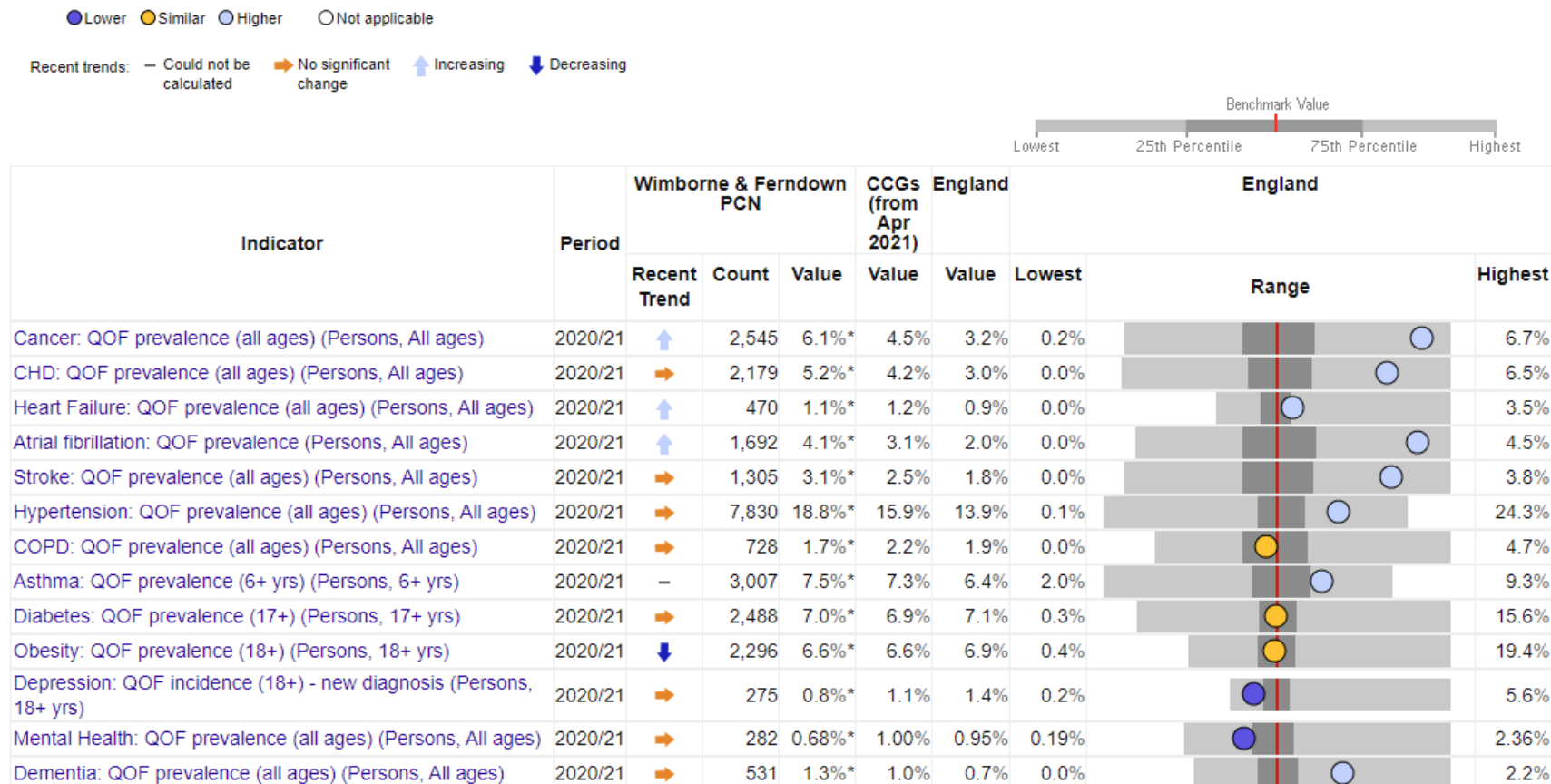
Five super output areas (LSOAs) in this PCN are amongst the 40% most deprived in England.

No LSOAs in Wimborne & Ferndown PCN are in the most deprived national quintile and 33 LSOAs are amongst the 20% least deprived.



Health and Wider Determinants

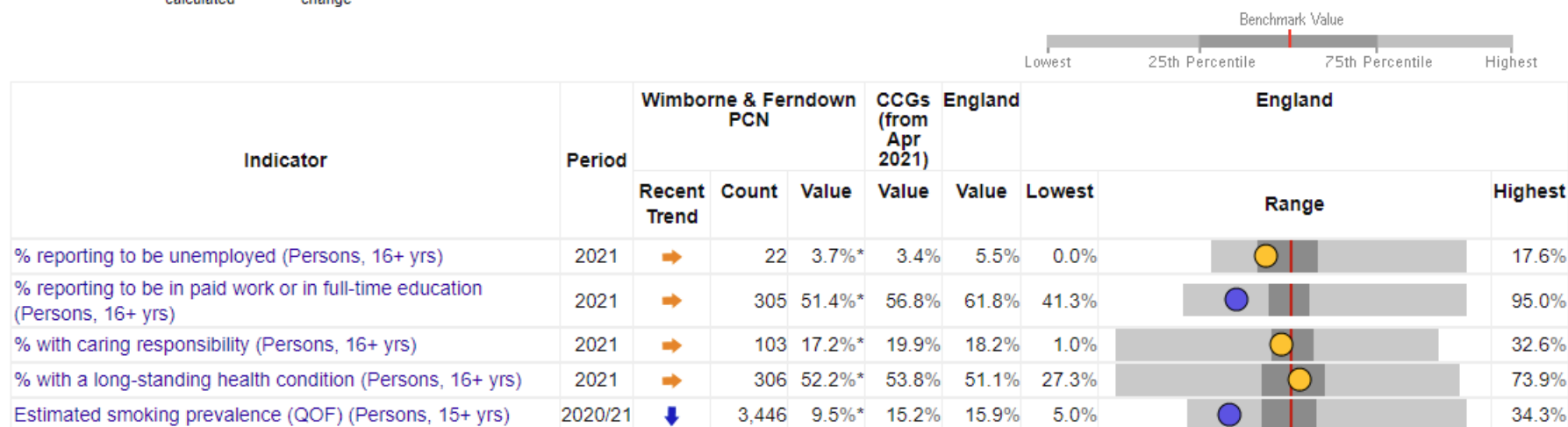
To understand the health needs and wider determinants of health in the PCN, the spine chart below visualises the data on a table of indicators and for each one it highlights whether the value is lower or higher benchmarked to national rates. The grey bar shows the range between the lowest or highest areas in England.



Health and Wider Determinants

● Lower ● Similar ● Higher ○ Not applicable

Recent trends: — Could not be calculated ➡ No significant change ⬆ Increasing ⬇ Decreasing



Source: National General Practice Profiles, accessed 2022



Health and Wider Determinants

Local Health provides evidence of inequalities within local areas aggregated to represent Wimborne & Ferndown PCN. The spine chart below visualises the data and for each indicator it highlights whether the value is significantly different to national rates using a 95% confidence interval.

