

Appendix M - North Dorset Locality Overview

The North Dorset locality is largely rural with a higher proportion of older people compared to both the Dorset and national average. There are no areas falling within the bottom quintile of deprivation. The North Dorset locality will see housing development in Shaftesbury, Blandford, Sherborne and Gillingham if these developments are completed. An analysis of health and the wider determinants of health highlights poor outcomes for incidences of prostate cancer and breast cancer and elective admissions for hip replacements.

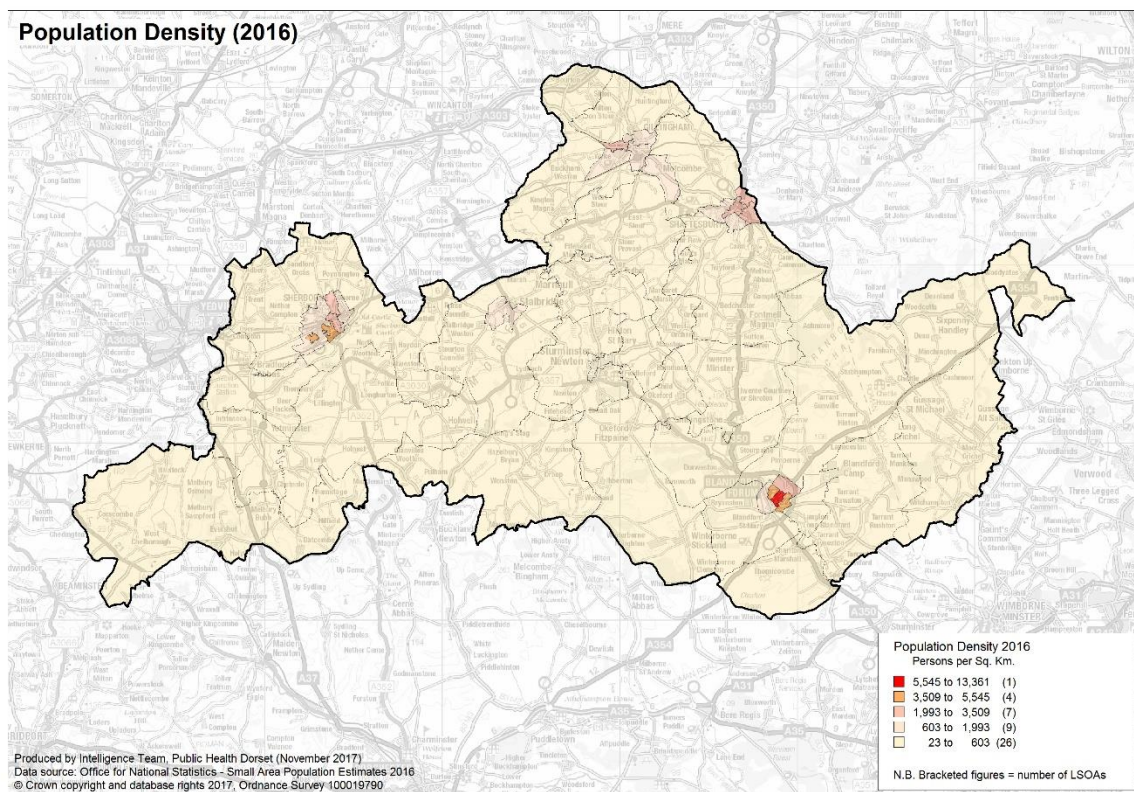
The following headings have been used to describe the locality in more detail:

- Demographics
- Housing
- Health and Wider Determinants

Demographics

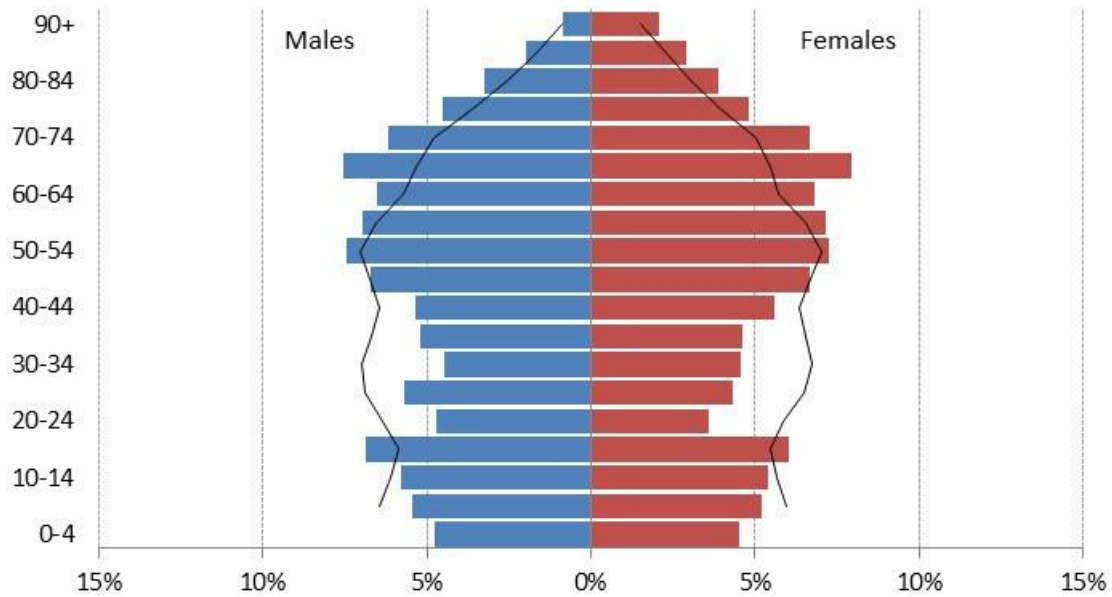
Population

ONS 2016 mid-year population estimates show that there are approximately 88,700 people living in the North Dorset locality (43,800 males and 44,900 females). The area covered by the locality is largely rural, with population density being highest around the towns of Blandford, Shaftesbury, Sherborne and Gillingham.



Compared to the rest of the Dorset CCG population, North Dorset has a higher proportion of people aged 55 to 79, and a lower proportion of people aged 15 to 44. The proportion of the population aged 65 & over in North Dorset is higher than the national average (26% compared with 18%).

North Dorset Population Pyramid with national comparator (2016 data)



Locally produced projections suggest that the population of the North Dorset locality will rise at a similar rate (+2.3%) to both the Dorset CCG average (+2%) and the national average (+2%) between 2018 and 2021. Within this trend, the proportion of the population aged 65 & over will remain higher than the national average.

Ethnicity

The vast majority of the population in North Dorset are White British. Ethnic minority groups account for a much smaller proportion of the population locally than in England as a whole (just over 2% compared with 15% - see table below which is based on 2011 Census data).

	North Dorset	England
White	97.57%	85.42%
Mixed	0.79%	2.25%
Asian	1.27%	7.82%
Black	0.27%	3.48%
Other	0.10%	1.03%

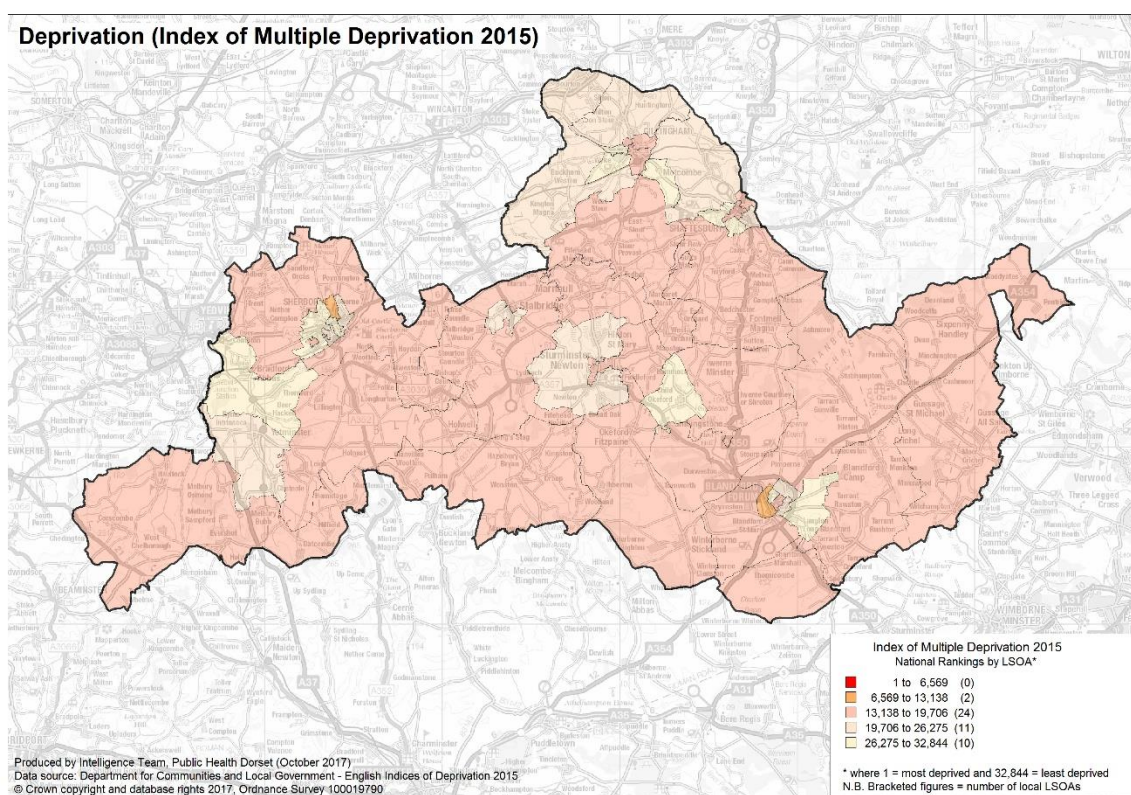
Religion

The 2011 Census suggests that, as in England as whole, the majority of North Dorset's population are Christians. However, the proportion of locality's population whose religion is either Buddhist, Hindu, Jewish, Muslim or Sikh is lower than the England average.

	North Dorset	England
Christian	67.40%	59.40%
Buddhist	0.35%	0.50%
Hindu	0.28%	1.50%
Jewish	0.14%	0.50%
Muslim	0.32%	5.00%
Sikh	0.01%	0.80%
Other religion	0.50%	0.40%
No religion	23.02%	24.70%
Not stated	7.98%	7.20%

Deprivation

The highest levels of deprivation in North Dorset are found around Blandford and Sherborne. Here, two lower super output areas (LSOAs) are amongst the 40% most deprived in England. However, no LSOAs in North Dorset are in the most deprived national quintile.



Housing

To understand any increases in demand for services based on planned housing developments, planning applications with consent to build over the next three years have been analysed. This gives a realistic picture of housing growth within the locality, if these developments are completed.

At the time of publishing the consultation draft, data on applications for 16/17 was not available for all of the North Dorset locality. Data is now available, showing the same main areas of housing development as the previous year's data, but with increased planned numbers.

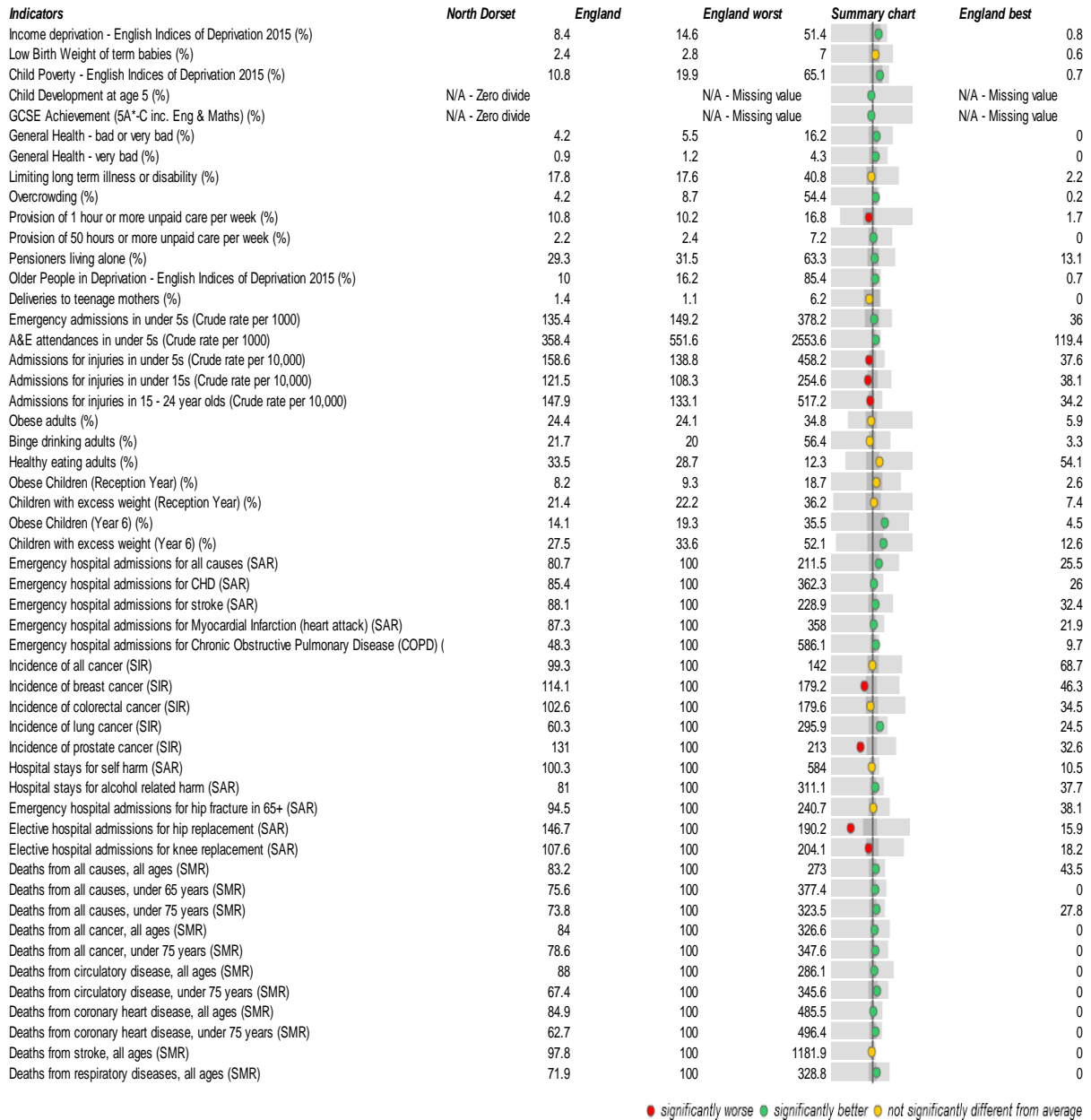
The area with most housing development is Shaftesbury (+401 dwellings, an additional 306 compared to 15/16 data), Blandford Forum & St Mary (+399, an additional 116 planned dwellings from 15/16), and Sherborne (+233 dwellings).

Area	Net dwellings
Shaftesbury	401
Blandford Forum & St Mary	399
Sherborne	233
Gillingham	173
Yetminster	88
Sturminster Newton	71
Stalbridge	23
Longburton	21
Sixpenny Handley	6
Vale of Allen	2
Villages and countryside	241

Health & Wider Determinants

To understand the health needs and wider determinants of health in the locality a national profiling tool has been used. This compares locality level data with the English average and highlights any areas that are significantly different.

The spine chart below visualises the data and for each indicator it highlights whether the score locally is significantly different to national rates using a 95% confidence interval.



The main areas where the North Dorset locality has worse outcomes than the national average include incidences of prostate cancer and breast cancer and elective admissions for hip replacements.