

# Pharmaceutical Needs Assessment: Christchurch Primary Care Network Profile

September 2022



# Introduction

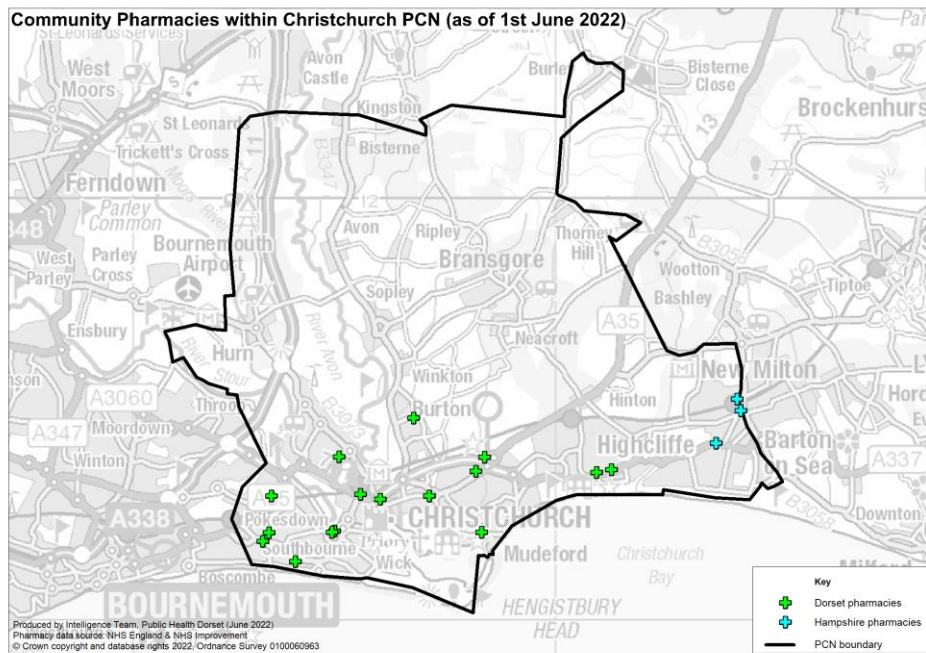
Christchurch PCN has no gaps and is largely rural in area but surrounds an urban centre. The PCN boundary is mainly in BCP Council but extends into parts of Dorset and Hampshire. The proportion of older people in the PCN is higher than the Dorset ICS average and almost double the national average. The PCN has five areas that are within the 20% most deprived in England.

Housing growth will be seen in Christchurch Town Priory and Hoburne North areas, provided these developments are completed.

An analysis of health and the wider determinants of health highlights higher levels of cancer, coronary heart disease, atrial fibrillation, stroke, hypertension and a greater proportion with caring responsibilities compared to England. There are currently 16 Dorset pharmacies and five dispensing practices as of June 2022. Three Hampshire pharmacies are also located within the PCN boundary.

The following headings have been used to describe the PCN in more detail:

- Number of pharmacies, opening hours & services
- Demographics
- Housing
- Deprivation
- Health and Wider Determinants



*Warning: The geographies within this PCN area can be in the catchment of multiple PCN boundaries. Therefore the information contained within these profiles should not be aggregated or compared with other profiles as this could lead to misleading interpretations.*



# Number of Pharmacies

There are currently 16 pharmacies in Christchurch as of June 2022. Seven pharmacies are owned by national pharmacy chains:

- 4 by Boots Pharmacy
- 1 by Rowlands Pharmacy
- 1 by Lloyds Pharmacy
- 1 by Day Lewis Pharmacy

Nine pharmacies are owned by other providers. There is one 100-hour pharmacy in Christchurch as of June 2022 (Lloyds Pharmacy inside Sainsbury's on Lyndhurst Road) and fifteen 40-hour pharmacies.

15 pharmacies are Community Pharmacist Consultation Service (CPCS) accredited providing a total of 299 CPCS consultations in the first 9 months of 2021/22. In addition, all pharmacies have access to the Electronic Prescription Service (EPS).



# Number of Pharmacies

There are no distance-selling pharmacies, no pharmacies with local pharmaceutical services contracts and no dispensing appliance contractors as of June 2022.

Since the last PNA was published, no pharmacies have closed and no new pharmacies have opened in Christchurch.

The number of items dispensed increased by 2.7% between 2018/19 and 2020/21.

The number of items dispensed per head in 2020/21 was higher than the South West and England averages. The number of pharmacies per 100,000 population in 2020/21 in Christchurch was also higher than the South West and England averages (see next table).



# Number of Pharmacies

Year	GP patients	Number of pharmacies	Pharmacies per 100,000 patients	Number of items dispensed	Items dispensed per patient
2018/19	-	16	-	1,656,893	-
2019/20	48,899	16	32.7	1,708,157	34.9
2020/21	48,830	16	32.8	1,702,048	34.9
2021/22 (9 months)	49,228	16	32.5	1,284,081	-
South West 2020/21	5,917,594	1,065	18.0	95,447,553	16.1
England 2020/21	60,650,740	11,748	19.4	1,016,769,042	16.8

## Notes:

1. The column GP patients is based on estimates of number of patients registered with a GP in this PCN. The estimates for each financial year are taken in March. For example, for the number of patients registered with a GP in March 2021 is taken as the population estimate for financial year 2020/2021. The figures for the South West and England can be found at: <https://digital.nhs.uk/data-and-information/publications/statistical/patients-registered-at-a-gp-practice/march-2021>
2. Estimates of number of patients registered at a GP within the PCN were not available for 2018/19 at the time of writing
3. Number of pharmacies in England and South West England in 2020/21 are taken from Supporting Tables from NHSBSA found at: <https://www.nhsbsa.nhs.uk/statistical-collections/general-pharmaceutical-services-england/general-pharmaceutical-services-england-201516-202021>
4. All pharmacy numbers include both community pharmacies and DACs

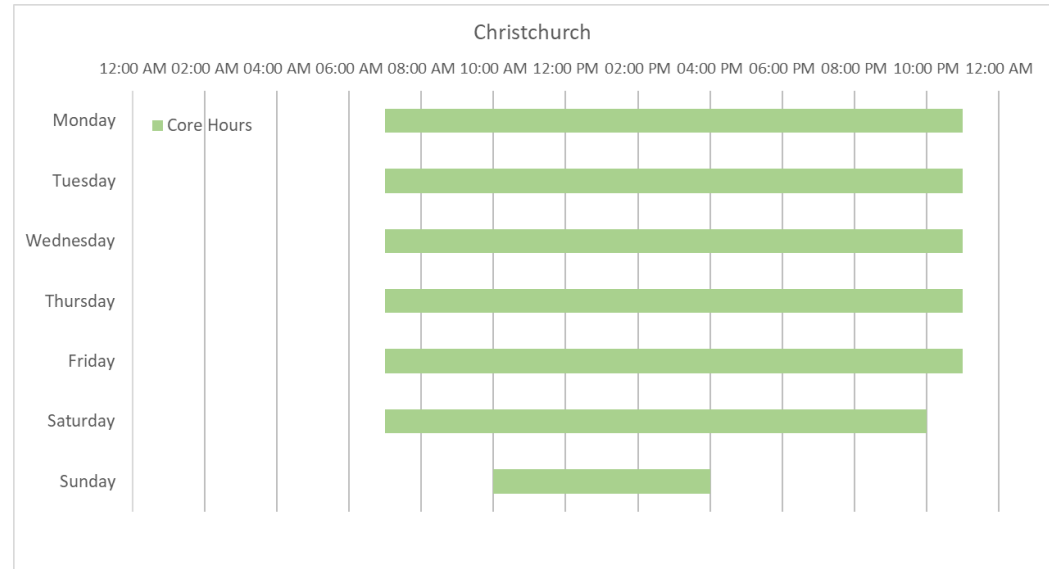


# Pharmacy Opening Times

## Access to the essential services (core plus supplementary opening hours)

- 1 pharmacy is open 7 days a week
- 10 pharmacies are open on Monday to Saturday only
- 5 pharmacies are open Monday to Friday only
- 1 pharmacy is open before 8 a.m. every day from Monday to Friday
- 1 pharmacy is open until after 6.30 p.m. every day from Monday to Friday

The chart shows the earliest opening hours and the latest closing hours for the Christchurch area. All periods during the opening hours are covered by core hours.



# Access to Services

## **Access to Medicines Use Review (MUR)**

Based on data for the first 9 months of the 2021/22 financial year, 23 MURs were carried out in Christchurch. This is compared to 1,222 MURs in 2020/21 and 3,746 MURs in 2018/19.

## **Access to New Medicines Service (NMS)**

14 pharmacies in Christchurch had NMS accreditation as of May 2022. Over the first 9-month period of 2021/22, 1,864 NMSs were undertaken. This is compared to the whole of 2020/21 where a total of 1,835 NMSs were undertaken.

## **Access to the 'on demand availability of specialist medicines' enhanced service**

As of May 2022, no pharmacies in Christchurch provided the specialist medicines advanced service.

## **Access to dispensing of appliances**

Data for this were unavailable at the time of writing.

## **Influenza vaccination advanced service**

14 pharmacies in Christchurch delivered the influenza vaccination advanced service in 2021/22. A total of 11,692 vaccinations were given according to the NHSBSA's Advanced Flu Vaccination Service report dataset during the 2021/22 flu season in Christchurch locality pharmacies matched with the Dorset STP influenza report pharmacies.

## **Stoma appliance customisation advanced service**

One pharmacy in Christchurch provided stoma customisation in 2021/22 (Rowlands Pharmacy, Purewell, Christchurch), with a total of 11 stoma customisations in the first 9 months of 2021/22. In comparison, in 2018/19 a total of 32 stoma customisations were performed.



# Access to Services

## **Appliance use review (AUR) advanced service**

There are no pharmacies in Christchurch that provide this service.

## **Other services (as of May 2022)**

- No pharmacies provided the Hepatitis-C Antibody Testing Service
- 9 pharmacies provided the Hypertension Case-Finding Service
- 10 pharmacies delivered the Urgent Repeat Medicines Service
- 2 pharmacies provided the Stop Smoking Service (Somerset Pharmacy, Somerset Road and The Grove Pharmacy, Fairmile Road)



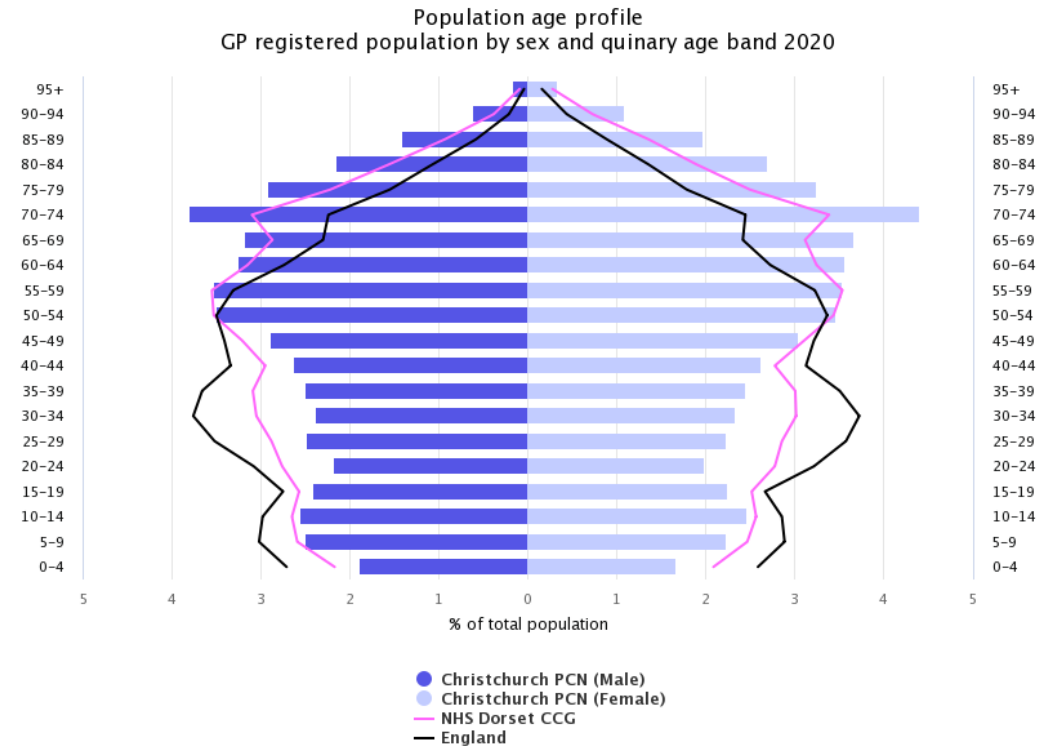


# Demographics

The population age profile shows that there are approximately 48,900 people registered at GP practices in Christchurch PCN (23,900 males and 25,000 females).

Compared to the Dorset ICS average, Christchurch has a higher proportion of people aged under 18 and a higher proportion of people aged 65 & over.

Christchurch PCN has a lower proportion of people aged 20 to 64 than both the Dorset ICS and national averages.



Source: National General Practice Profiles 2020



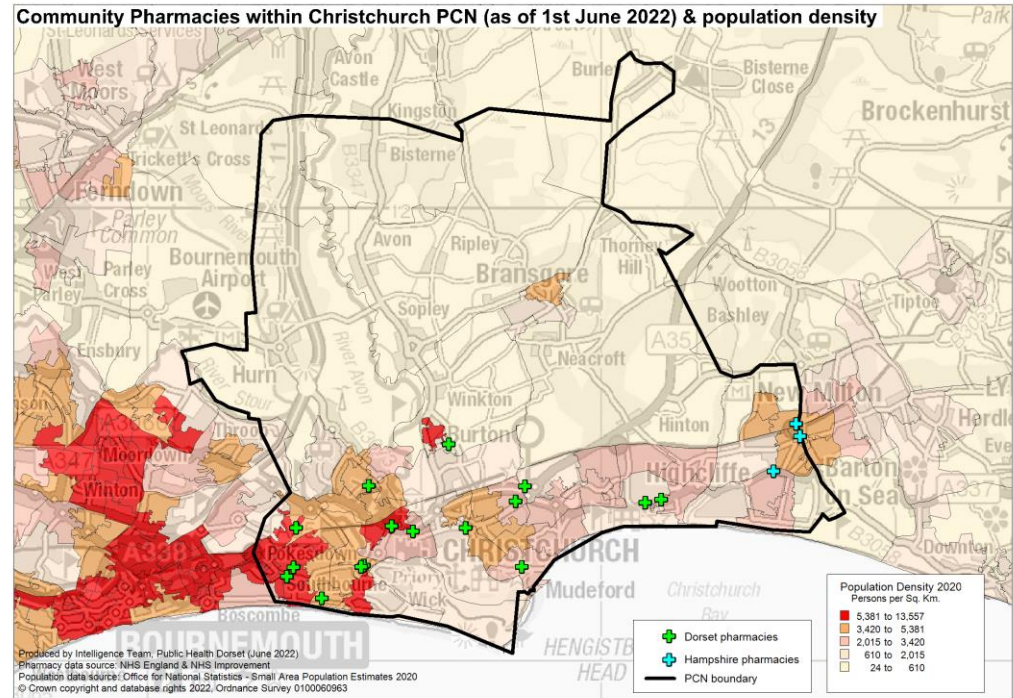
# Demographics

The area covered by the PCN is largely rural with the highest population density around Pokesdown, Burton and Southbourne.

Over the next 3 years from 2022-25 projections suggest the population of the BCP area overall will increase by 2.5 thousand (0.6%).

This growth is driven by increases in the population aged over 65, with the number of children and young people (aged 0-16) projected to decrease.

The number of over 65s is projected to increase by almost 3.8 thousand (4%) to 2025, compared to a small decrease of around 1.5 thousand of children and young people. The working age population is forecast to remain roughly unchanged. By 2025 those aged 65+ will account for 23% of the overall population.



# Housing

To understand any increases in demand for services based on planned housing developments, planning applications with consent to build to 2025 in BCP and 2026 in Dorset have been analysed. Postcodes (or the nearest existing postcode to the development site) have been matched to LSOAs and then PCN networks.

This gives a realistic picture of housing growth within the PCN. The net level of development for this PCN area is fairly low at approximately 954 dwellings. This is about 5% of the total net housing development for BCP and Dorset.

The main areas of proposed development in the PCN are in Christchurch Town Centre (204) particularly in the Priory area, and Mudeford, Stanpit and West Highcliffe (248) particularly in the Hoburne North area.



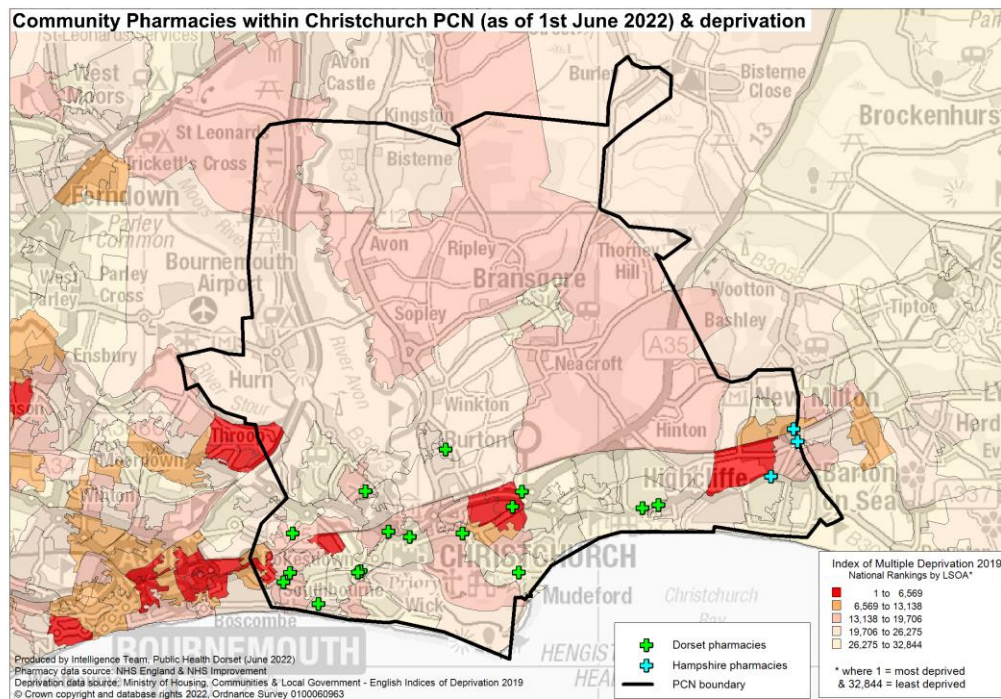
# Deprivation

Christchurch PCN area has an average IMD 2019 Score of 19.9.

The highest levels of deprivation in the Christchurch PCN area are found in the Somerford, Townsend and Pokesdown area.

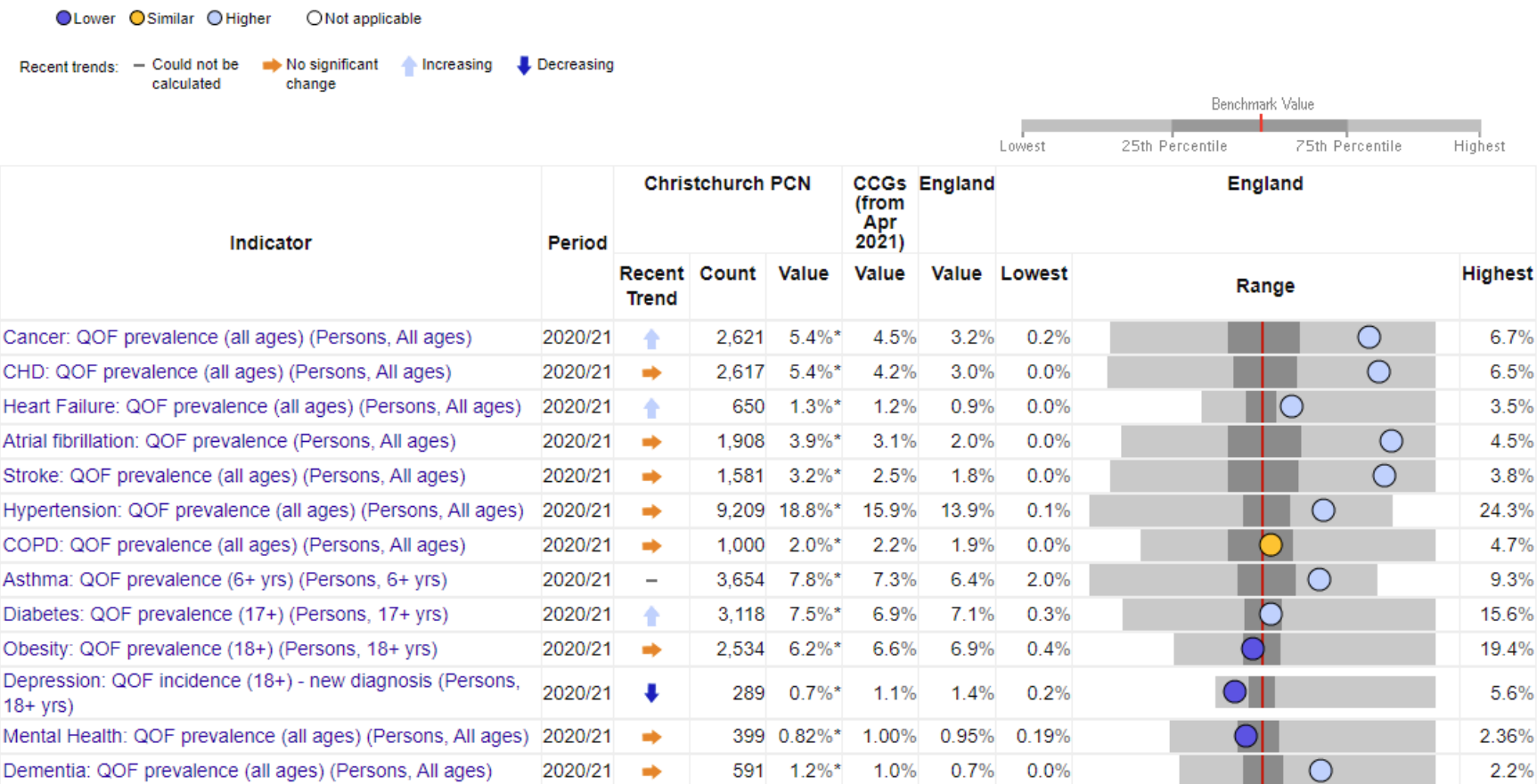
Five of the lower super output areas (LSOAs) in Christchurch PCN are amongst the worst 20% in England and a further three are amongst the 40% most deprived.

Despite this, 22 of the LSOAs that are covered by the PCN area are in the least deprived quintile.



# Health and Wider Determinants

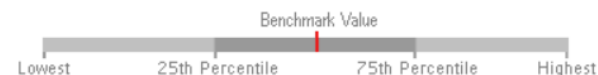
To understand the health needs and wider determinants of health in the PCN, the spine chart below visualises the data on a table of indicators and for each one it highlights whether the value is lower or higher benchmarked to national rates. The grey bar shows the range between the lowest or highest areas in England.



# Health and Wider Determinants

● Lower ● Similar ● Higher ○ Not applicable

Recent trends: — Could not be calculated → No significant change ↑ Increasing ↓ Decreasing



Indicator	Period	Christchurch PCN		CCGs (from Apr 2021)	England	England			
		Recent Trend	Count	Value	Value	Value	Lowest	Range	Highest
% reporting to be unemployed (Persons, 16+ yrs)	2021	→	21	3.0%*	3.4%	5.5%	0.0%		17.6%
% reporting to be in paid work or in full-time education (Persons, 16+ yrs)	2021	→	364	51.8%*	56.8%	61.8%	41.3%		95.0%
% with caring responsibility (Persons, 16+ yrs)	2021	→	149	21.1%*	19.9%	18.2%	1.0%		32.6%
% with a long-standing health condition (Persons, 16+ yrs)	2021	→	383	55.3%*	53.8%	51.1%	27.3%		73.9%
Estimated smoking prevalence (QOF) (Persons, 15+ yrs)	2020/21	→	5,337	12.6%*	15.2%	15.9%	5.0%		34.3%

Source: National General Practice Profiles, accessed 2022



# Health and Wider Determinants

Local Health provides evidence of inequalities within local areas aggregated to represent Christchurch PCN. The spine chart below visualises the data and for each indicator it highlights whether the value is significantly different to national rates using a 95% confidence interval.

